

THE COMMODORE PERRY REGIONAL TRAIL

A Multi-Municipal Collaboration



Township of Pine • Marshall Township • Borough of Bradford Woods
• Adams Township • Cranberry Township • Jackson Township

2017



PLANNERS IN ACTION

TOWNSHIP OF PINE

Larry Kurpakus, Director of Code Administration
and Land Development

MARSHALL TOWNSHIP

William Campbell, MTMSA Manager and
GIS Coordinator
Heather Cuyler, Recreation Program Director (*previous*)
Jessica Drozd, Recreation Program Director (*current*)
Nicole Hanson, Planning Director

BRADFORD WOODS BOROUGH

Natalie Thiess, Borough Manager
G. Jake Turner, Roads/Parks Superintendent

ADAMS TOWNSHIP

Gary Peaco, Code Enforcement Officer
Haley Geyer, Park Director

CRANBERRY TOWNSHIP

Ron Henshaw, Director of Planning and
Development Services
Chelsea Puff, Manager, Business and
Economic Development
Kathleen McCaig, Planning Specialist
Doug Cloutier, GIS Administrator

JACKSON TOWNSHIP

Chris Rearick, Township Manager/Planning Director
Ashley Hazlett, Office Administrator/Assistant Programmer

TOWNSHIP OF PINE BOARD OF SUPERVISORS

Michael J. Dennehy, Jr., Chairman
Philip D. Henry, Vice Chairman
Edward Holdcroft
Pasquale D. Avolio
Frank J. Spagnolo

PLANNING COMMISSION

Michael Hansen, Chairman
Joel Dennison, Vice Chairman
John Lombardo
Lauren R. Parker
Renee Evans
R. Jeffery McGeary
Garrin Welter

STAFF

Scott D. Anderson, Township Manager
Larry Kurpakus, Director of Code Administration and Land Development
Joni Patsko, Parks and Recreation Director

MARSHALL TOWNSHIP BOARD OF SUPERVISORS

Thomas Madigan, Chairman
Philip Troy, Vice Chairman
Jason Bragunier
Robert Edwards
Anthony Candek

PLANNING COMMISSION

Ron Baling, Chairman
Elaine Hatfield Vice Chairman
John Jester
Christopher Randall
Larry Payne
Patrick Esquino
David Pampena

STAFF

Neil D. McFadden, Township Manager
William Campbell, MTMSA Manager and GIS Coordinator
Heather Cuyler, Recreation Program Director (*previous*)
Jessica Drozd, Recreation Program Director (*current*)
Nicole Hanson, Planning Director

BRADFORD WOODS BOROUGH COUNCIL

Charles Coltharp, President
David Baldonieri, Vice President
Thomas Kosmala
Paula Hinston
Todd Hipwell
Roy Wiegand
Victoria Pongrace
Robert Murray, Mayor

PLANNING COMMISSION

Andrew Hutchinson, Chairman

STAFF

Natalie Thiess, Borough Manager
G. Jake Turner, Roads/Parks Superintendent

ADAMS TOWNSHIP BOARD OF SUPERVISORS

Donald C. Aiken, Chairman
Thomas L. Franceschina, Vice Chairman
Linda E. Lees
Edward L. Vogel
Russel R. Ford

PLANNING COMMISSION

Liz McMeekin
Robert Downie
Thomas L. Franceschina
Brett Schultz
Martin McKinney
Marilyn Watson
Steve Madeja

STAFF

Janet Lubbert, Secretary
Gary Peaco, Code Enforcement Officer
Haley Geyer, Park Director

CRANBERRY TOWNSHIP BOARD OF SUPERVISORS

Dick Hadley, Chairman
Mike Manipole, Vice Chairman
Bruce Hezlep
Bruce Mazzoni
John Skorupan

PLANNING ADVISORY COMMISSION

James Colella, Chairman
Susan Rusnak, Vice Chairman
Sharon Beck
William Thompson
John T. Morgan

STAFF

Jerry Andree, Township Manager
Bettelou Bertoncello, Assistant Township Manager, Administration
Duane McKee, Assistant Township Manager, Operations
Ron Henshaw, Director of Planning and Development Services
Chelsea Puff, Manager, Business and Economic Development
Doug Cloutier, GIS Administrator

JACKSON TOWNSHIP BOARD OF SUPERVISORS

Trent Geis, Chairman
Allan Osterwise, Vice Chairman
Jay Grinnell

PLANNING COMMISSION

Ed Komorosky, Chairman
Dennis Morgan
Jeff Barkley
George Hawthorne
Chris Duncan
Kurt Fowler
Marianne Hall

STAFF

Chris Rearick, Township Manager/Planning Director
Ashley Hazlett, Office Administrator/Assistant Programmer
Nikki Colton, Planner/Zoning Officer

INTRODUCTION	6
A REGIONAL VISION	9-14
THE COMMUNITIES	15-27
Township of Pine	16-17
Marshall Township	18-19
Borough of Bradford Woods	20-21
Adams Township	22-23
Cranberry Township	23-24
Jackson Township	25-26
NEXT STEPS	28-29
APPENDIX	30
Projects List	31-32
Maps	33-35
Resolutions	37-41



INTRODUCTION



Connecting Communities.

Effective regional planning addresses the needs of the present while looking toward the possibilities of the future. It is forward-thinking, innovative, and collaborative. It looks at the bigger picture, without being constrained by municipal borders or county boundaries.

The Township of Pine, Marshall Township, Borough of Bradford Woods, Adams Township, Cranberry Township, and Jackson Township, each are actively working to enhance and expand their sidewalk and trail networks. The intention behind these efforts is to create connections between people and key places - parks, schools, neighborhoods, and commercial areas.

With each municipality working on similar goals within their own borders, a task force, entitled “Planners in Action,” was formed in 2016 to facilitate the exchange of ideas and open lines of communication. Through those discussions, an idea was formed. An idea to plan together. To work together. To outline a vision for a regional active transportation network that, at the time, did not exist. By opening the lines of communication, and discussing the interests and shared goals of each municipality, a coordinated effort was undertaken to chart a path forward.

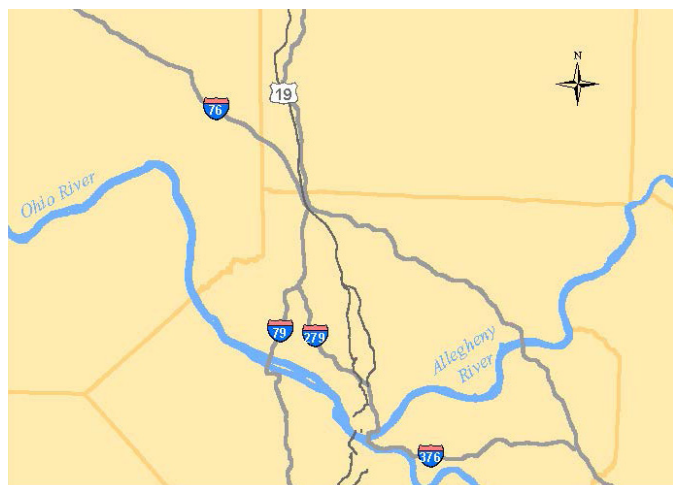
People. Places. Paths.

Western Pennsylvania is home to a variety of recreational amenities, including regionally significant trails such as the North Country Trail, Industrial Heartlands Trail, The Rachel Carson Trail, regional parks, and bodies of water. The participating municipalities provide exceptional community parks and recreational services to their residents. However, none of these amenities are connected, despite being in close proximity to each other.

The following plan highlights the existing sidewalk and trail networks of the Township of Pine, Marshall Township, Borough of Bradford Woods, Adams Township, Cranberry Township, and Jackson Township, and the links needed to create a regional route – a hybrid of sidewalks and trails – between them. This route will provide an immediate benefit to each community, by creating connections to local destinations. Over time, the successful implementation of this vision will create a network of sidewalks and trails that link to amenities, both local and regional, across Western Pennsylvania.

The Commodore Perry Regional Trail.

This new, inter-county and multi-municipal trail system is entitled the Commodore Perry Regional Trail (CPRT). The name serves as a remembrance of a prominent figure in the region and history of the United States Navy – Commodore Oliver Hazard Perry. Additionally, the path of the CPRT is primarily north-south, paralleling a major transportation corridor in Western Pennsylvania. This corridor, typically referred to as Route 19, is also known by another name – Perry Highway. Route 19 traverses through many of the Planner in Action communities, extending as far north as Erie, Pennsylvania



Perry Highway (Route 19) in Allegheny and Butler Counties



Perry Highway between Marshall and Pine Townships.

Commodore Oliver Hazard Perry is largely known for his critical role in the War of 1812. A lifelong military man, Perry was stationed at Presque Isle on Lake Erie at the beginning of the war. When he arrived at the Great Lakes, Perry was faced with the challenge of overcoming depleted resources, including ships, men, and weapons. In response, Perry promptly went about rebuilding the fleet and assembling a new naval unit.

In September of 1813, Perry and his crew took on the British in the Battle of Lake Erie. Their victory marked a turning point in the war for the United States, and earned Perry the title “The Hero of Lake Erie.”






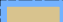
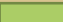



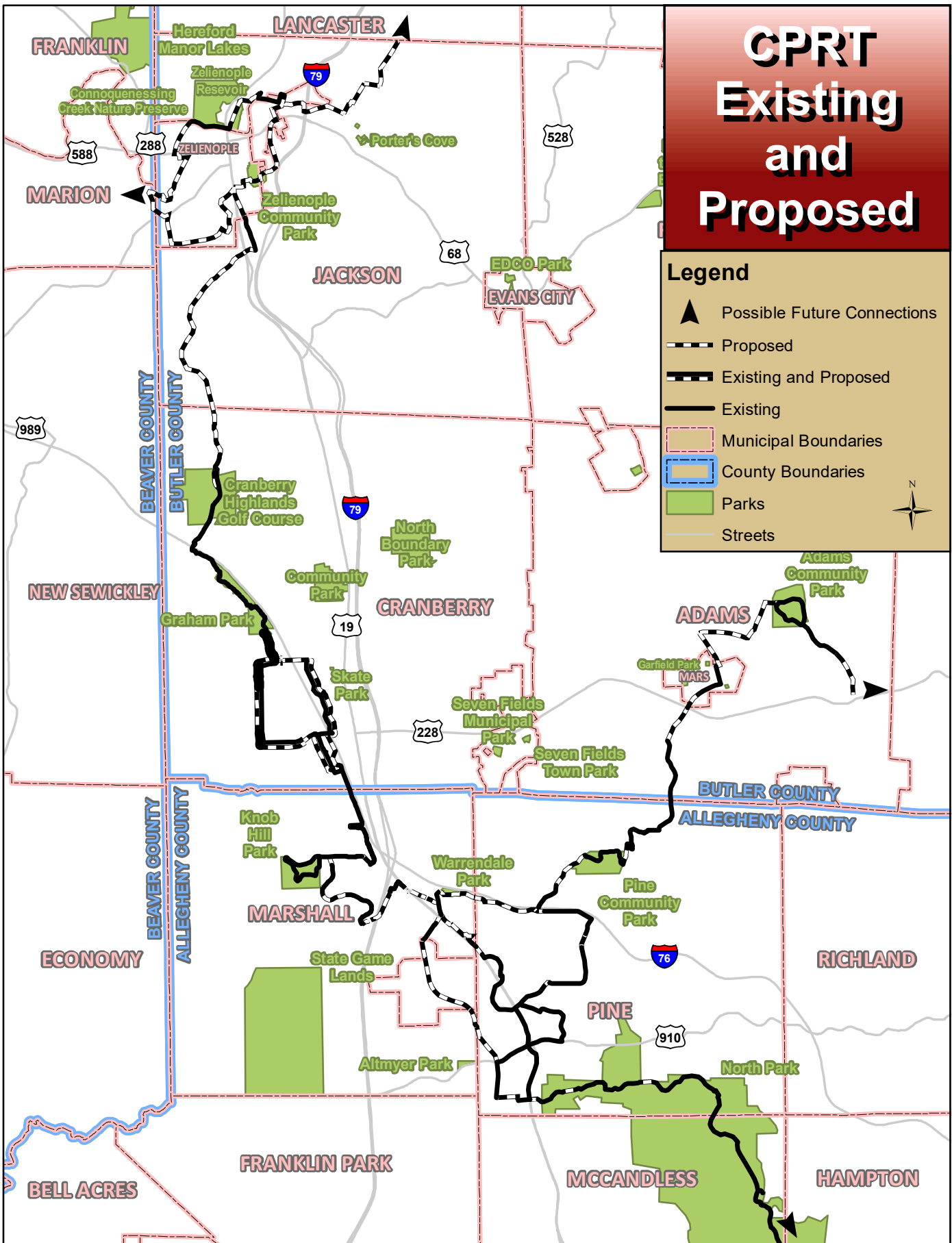


A REGIONAL VISION

CPRT Existing and Proposed

Legend

-  Possible Future Connections
-  Proposed
-  Existing and Proposed
-  Existing
-  Municipal Boundaries
-  County Boundaries
-  Parks
-  Streets



The Commodore Perry Regional Trail (CPRT) Master Plan will advance the development of a more complete and connected active transportation network within the region. The trail spans between two counties in Western Pennsylvania - Allegheny County and Butler County. The route crosses the municipal boundaries of Jackson Township, Cranberry Township, Adams Township, the Borough of Bradford Woods, Marshall Township, and the Township of Pine.

When completed, The Commodore Perry Regional Trail will be over 50 miles in length. This route will consist of trails, sidewalks, and in-road facilities such as pedestrian lanes, sharrows, and bike lanes. The CPRT will serve as a spine for ancillary sidewalks, trails, and bikeways, to connect to. The secondary trail system outlined in this master plan exceeds 33 miles in length, with potential expansion opportunities in the future. To the greatest extent possible, The Commodore Perry Trail will maximize the use of existing infrastructure, in order to accelerate the development of an interconnected corridor in a smart and efficient manner.

The Commodore Perry Regional Trail highlights the exceptional community parks found in the participating municipalities. The CPRT trail system connects five municipal parks, with a total of 740 acres of local, community green space. Through the development of this trail, Adams Community Park, Graham Park, Knob Hill Park, Pine Community Park, and Zelienople Community Park will all be linked together. Access by foot or bike to commercial nodes within each community, such as downtown Zelienople, Freedom Square, and the Village at Pine, will also be possible when the gaps along The Commodore Perry Regional Trail are filled.

The Commodore Perry Regional Trail will create an opportunity to access regionally significant amenities, including Brush Creek, the North Park's 3,000 acres of open space, and the Rachel Carson Trail, totaling 34 miles in length.



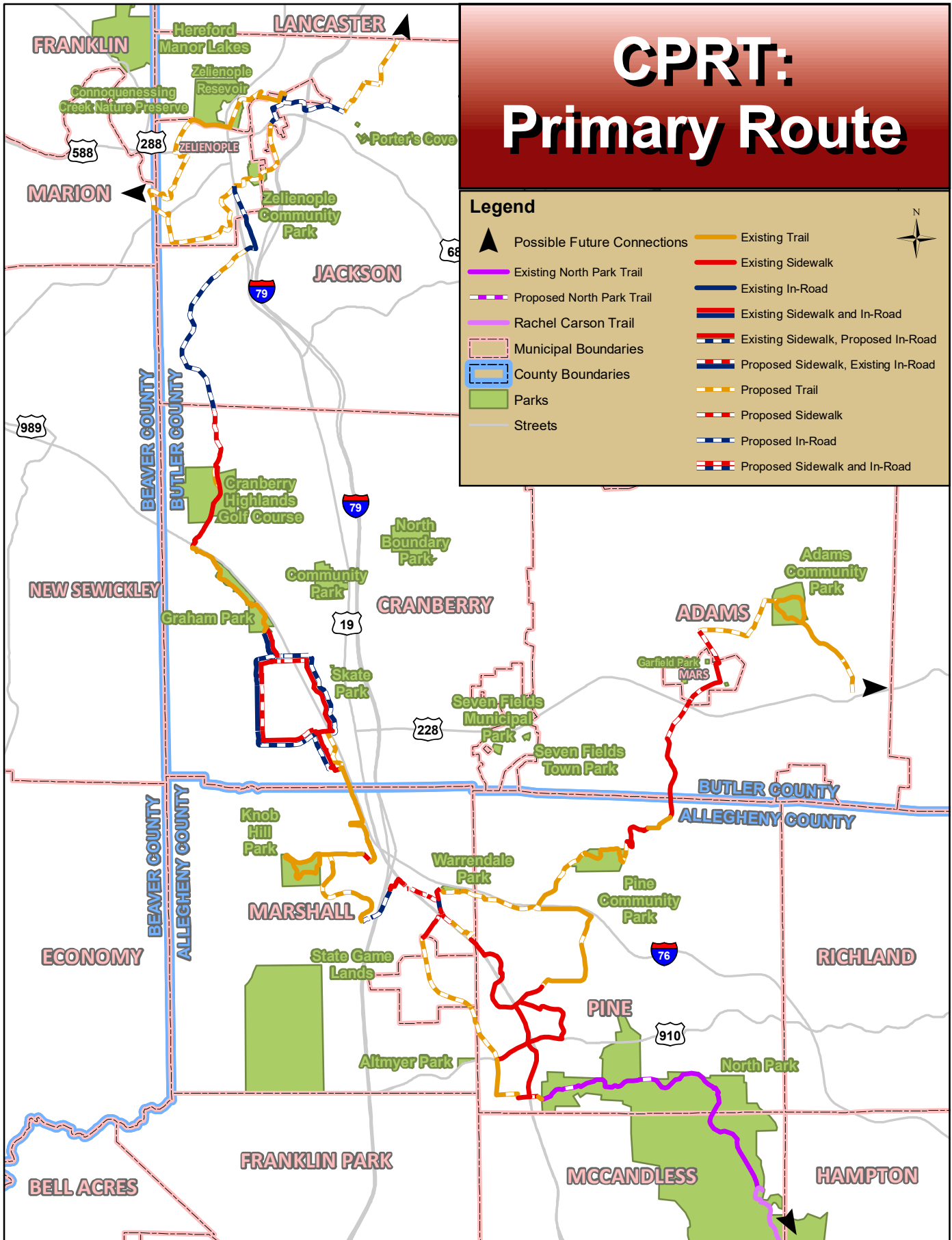
THE COMMODORE PERRY REGIONAL TRAIL (CPRT)

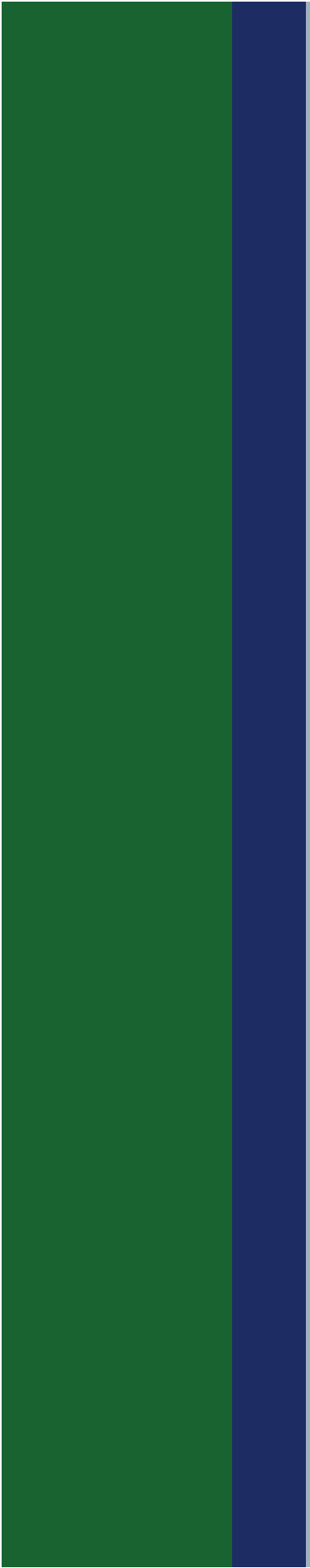
- *52 miles of trail*
- *3,815 acres of green space*

CPRT: Primary Route

Legend

- ▲ Possible Future Connections
- Existing North Park Trail
- Proposed North Park Trail
- Rachel Carson Trail
- Municipal Boundaries
- County Boundaries
- Parks
- Streets
- Existing Trail
- Existing Sidewalk
- Existing In-Road
- Existing Sidewalk and In-Road
- Existing Sidewalk, Proposed In-Road
- Proposed Sidewalk, Existing In-Road
- Proposed Trail
- Proposed Sidewalk
- Proposed In-Road
- Proposed Sidewalk and In-Road





The projects outlined in this plan are divided into two categories. The Commodore Perry Regional Trail will serve as the major spine, or primary network, that connects the communities and their recreational amenities with each other. The CPRT includes existing trails and sidewalks, as well as “missing links,” or proposed projects. These future projects range from trails and sidewalks to in-road facilities such as bike lanes and paved shoulders (See the Appendix for additional information). As this plan is implemented, constructing projects along the primary route, the CPRT, will be the main focus for the municipalities.

In order to prioritize those trails, sidewalks, and bike lanes, each municipality outlined the challenges and opportunities associated with each project. Each community brought forth the goals and objectives for active transportation in their respective municipalities, as identified in current plans, policies, outreach initiatives, and programs. Projects that could fill in gaps along the CPRT, such as current township projects and upcoming developments, were analyzed. This comprehensive approach seeks to harness the ongoing development in the region, and combines it with strategic, community-initiated trail improvements, to efficiently construct the CPRT.

A secondary network of routes that extend outward from the CPRT are also outlined in this plan. The development of a series of shorter paths ancillary to the CPRT will help additional neighborhoods and commercial areas become connected to the regional trail network.

The regular implementation of the projects outlined in this plan will result in the creation of a regionally significant trail network, where none currently exists. In the future, as components of the CPRT are constructed, it will be critical for the participating municipalities to continually communicate about project implementation. Projects built in one municipality, may impact the prioritization of projects in neighboring townships.

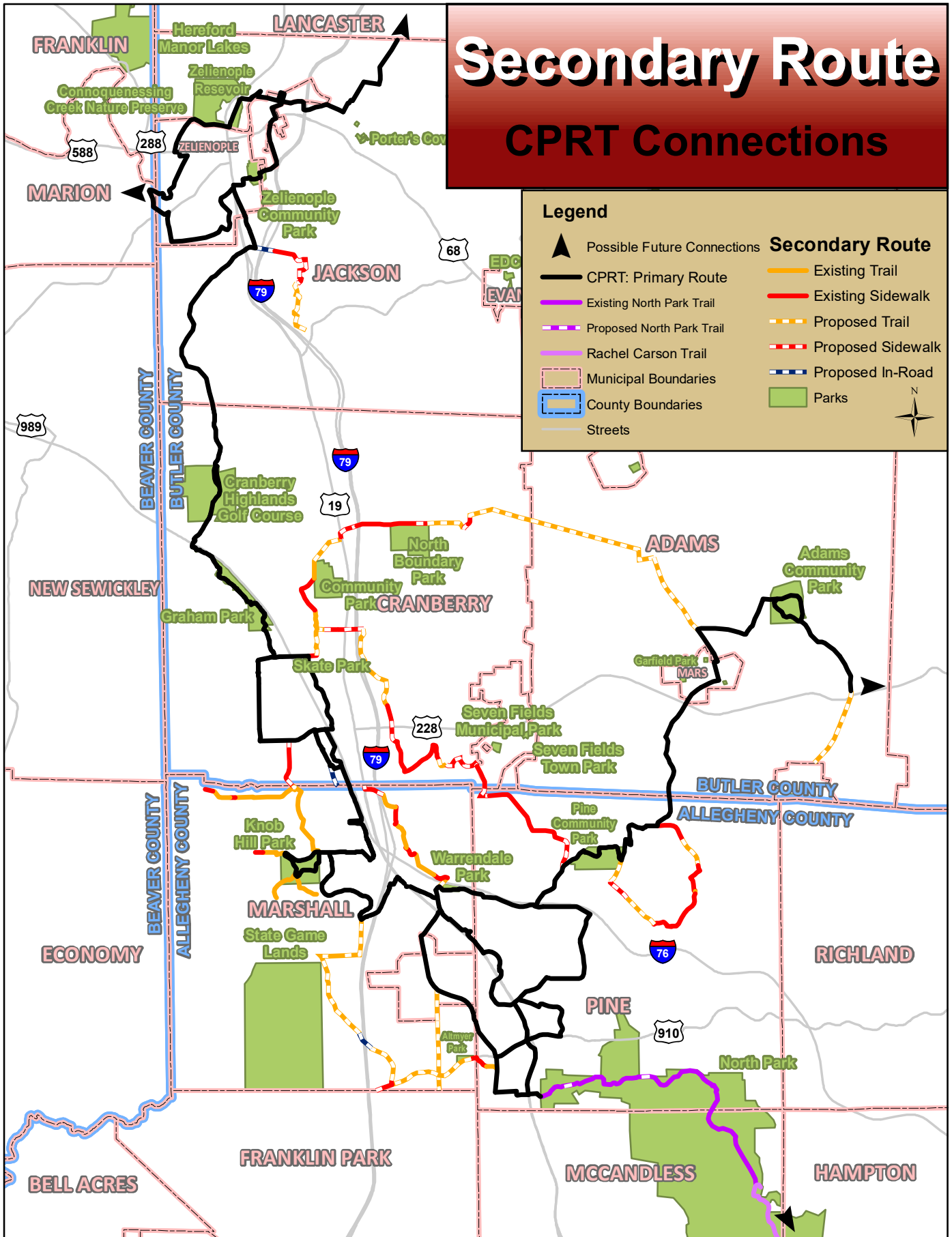
Implementing this plan will result in complete streets that allow people to walk or bike to shops, restaurants, schools, and offices without the use of a car. People will be able to access local and regional destinations for the purposes of recreation. Each community’s existing sidewalk, trail, and bikeway networks will improve and expand, creating connections across municipal boundaries and county borders, and ultimately, providing better access to locally and regionally significant amenities.

Secondary Route

CPRT Connections

Legend

- ▲ Possible Future Connections
 - CPRT: Primary Route
 - Existing North Park Trail
 - Proposed North Park Trail
 - Rachel Carson Trail
 - ▭ Municipal Boundaries
 - ▭ County Boundaries
 - Streets
- ### Secondary Route
- Existing Trail
 - Existing Sidewalk
 - Proposed Trail
 - Proposed Sidewalk
 - Proposed In-Road
 - ▭ Parks





THE COMMUNITIES

Township of Pine, Allegheny County



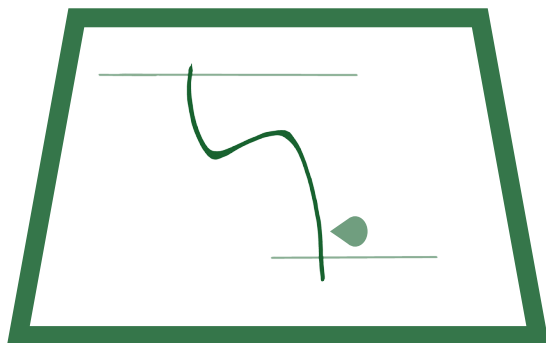
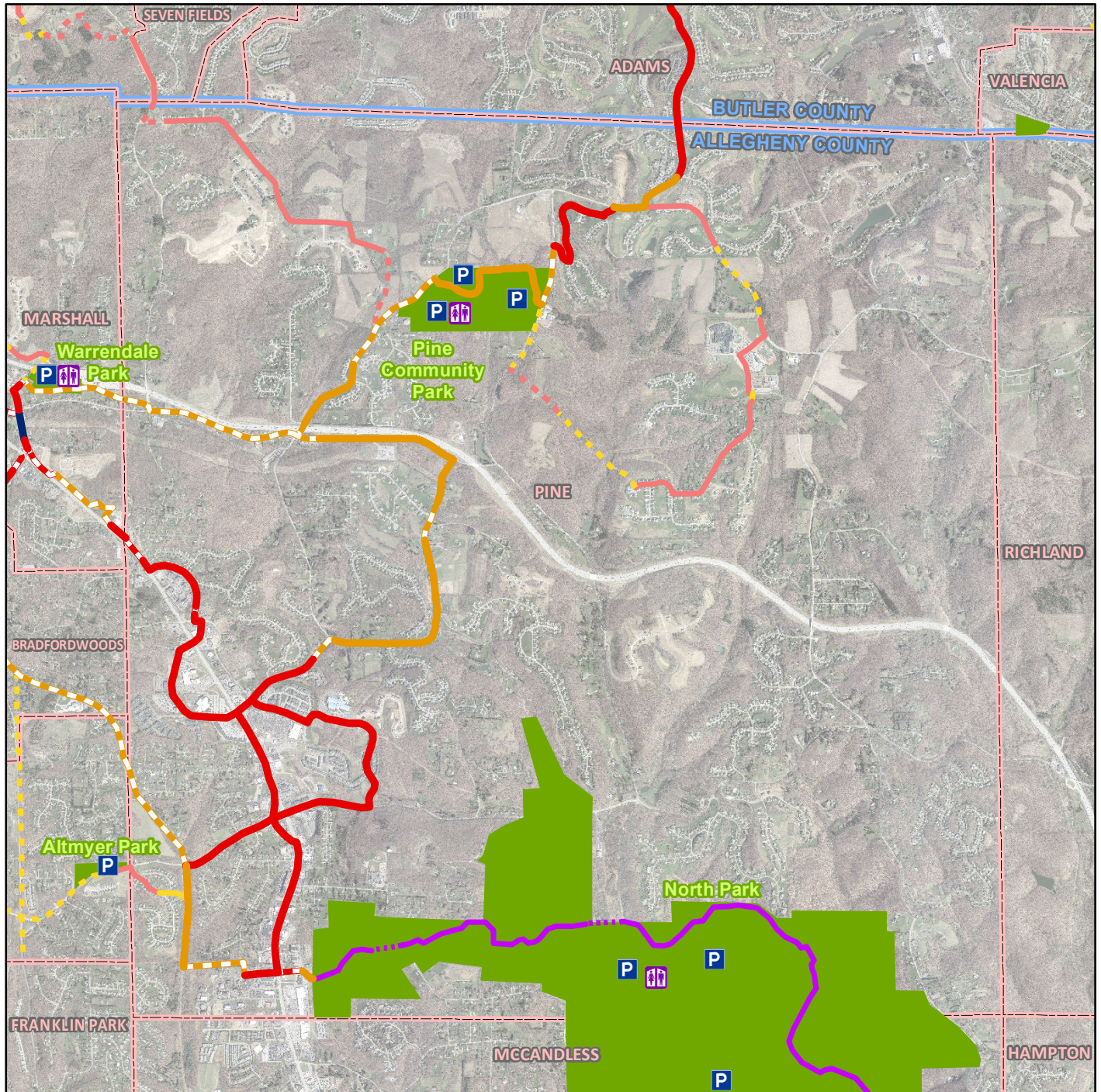
The Township of Pine, located in Allegheny County, is called home by 12,937 residents. The Township has variety of recreational, residential, and commercial destinations, including the Village at Pine, the Pine Community Park and Municipal Center, the Treesdale Golf and Country Club, schools, and neighborhoods.

In 2005, the Township adopted the Trail Feasibility Study, in support of growing the municipality’s trail system. In order to continue planning for the community’s future, the Township of Pine developed and adopted the Implementable Comprehensive Plan and Comprehensive Parks, Recreation, and Open Space Plan in 2016. That plan emphasizes that “the Township of Pine supports and encourages human-powered transportation; affords residents opportunities for recreation and fitness activities; and creates connections between key locations within and beyond the township by providing safe routes for walkers and cyclists.”

By filling in the gaps in its sidewalk and trail network along the Commodore Perry Regional Trail, the Township of Pine will develop a robust pedestrian corridor that provides access to Pine Community Park. The Township’s proximity to North Park will also provide access to a regional recreation destination for all the municipalities linked together by the Commodore Perry Regional Trail.

- CPRT**
9.7 miles of completed
sidewalks and trails
- 3.4 miles of new
sidewalks and trails
- SECONDARY**
3.4 miles of completed
sidewalks and trails
- 2.2 miles of new
sidewalks and trails

TOWNSHIP OF PINE



Legend

- Parking - year round
- Parking - seasonal

CPRT: Primary Route

- Existing Trail
- Existing Sidewalk
- Existing In-Road
- Existing Sidewalk, Proposed In-Road
- Proposed Sidewalk, Existing In-Road
- Proposed Trail
- Proposed Sidewalk
- Proposed In-Road
- Proposed Sidewalk and In-Road



- Restroom - year round
- Restroom - seasonal
- Parks
- Municipal Boundaries
- County Boundaries
- Existing North Park Trail
- Proposed North Park Trail

Secondary Route

- Existing, Sidewalk
- Existing, Trail
- Proposed, Sidewalk
- Proposed, Trail
- Proposed, In-Road

Marshall Township, Allegheny County



Marshall Township, located in Allegheny County, is called home by 8,823 residents. The community has a variety recreational destinations including the Brush Creek Trail, Knob Hill Park, Warrendale Park, and the State Game Lands. The community has a growing sidewalk and trail network due to new development and the implementation of capital projects.

In 2009, the Township adopted its Comprehensive Recreation, Parks, and Open Space Plan. That plan highlights the importance of continuing to explore multi-municipal opportunities for parks and recreation, continuing to expand the Township's trail system, as well as establishing a pedestrian network throughout the Township, and exploring the feasibility of adding bike lanes to Township roads.

The development of The Commodore Perry Regional Trail aligns with those goals. Marshall Township's recreation amenities, commercial nodes, and residential areas will become more connected and accessible as the sidewalks and trails along The Commodore Perry Regional Trail system are constructed.

CPRT

**5.2 miles of completed
sidewalks, trails, and
in-road facilities**

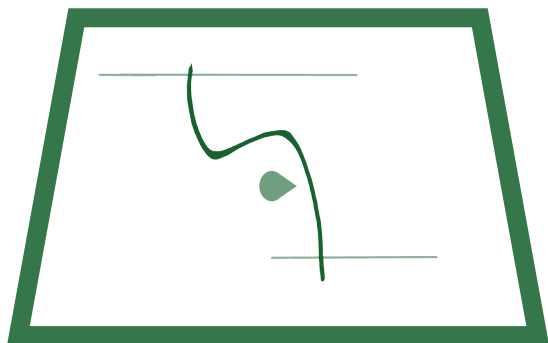
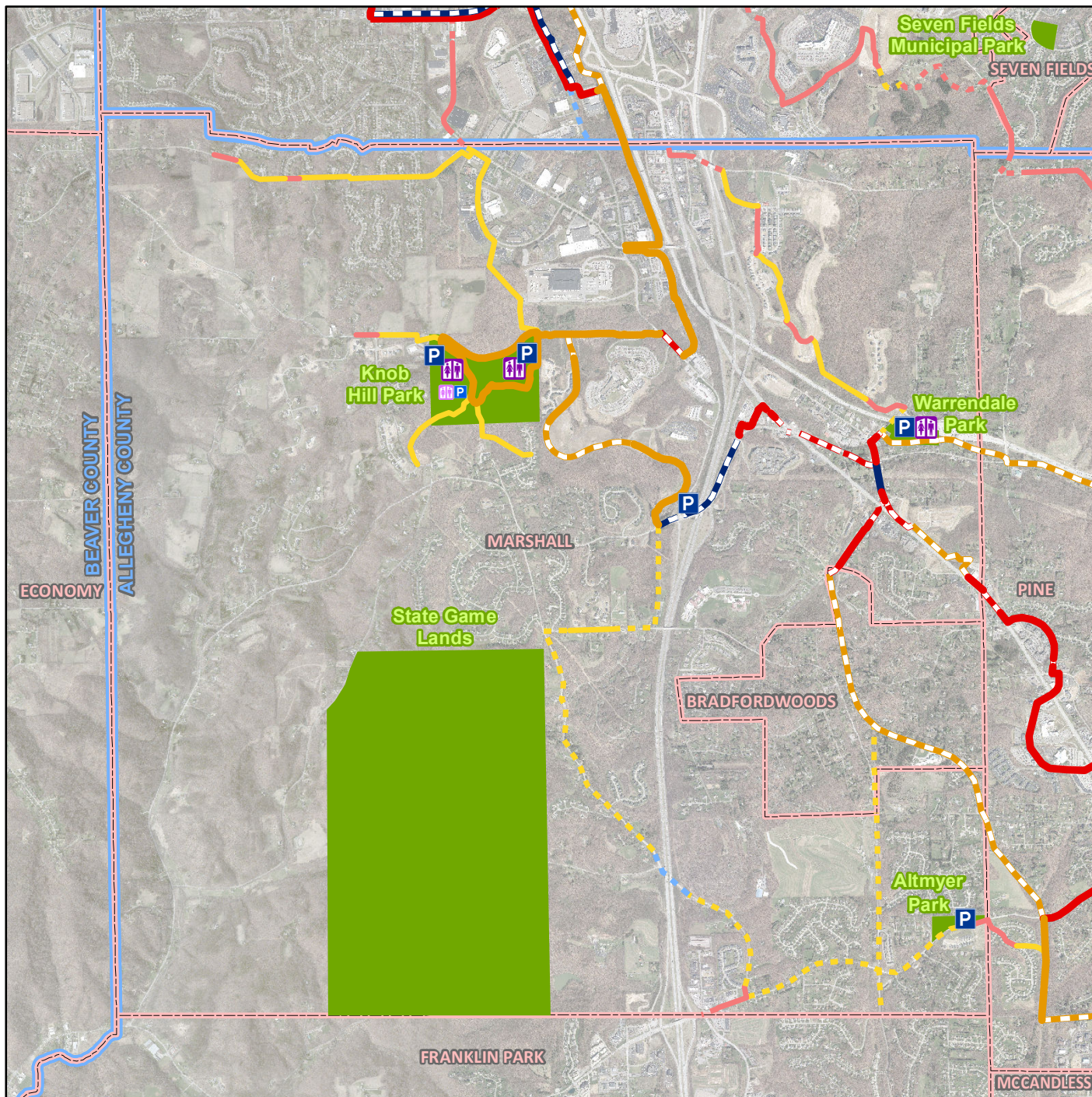
**3.6 miles of new
sidewalks, trails, and in-
road facilities**

SECONDARY

**5.8 miles of completed
sidewalks, trails, and in-
road facilities**

**5.4 miles of new
sidewalks, trails, and in-
road facilities**

MARSHALL TOWNSHIP



Legend			
	Parking - year round		Restroom - year round
	Parking - seasonal		Restroom - seasonal
CPRT: Primary Route			
	Existing Trail		Parks
	Existing Sidewalk		Municipal Boundaries
	Existing In-Road		County Boundaries
	Existing Sidewalk, Proposed In-Road		Existing North Park Trail
	Proposed Sidewalk, Existing In-Road		Proposed North Park Trail
	Proposed Trail	Secondary Route	
	Proposed Sidewalk		Existing, Sidewalk
	Proposed In-Road		Existing, Trail
	Proposed Sidewalk and In-Road		Proposed, Sidewalk
			Proposed, Trail
			Proposed, In-Road

Borough of Bradford Woods, Allegheny County



Bradford Woods Borough, located in Allegheny County, is home to 1,171 residents. The Borough is nestled in Marshall Township with Pine Township sharing one of its borders. It is a small Borough, a little under a square mile of land area. The Borough has a nature reserve (Reserve, protected by the Allegheny Land Trust) as well as a nature trail (Lake Loop Trail).

In 2017, the Borough adopted its Comprehensive Plan which highlights the importance of walk-ability in the Borough. The Borough has a dedication to nature and leaving environments at their natural state as much as possible, as well as enjoying nature in its fullest. In expanding the Borough's trail system, it will allow residents, as well as trail hikers, greater experience enjoying nature.

The development of The Commodore Perry Regional Trail aligns with the Borough's adherence to nature, as well as connecting to other municipalities through walking trails. The Borough's location in relation to North Park will increase access to a county park destination for residents to walk and take pleasure in the trails of North Park.

CPRT

**0 miles of completed
sidewalks and trails.**

**.96 miles of new
sidewalks and trails.**

SECONDARY

**0 miles of completed
sidewalks and trails.**

**.4 miles of new
sidewalks and trails.**

Adams Township, Butler County



Adams Township, located in Butler County, is called home by 13,546 residents. The Township has a variety of destinations that would benefit from enhanced pedestrian connections. From the Adams Township Community Park and Municipal Building, to neighborhoods, commercial areas, and schools like the Mars Area Elementary, Middle, and High Schools, locations abound for people to walk to.

The development of the sidewalk and trail projects within Adams Township and along The Commodore Perry Regional Trail will enhance the walkability of the community, and provide opportunities to walk as a form of transportation or recreation.

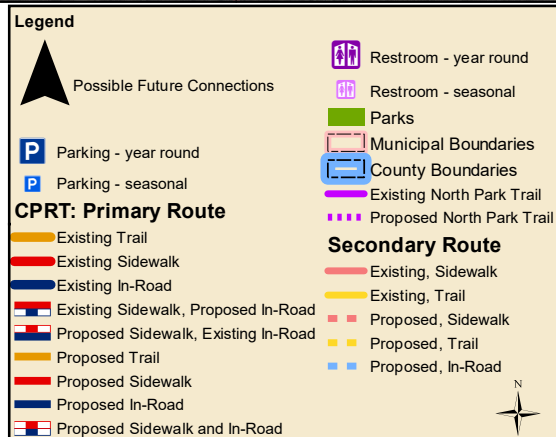
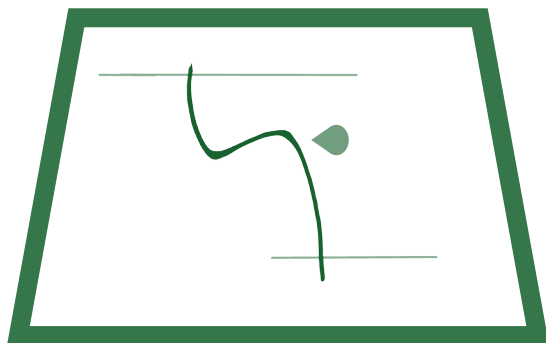
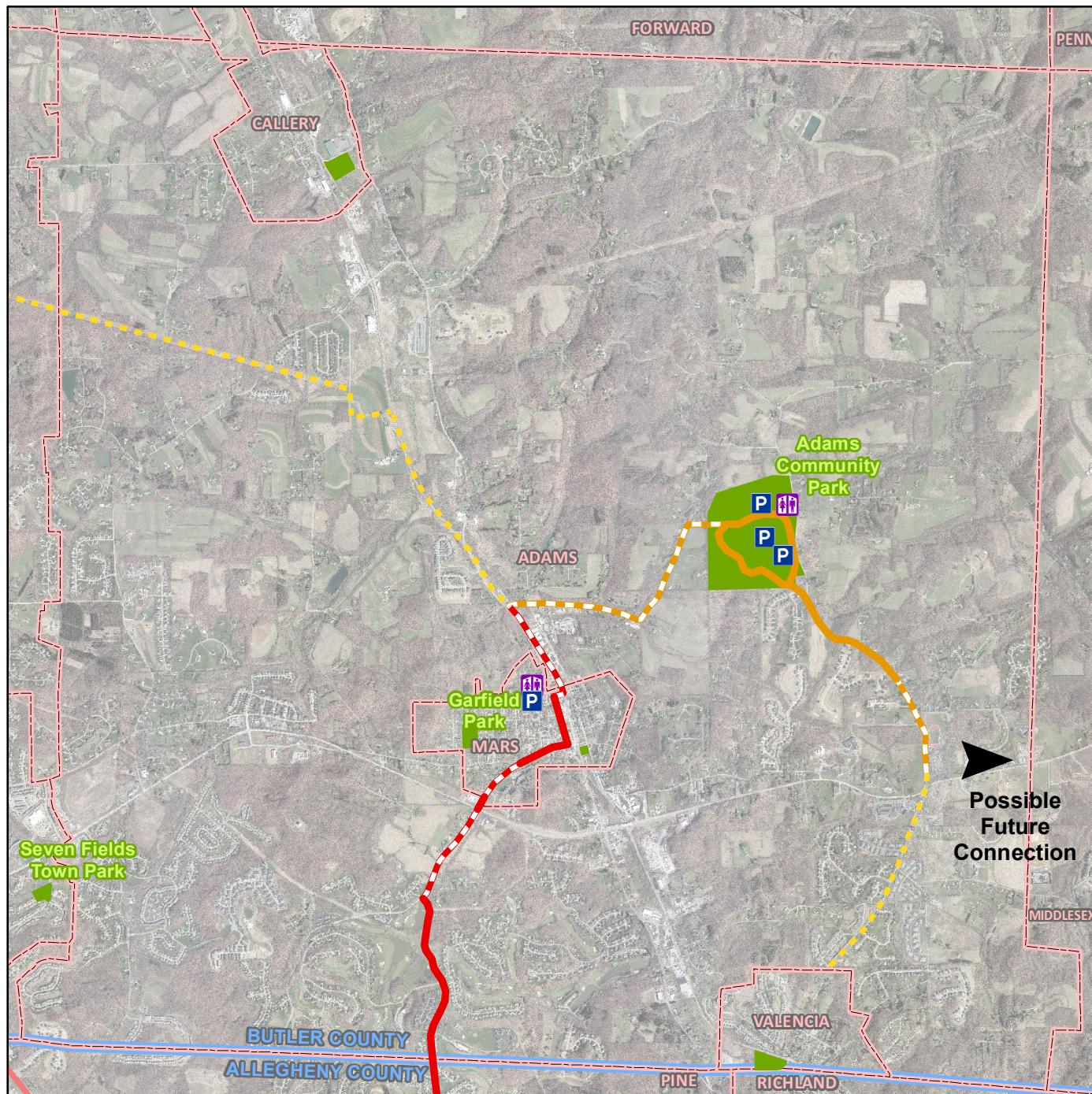
The Commodore Perry Regional Trail system also provides an opportunity to create future connections to areas east of Adams Township. As new transportation and development projects trail or sidewalk projects have the ability to link people to key destinations in Adams Township, Middlesex Township, and along the Route 228 corridor, including recreational destinations, schools, commercial areas, and neighborhoods.

CPRT
2.8 miles of completed
sidewalks and trails

2.8 miles of new
sidewalks and trails

SECONDARY
4.0 miles of new sidewalks
and trails

ADAMS TOWNSHIP



Cranberry Township, Butler County



Cranberry Township, located in Butler County, is home to 30,739 residents and 24,000 jobs. The Township has a range of residential, recreational, and commercial destinations, including Graham Park, the Cranberry Highlands Golf Course, Community Park, the Municipal Center, North Boundary Park, Haine Elementary and Middle School, Rowan Elementary School, Freedom Square, Cranberry Springs, and Cranberry Mall.

An interconnected network of sidewalks, trails, and bikeways is a high priority for the Township. Previous planning efforts, including the development of The Cranberry Plan (2009), The Bicyclist and Pedestrian Connections Plan (2011), The Comprehensive Recreation and Open Space Plan (2012), and The Cranberry Plan Update (2016), all emphasize the importance of providing mobility options for residents and businesses. Key goals outlined in those plans include developing pedestrian connections between neighborhoods, creating routes between Graham Park, Community Park, North Boundary Park, and the surrounding neighborhoods, building additional trails, and providing access to key commercial areas.

By filling in the gaps in its sidewalk, trail, and bikeway network along the Commodore Perry Regional Trail, Cranberry Township will support the objectives outlined in these plans while providing access to local amenities through the development of multimodal corridors. As the CPRT is constructed, consideration should be given to providing amenities that enhance the trail, such as signage, landscaping, bike racks, and benches.

CPRT

**7.7 miles of completed
sidewalks, trails,
and in-road facilities**

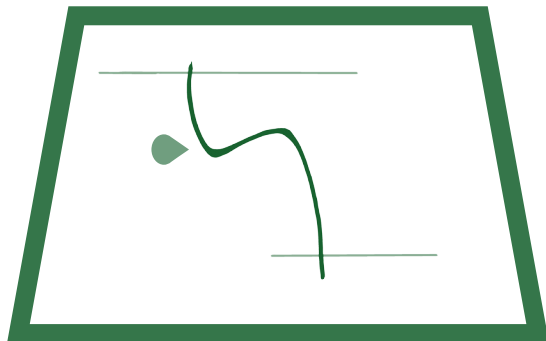
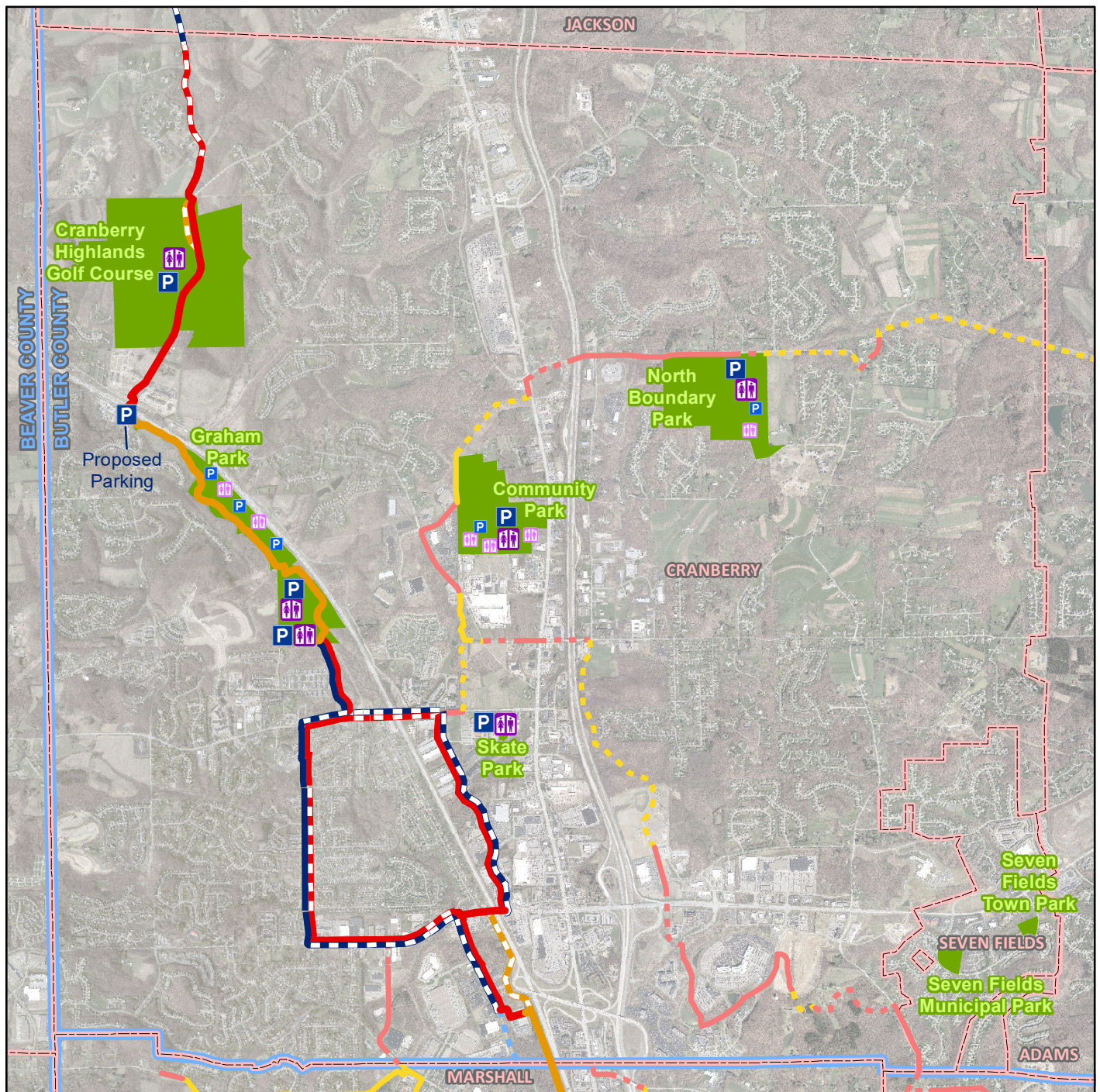
**5.1 miles of new
sidewalks, trails,
and in-road facilities**

SECONDARY

**4.3 miles of completed
sidewalks, trails,
and in-road facilities**

**6.1 miles of new
sidewalks, trails,
and in-road facilities**

CRANBERRY TOWNSHIP



Legend

	Parking - year round			Restroom - year round
	Parking - seasonal			Restroom - seasonal
CPRT: Primary Route				
	Existing Trail			Parks
	Existing Sidewalk			Municipal Boundaries
	Existing In-Road			County Boundaries
	Existing Sidewalk and In-Road		Secondary Route	
	Existing Sidewalk, Proposed In-Road			Existing, Sidewalk
	Proposed Sidewalk, Existing In-Road			Existing, Trail
	Proposed Trail			Proposed, Sidewalk
	Proposed Sidewalk			Proposed, Trail
	Proposed In-Road			Proposed, In-Road
	Proposed Sidewalk and In-Road			

Jackson Township, Butler County



Jackson Township, located in Butler County, is called home by 3,808 residents. Since 2014, the Township has, and is expected to continue growing, at an average rate of 70 or more homes per year. The Jackson Township, and neighborings Zelienople Borough and Harmony Borough, have a variety of existing and planned destinations that will benefit from enhanced pedestrian connections.

From the historical downtown of Harmony, the Connoquenessing Creek, and Scholars Run, to Seneca Valley High School, downtown Zelienople, and the Route 528 Park and Ride, the areas abounds with destinations that the construction of sidewalks and trails would provide access to. Linking to areas such as Porter’s Cove and the Zelienople Reservoir will further connect people to recreational opportunities in the area, including kayaking and canoeing.

Jackson Township’s Comprehensive Plan and Comprehensive Parks, Recreation, and Open Space Plan outlines the importance of developing regional trail connections. The development of sidewalk and trail projects within Jackson Township and along The Commodore Perry Regional Trail system will strengthen the local active transportation network, while providing additional mobility options for residents and visitors alike. 5.8 miles of new trails and bikeways in Zelienople Borough and Harmony Borough will connect the CPRT to the Connoquenessing Creek Nature Preserve and the Zelienople Community Park.

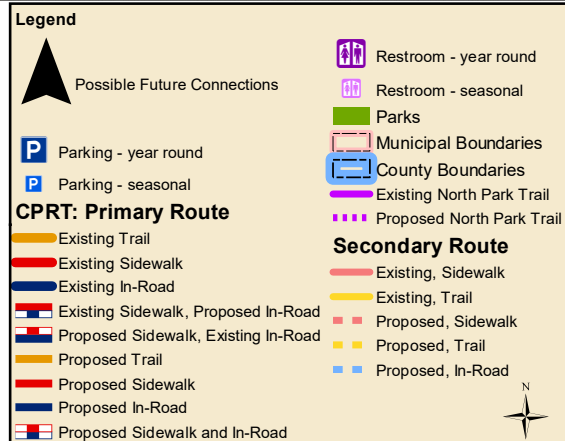
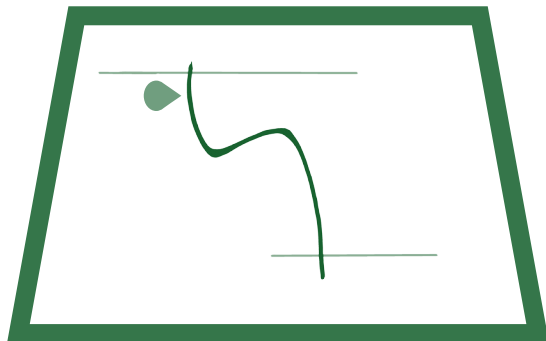
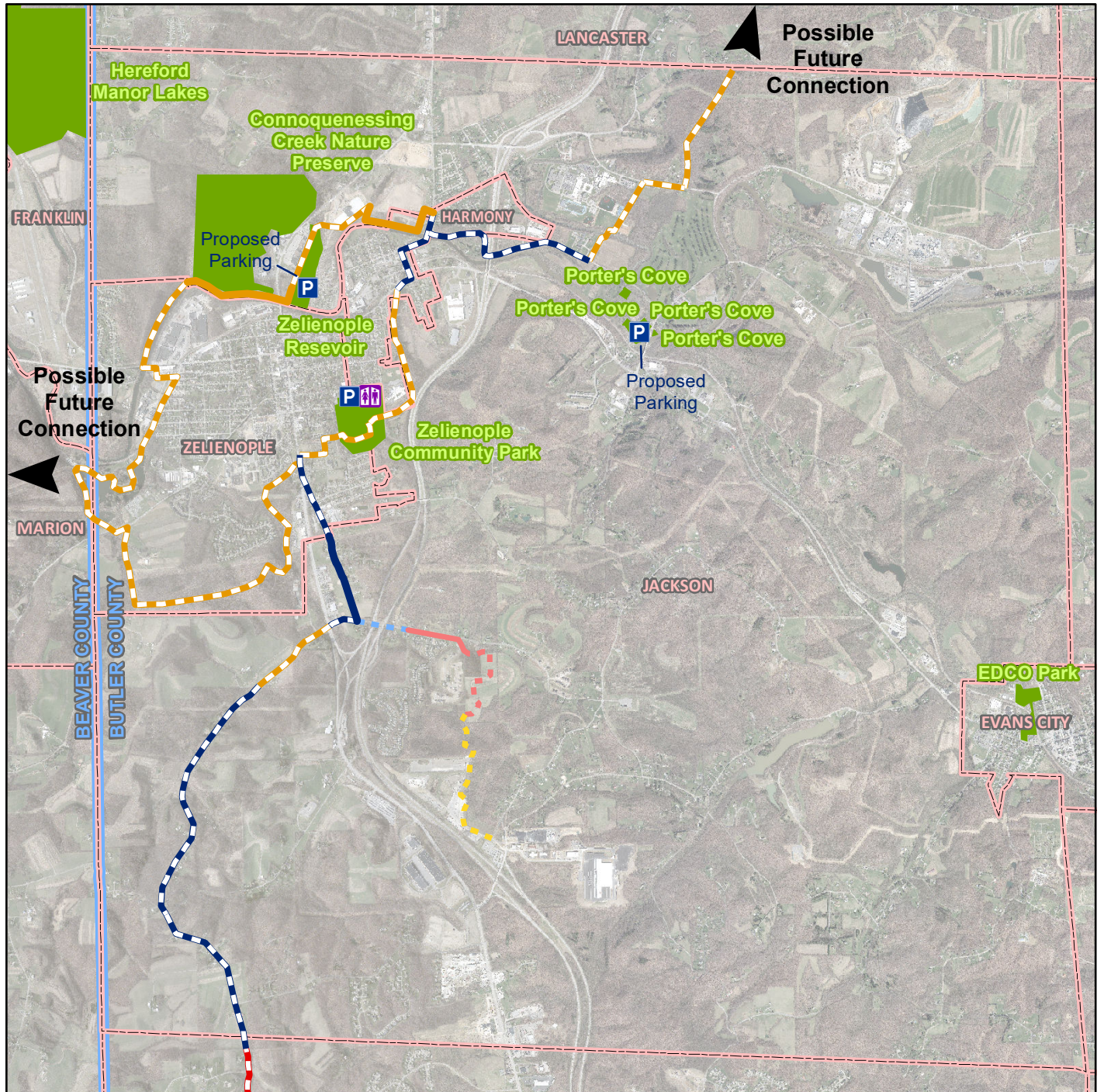
CPRT
1.1 miles of completed
sidewalks, trails,
and in-road facilities

6.2 miles of new
sidewalks, trails,
and in-road facilities

SECONDARY
.3 miles of completed
sidewalks, trails,
and in-road facilities

1.6 miles of new
sidewalks, trails,
and in-road facilities

JACKSON TOWNSHIP





NEXT STEPS



Conclusion.

The Commodore Perry Regional Trail Master Plan is long-range in nature and far reaching in scope. The implementation of this plan, and the subsequent construction of the gaps highlighted along the trail system, will strengthen the active transportation networks in each community and the region as a whole. As the sidewalks, trails, in-road facilities, and bikeways outlined in this plan are strategically constructed, each municipality will see an immediate benefit, with people becoming increasingly connected to local recreational, commercial, and residential destinations

This plan outlines a path forward, towards creating a regional network that efficiently maximizes the use of existing infrastructure, while proposing new projects that, when constructed, will fill in key missing links to create a continuous trail system.

While this plan centers on several neighboring municipalities, opportunities to collaborate with additional, supportive communities, non-profits, and other entities to enhance and expand The Commodore Perry Regional Trail would be welcomed. Continuing to communicate, collaborate, and design with each other will be an important component to developing a high-quality active transportation network for each community, their residents, and the region at large.

Over time, by consistently and methodically implementing the projects outlined in this plan, the vision of The Commodore Perry Regional Trail will be realized. People will be connected to places. Neighbors will be connected to neighbors. Access to regional amenities that once seemed impractical, will in time, become a reality.



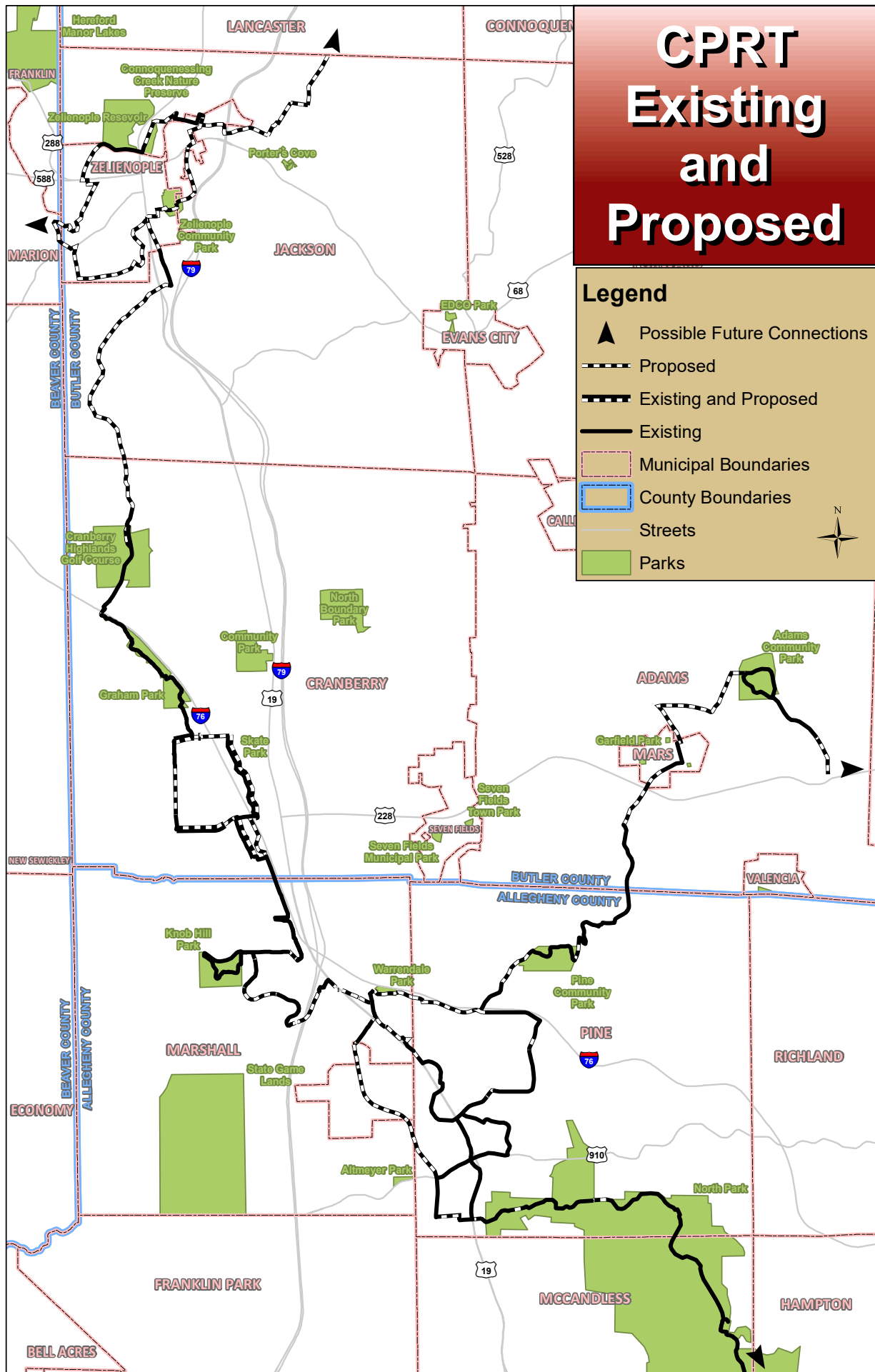
APPENDIX

REGIONAL TRAIL GAP PRIORITIZATION- PRIMARY NETWORK

No.	Project Scope	Length (ft.)	Material and Type	Priority Status	Feasibility
Township of Pine					
1	Pine Park to Treeline Drive	1,500	Asphalt Trail	High	Medium
2	English Road Trail	1,000	Asphalt Trail	High	High
3	Beaver Court Trail to Pine Park	3,000	Asphalt Trail	High	Medium
4	Harmony Trail to Brooktree	1,000	Wooded trail	High	High
5	Route 19 Sidewalk	700	Sidewalk	Medium	High
6	Wallace Road to English Road	800	Mixed sidewalk/Trail	Medium	Medium
7	Lake Drive to North Park	400	Sidewalk	Low	High
9	Warrendale Road Connector	4,000	Trail or Sidewalk	Low	Low
10	Old Harmony Rail Line	3,000	Gravel Trail	Low	Low
Marshall Township					
1	Warrendale Connection- West	2,370	In-Road	High	High
2	Warrendale Connection- Center	1,920	In-Road/Sidewalk/Trail	High	High
3	Warrendale Connection- East	2,710	Trail	Medium	High
4	Shenot Road	2,100	Sidewalk/Trail	High	High
5	Harmony Trail	2,402	Trail	Medium	High
6	Altmyer Connection	340	Sidewalk	High	High
Borough of Bradford Woods					
1	Harmony Trail	5,068	Trail	Medium	High
Adams Township					
1	Three Degree Road from Adams Park to Mars High School	2,950	Trail	High	High
2	Connector from Treesdale to Route 228	2,775	Trail	High	High
3	Connector from Adams Park to Mars Borough	15,140	Trail	Medium	Medium
4	Three Degree Road south from 228 to Valencia Borough	5,350	Trail	Low	Low
Cranberry Township					
1	Haine School Road, from Freedom Road to Dover Drive	3,270	Sidewalk	High	High
2	Rochester Road, from 2620 to Bellevue Commons	250	Concrete sidewalk	High	Medium
3	Freshcorn Road, from Kingston Ave to Jackson Twp	3,110	Concrete sidewalk	High	Medium
4	Freshcorn Road trail through Cranberry Highlands	1,505	Asphalt or gravel trail	Medium	High
5	Rochester Road, from Norman Drive to 2616 Rochester Road	1,720	Concrete sidewalk	High	Low
6	Powell Road, from Graham Park to Glen Eden Roundabout	325	Concrete sidewalk	High	Low
7	Freedom Road, from McIntyre Lane to Haldeman Drive	800	Concrete sidewalk	High	Low
8	Brush Creek Trail, Thorn Hill Industrial Park	3,085	Asphalt or gravel trail	Low	Low
9	Commonwealth Drive, from Marshall Township to Freedom Rd	4,185	Bike lane	Low	High
10	Freedom Road, from Commonwealth Drive to Haine School Rd	4,050	Bike lane	High	Low
11	Executive Drive, from Freedom Road to Rochester Road	5,485	Bike lane	High	Medium
12	Rochester Road, from Executive Drive to Haine School Road	3,435	Bike lane	High	Low
Jackson Township					
1	Zelienople Reservoir Property Connection. Harmony Trail to SR 19.	3,800	Trail	High	High
2	Wild Waterways Trail- west of 19. Along Connoquenessing, west of SR 19.	2,640	Trail	High	Medium
3	Park and Ride to Zelienople Trail. 528 Park and Ride to Zelienople Line on Perry Way and to SR 19 at Tollgate School Rd.	10,560	3,960 Bike lane; 6,600 Trail	High	High
4	Gudekunst Road Connection. SR 19 through expected PRD Development.	3,168	Trail	High	High
5	Evergreen Mill Road Bike Lane	7,285	Bike Lane	Medium	Medium
6	Gudekunst PRD to Cranberry	11, 616	Bike Lane	Medium	Medium
7	Seneca Valley Campus to Evergreen Mill Road	1,320	Trail	Medium	Low







REGIONAL TRAIL GAP PRIORITIZATION- SECONDARY NETWORK

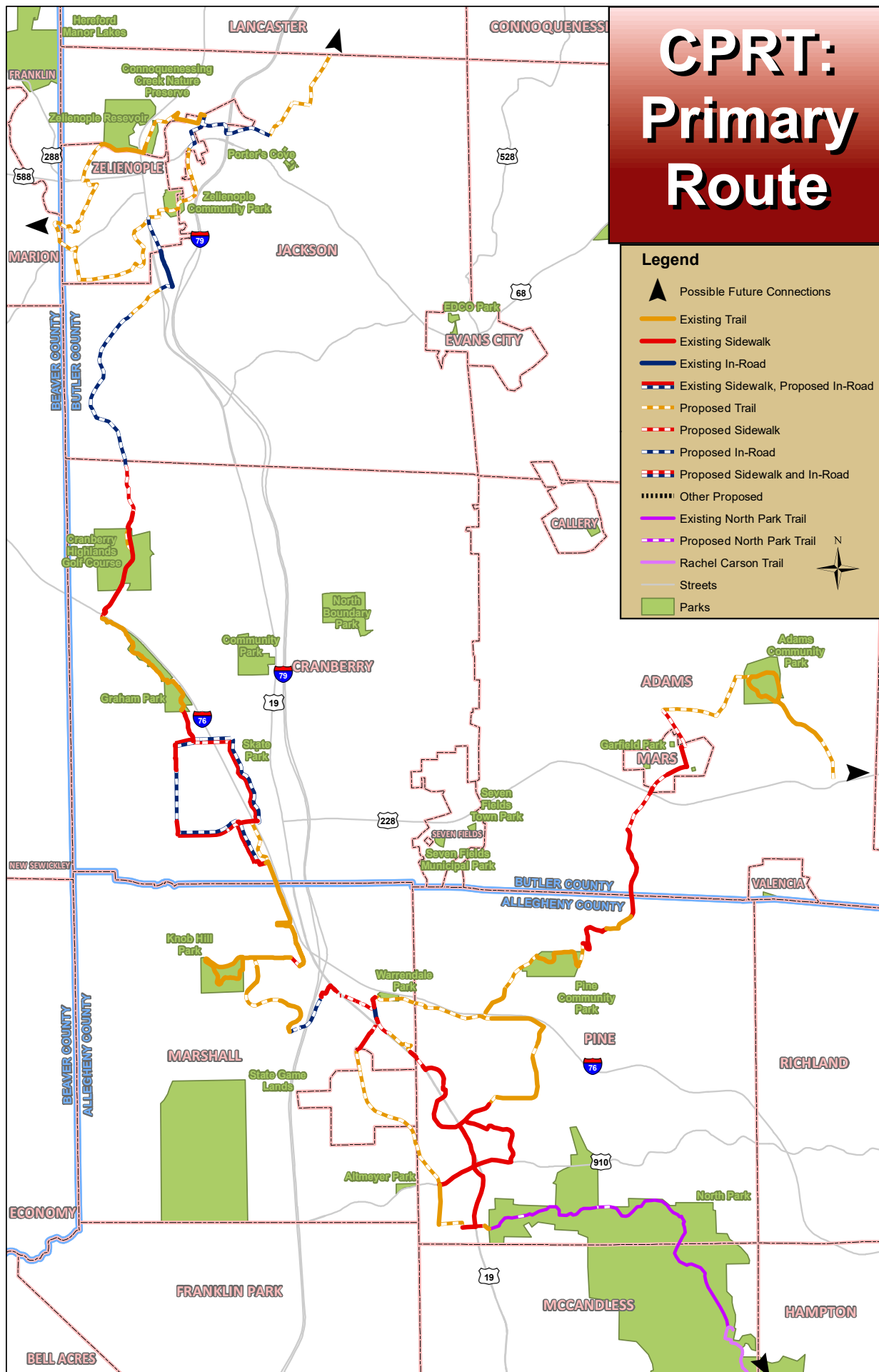
No.	Project Scope	Length (ft.)	Type
Township of Pine			
1	Dean Road to Warrendale Road	2,162	Trail
2	From Pine Crest Court to open space	2,654	Trail
3	Pearce Mill Road, from Pine Park Drive south	1,720	Trail
4	Franklin Road and Mount Pleasant Road, from Butler County line to 824 Mount Pleasant Road	1,156	Sidewalk
5	Warrendale Road, from Pine-Richland High School to East Ridge Drive	2,157	Sidewalk
6	From Pearce Mill Road to open space	1,630	Sidewalk
Marshall Township			
1	Route 910- Altmeyer Park to Wexford Run Road	2,550	Trail
2	Wexford Run Road- Franklin Park to Bradford Woods	5,675	Trail
3	Route 910- Wexford Run Road to Mingo Road	3,370	Trail
4	Route 910- VIP Drive and Franklin Village Connection	795	Sidewalk
5	Mingo Road- Marshall Heights Drive to State Gamelands Road	3,880	In-Road/Trail
6	Mingo Road- State Gamelands Road to Wexford Run Road	6,675	In-Road/Trail
7	Wexford Run Road- Mingo to I-79	1,555	Trail
8	Wexford Run Road to Warrendale Bayne Road	2,420	Trail
9	Thorn Hill Road and Woodland Road to Cranberry Township	435	Trail
10	Route 19- Freeport Road to Cranberry Township	185	Sidewalk
11	Freeport Road- Dutilh Road to Aleah Drive	885	In-Road/Sidewalk/Trail
12	Mt. Pleasant Road- Penticon Lane to Warrendale Park	845	Trail
Borough of Bradford Woods			
1	Wexford Run Trail	844	Trail
Adams Township			
1	Forsyth Road to Cranberry Township	9,490	Trail
2	Three Degree Road, from Route 228 to Valencia	5,738	Trail
3	Hutchman Road to Forsyth Road	5,949	Trail
Cranberry Township			
1	20515 Route 19, from Rochester Road to Progress Avenue	2,402	Trail
2	Ogle View Road, from Unionville to 20581 Route 19	1,007	Sidewalk
3	Rowan Road, from Route 19 to Marshall Road	1,320	Sidewalk
4	Rowan Road to Clear Sprinngs Drive	6,395	Trail
5	MSA Thruway, from Cranberry Springs Drive to Cranbery Woods Drive	1,669	Sidewalk
6	Pendleton Way to Laurel Point	899	Trail
7	Laurel Point to Franklin Road	2,948	Sidewalk
8	Unionville Road, 66A Progress Ave to 65 Progress Ave	128	Sidewalk
9	ROW, from Community Park to Route 19	2,529	Trail
10	Route 19, from trail ROW to 4501 Glen Eden Road	170	Sidewalk
11	North Boundary Road, from Route 19 to 1019 North Boundary Road	1,249	Sidewalk
12	North Boundary Road, from 100 North Boundary Park Drive to 9703 Goehring Road	754	Sidewalk
13	North Boundary Road, from 9703 Goehring Road to Franklin Road	2,748	Trail
14	Franklin Road, from North Boundary Road to Washington Farms	486	Sidewalk
15	Sage Court to Adams Township	4,630	Trail
16	Commonwealth Drive, from 765 to Marshall Township	1,479	In-Road
17	Thorn Hill Road, from 230 Thorn Hill Road to Freedom Road	651	Sidewalk
18	Thorn Hill Road, from Marshall Township to 100 Rolling Road	549	Sidewalk
Jackson Township			
1	Tollgate School Road, from Perry Way to 156 Tollgate School Road	1,366	In-Road
2	From development to Tollgate School Road	2,979	Sidewalk
3	From development to Route 528 Park & Ride	4,170	Trail

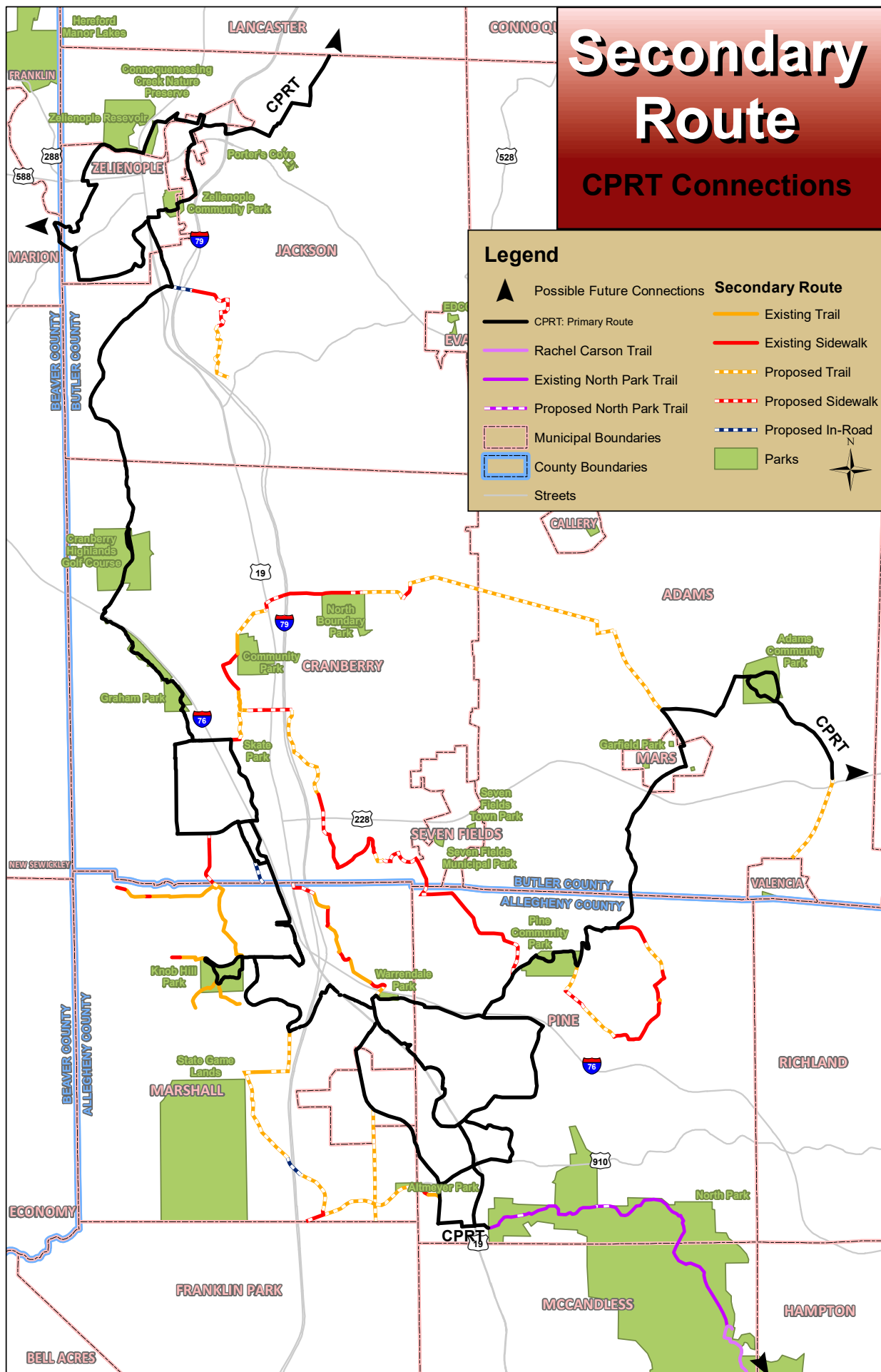


CPRT: Primary Route

Legend

-  Possible Future Connections
-  Existing Trail
-  Existing Sidewalk
-  Existing In-Road
-  Existing Sidewalk, Proposed In-Road
-  Proposed Trail
-  Proposed Sidewalk
-  Proposed In-Road
-  Proposed Sidewalk and In-Road
-  Other Proposed
-  Existing North Park Trail
-  Proposed North Park Trail
-  Rachel Carson Trail
-  Streets
-  Parks







RESOLUTIONS

TOWNSHIP OF PINE

TOWNSHIP OF PINE

RESOLUTION NO. 979

A RESOLUTION OF THE BOARD OF SUPERVISORS OF THE TOWNSHIP OF PINE, A HOME RULE MUNICIPALITY SITUATE IN ALLEGHENY COUNTY, PENNSYLVANIA, ADOPTING THE “COMMODORE PERRY REGIONAL TRAIL PLAN.”

WHEREAS, THE Township of Pine is committed to responsible planning, cooperation with neighboring municipalities, and implementation of policies which further the stated development goals of the Township of Pine (including the establishment of a comprehensive system of trails, sidewalks, and other related infrastructure to facilitate pedestrian movement and movement by non-motorized conveyances throughout the Township of Pine, also, and for such accesses to its neighboring municipalities); and

WHEREAS, the Township of Pine's most recently adopted Comprehensive Plan (approved on February 16, 2016, by Resolution No. 939) emphasized the importance such a comprehensive system of trails, sidewalks, and other related infrastructure to the achievement of the development goals of the Township of Pine and to the general health and welfare of its citizens and residents; and

WHEREAS, the Township of Pine has actively engaged with its neighboring municipalities (including Marshall Township, Adams Township, Cranberry Township, and Jackson Township) in a regional collaboration to study the means by which a more complete and connected active transportation network can be effected throughout the geographic area comprising such five (5) municipalities; and

WHEREAS, the aforementioned regional collaboration has resulted in the joint creation of “The Commodore Perry Regional Trail Plan” by representatives of the five (5) above-mentioned municipalities; and

WHEREAS, “The Commodore Perry Regional Trail Plan” (which consists of text, maps, project charts, and other related items attached thereto) has been reviewed by the Board of Supervisors of the Township of Pine and found to be consistent with the stated planning and development goals for the Township of Pine; and

WHEREAS, a copy of “The Commodore Perry Regional Trail Plan” is attached hereto and shall also be maintained and made available to the public at the administrative offices of the Township of Pine (230 Pearce Mill Road, Wexford, PA 15090).

NOW, THEREFORE, BE IT RESOLVED (AND IT HEREBY RESOLVED AND ADOPTED) that “The Commodore Perry Regional Trail Plan” is approved and adopted by the Township of Pine.

OFFICIAL

**TOWNSHIP OF MARSHALL
RESOLUTION NO. 918**

RESOLUTION OF THE BOARD OF SUPERVISORS OF THE TOWNSHIP OF MARSHALL, ALLEGHENY COUNTY, PENNSYLVANIA ADOPTING THE MULTI-MUNICIPAL TRAIL PLAN TITLED "COMMODORE PERRY REGIONAL TRAIL" AND AUTHORIZING THE PROPER OFFICERS OF THE TOWNSHIP TO TAKE SUCH ACTION AS SHALL BE REASONABLY REQUIRED TO IMPLEMENT THE PLAN.

WHEREAS, the Township of Marshall (the "Township") has been working to implement a pedestrian connectivity plan and develop an extensive network of sidewalks and trails within the Township; and

WHEREAS, the Township recognized its efforts could be greatly enhanced by connecting to a larger regional network of sidewalks and trails; and

WHEREAS, neighboring municipalities Pine Township, Adams Township, Cranberry Township, and Jackson Township have also been working to implement pedestrian connectivity and to develop an extensive network of sidewalks and trails within their respective borders (the "Neighboring Municipalities"); and

WHEREAS, the Township and the Neighboring Municipalities formed a task force to outline a vision for an interconnected regional active transportation network; and

WHEREAS, the Township and the Neighboring Municipalities have (i) evaluated the existing sidewalk and trail networks within their borders, (ii) identified where sidewalk and trail links are practicable and economically feasible, and (iii) developed a comprehensive plan titled "The Commodore Perry Regional Trail" (the "Plan"), a copy of which is attached hereto and incorporated herein, for connecting the existing sidewalk and trails to form an interconnected regional active transportation network.

NOW, THEREFORE, BE IT RESOLVED that the Board of Supervisors of the Township of Marshall hereby resolves as follows, incorporating the above recitals by reference:

SECTION 1. The Township Board of Supervisors hereby adopts the Plan and will endeavor to independently implement the same as advisable and feasible.

SECTION 2. The proper officers of the Township are hereby authorized and directed, in the name of the Township, to take such actions as shall be reasonably required to implement the Plan.

SECTION 3. All prior Resolutions are hereby repealed in whole or in part to the extent inconsistent herewith


SECTION 4. This Resolution shall take effect in accordance with applicable law.

RESOLVED this 20th day of November, 2017 by the Board of Supervisors of the Township of Marshall in lawful session duly assembled.

MARSHALL TOWNSHIP
BOARD OF SUPERVISORS

By: 
Thomas Madigan
Chairman, Board of Supervisors

ATTEST:


Sheryl Snyder
Township Secretary

(Seal)



(B3396817.3)

RESOLUTION NO. 12 of 2017

A RESOLUTION OF THE BOROUGH COUNCIL OF BRADFORD WOODS BOROUGH, A BOROUGH IN ALLEGHENY COUNTY, COMMONWEALTH OF PENNSYLVANIA, ADOPTING THE COMMODORE PERRY REGIONAL TRAIL PLAN.

WHEREAS, Bradford Woods Borough is committed to planning for the future and implementing public policies that realize the vision of a healthy and sustainable Bradford Woods Borough; and

WHEREAS, the Borough Council adopted an update to its Comprehensive Plan that continues this commitment to nature and walk ability; and

WHEREAS, the comprehensive plan recognize the value of pedestrian networks; and

WHEREAS, Bradford Woods Borough is an active engaged partner with neighboring municipalities in Western Pennsylvania; and

WHEREAS, a copy of The Commodore Perry Regional Trail Plan map is attached hereto as Exhibit "A" and a copy of the Commodore Perry Regional Trail Plan, which includes the text, maps, project charts, and any other items which form the whole of The Commodore Perry Regional Trail Plan is available at the Administration offices of Bradford Woods Borough.

NOW, THEREFORE, BE IT RESOLVED, that the Borough Council of Bradford Woods Borough does hereby resolve that The Commodore Perry Regional Trail Plan is adopted.

BE IT FURTHER RESOLVED AND ADOPTED BY THE BOROUGH COUNCIL OF BRADFORD WOODS THIS 11th DAY OF DECEMBER, 2017.

ATTEST: BRADFORD WOODS BOROUGH

Natalie Iniers
Borough Manager

Amber C. Colby
President of Council

ADAMS TOWNSHIP

**ADAMS TOWNSHIP
BOARD OF SUPERVISORS**

RESOLUTION NO. 2017- 21

A RESOLUTION OF THE BOARD OF SUPERVISORS OF ADAMS TOWNSHIP, A SECOND CLASS TOWNSHIP OF THE COUNTY OF BUTLER, COMMONWEALTH OF PENNSYLVANIA, ADOPTING THE COMMODORE PERRY REGIONAL TRAIL PLAN.

WHEREAS, ADAMS TOWNSHIP, is committed to planning for the future and implementing public policies that realize the vision of a healthy and sustainable ADAMS TOWNSHIP; and

WHEREAS, the Board of Supervisors adopted a Comprehensive Plan that continues this commitment to planning and implementation; and

WHEREAS, ADAMS TOWNSHIP, is engaged in the review and planning of sustainable trails and open spaces for its residents and visitors


WHEREAS, ADAMS TOWNSHIP is an active engaged partner with neighboring municipalities in Western Pennsylvania; and

WHEREAS, a copy of The Commodore Perry Regional Trail Plan map is attached hereto as Exhibit "A" and made a part hereof.

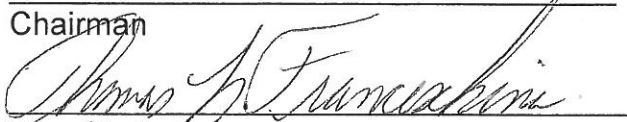
NOW, THEREFORE, BE IT RESOLVED, that the Board of Supervisors of ADAMS TOWNSHIP does hereby resolve that The Commodore Perry Regional Trail Plan is adopted.


SO ADOPTED this 13th day of November, 2017.

ATTEST:


Janet Lubbert
Township Secretary

**ADAMS TOWNSHIP BOARD
OF SUPERVISORS:**

Chairman

Vice Chairman


Supervisor


Supervisor

Supervisor

CRANBERRY TOWNSHIP

TOWNSHIP OF CRANBERRY

RESOLUTION 2017-72

A RESOLUTION OF THE BOARD OF SUPERVISORS OF CRANBERRY TOWNSHIP, A SECOND CLASS TOWNSHIP OF THE COUNTY OF BUTLER, COMMONWEALTH OF PENNSYLVANIA, ADOPTING THE COMMODORE PERRY REGIONAL TRAIL PLAN.

- WHEREAS,** Cranberry Township is committed to planning for the future and implementing public policies that realize the vision of a healthy and sustainable Cranberry Township; and
- WHEREAS,** the Board of Supervisors adopted an update to its Comprehensive Plan entitled the Cranberry Plan Update 2016 that continues this commitment to planning and implementation; and
- WHEREAS,** the Cranberry Plan Update 2016 identifies Transportation and Mobility, Regionalism, and Sustainability as three of the core values of our Community; and
- WHEREAS,** the Bicyclist and Pedestrian Connections Plan and the Comprehensive Recreation and Open Space plan recognize the value of robust pedestrian networks and an interconnected trail system throughout the community; and
- WHEREAS,** Cranberry Township is an active engaged partner with neighboring municipalities in Western Pennsylvania; and
- WHEREAS,** a copy of The Commodore Perry Regional Trail Plan map is attached hereto as Exhibit "A" and a copy of the Commodore Perry Regional Trail Plan, which includes the text, maps, project charts, and any other items which form the whole of The Commodore Perry Regional Trail Plan is available at the Administration offices of Cranberry Township.

NOW, THEREFORE, BE IT RESOLVED, that the Board of Supervisors of Cranberry Township does hereby resolve that The Commodore Perry Regional Trail Plan is adopted.

BE IT FURTHER RESOLVED AND ADOPTED BY THE BOARD OF SUPERVISORS OF THE TOWNSHIP OF CRANBERRY THIS 2ND DAY OF NOVEMBER, 2017.

ATTEST:



Jerry A. Andree, Township Manager

CRANBERRY TOWNSHIP



Richard M. Hadley, Chairman
Board of Supervisors

OFFICIAL

**TOWNSHIP OF JACKSON
RESOLUTION 17-34**

A RESOLUTION OF THE TOWNSHIP OF JACKSON, BUTLER COUNTY, PENNSYLVANIA, ADOPTING THE COMMODORE PERRY REGIONAL TRAIL PLAN.

WHEREAS, Jackson Township is committed to planning for the future and implementing public policies that realize the vision of a healthy and sustainable Jackson Township; and

WHEREAS, the Board of Supervisors adopted a new Comprehensive Plan entitled Jackson Township, Butler County Comprehensive Plan 2017 that continues this commitment to planning and implementation; and

WHEREAS, Jackson Township has adopted a Multi-Municipal Comprehensive Recreation, Parks and Open Space Plan; and

WHEREAS, Jackson Township is an active engaged partner with neighboring municipalities in Western Pennsylvania; and


WHEREAS, a copy of The Commodore Perry Regional Trail Plan map is attached hereto as Exhibit "A" and a copy of The Commodore Perry Regional Trail Plan, which includes the text, maps, project charts, and any other items which form the whole of The Commodore Perry Trail Plan is available at the Administrative offices of Jackson Township.

NOW, THEREFORE, BE IT RESOLVED, that the Board of Supervisors of Jackson Township does hereby resolve that The Commodore Perry Regional Trail plan is adopted.

RESOLVED and ADOPTED this the 16th day of November 2017, by the Board of Supervisors of the Township of Jackson in lawful session duly assembled.

ATTEST:

TOWNSHIP OF JACKSON


Chris Rearick
Township Manager

By: 
Trent Geis
Chairman, Board of Supervisors

(Seal)

