



# SPC's Water Resource Center Workshop

## Local Perspective On Addressing MS4 Requirements



*August 23, 2016*



# **Welcome**

**Tim Schutzman, P.E.**

**Engineering & Environmental Services**

**Waterworks Coordinator**

**724-776-4806 x 1163**

**[Tim.Schutzman@cranberrytownship.org](mailto:Tim.Schutzman@cranberrytownship.org)**

# **Stormwater Program**

**Township's develop comparable ACT 167 (1993 ~1994)**

- **Updated Stormwater Ordinance**
- **Reduced Flooding Problems**
- **Hired a Hydrologist**
- **Push Back from Developers**
- **100% Self Funded**



# Stormwater Runoff Management

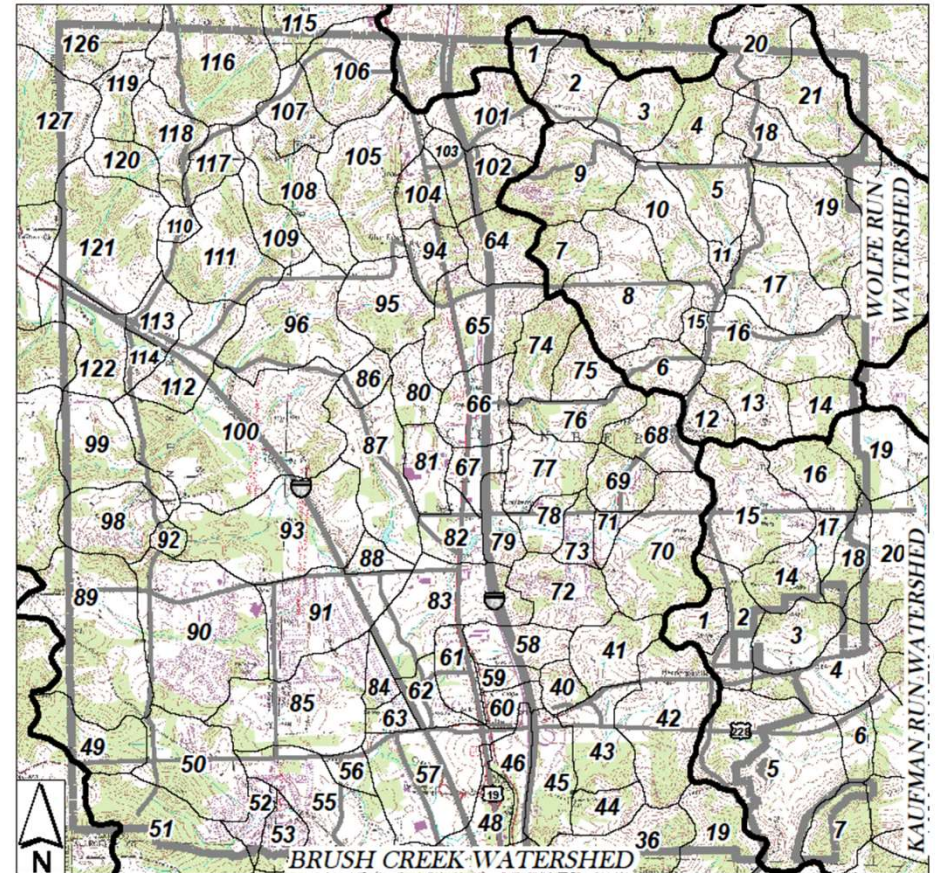
## Township Release Rate Map

### Watershed

1. Brush Creek (127 Subwatersheds)
2. Kauffman Run (20 Subwatersheds)
3. Wolfe Run (21 Subwatersheds)

### Release Rate

Ranges from 50% to 100%





# **Stormwater Program**

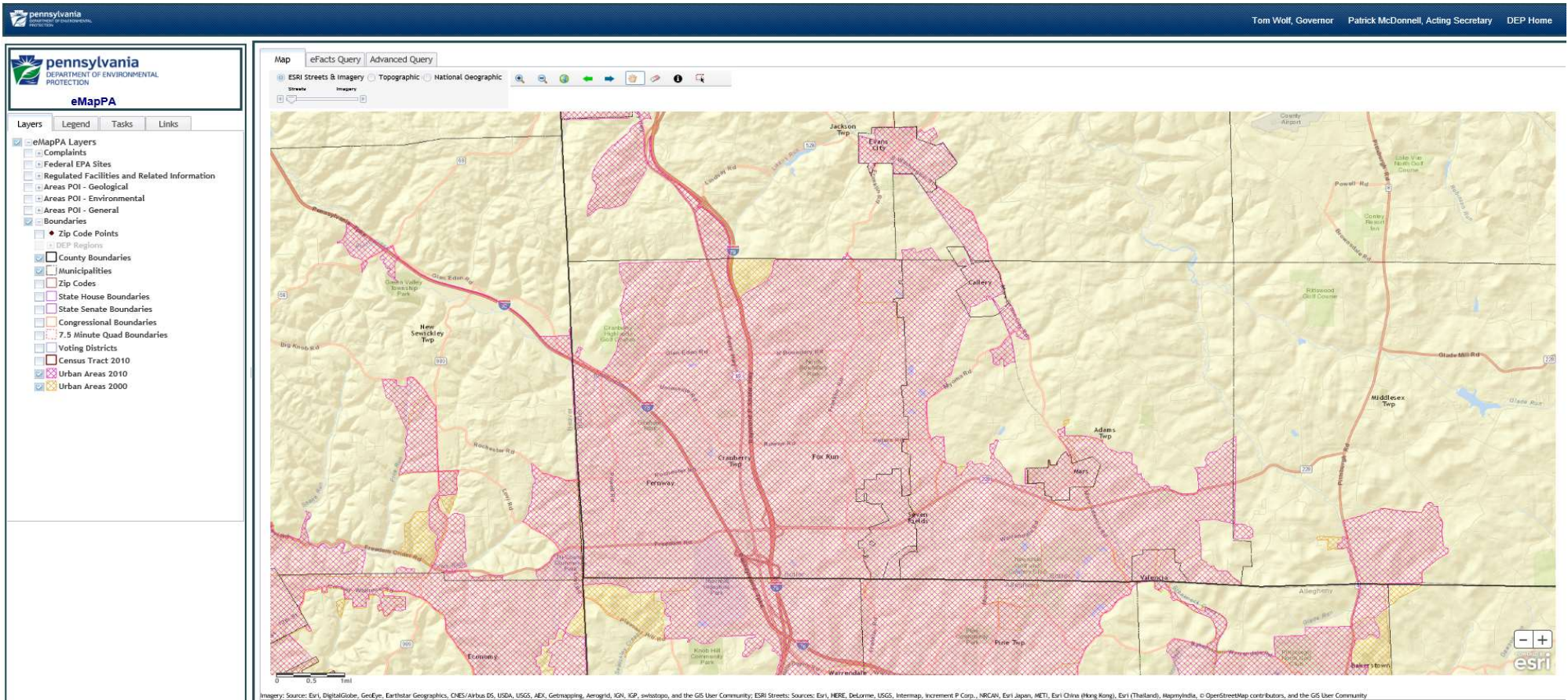
**Municipal Separate Storm Sewer System (MS4)**

**Updated Ordinance 2003**

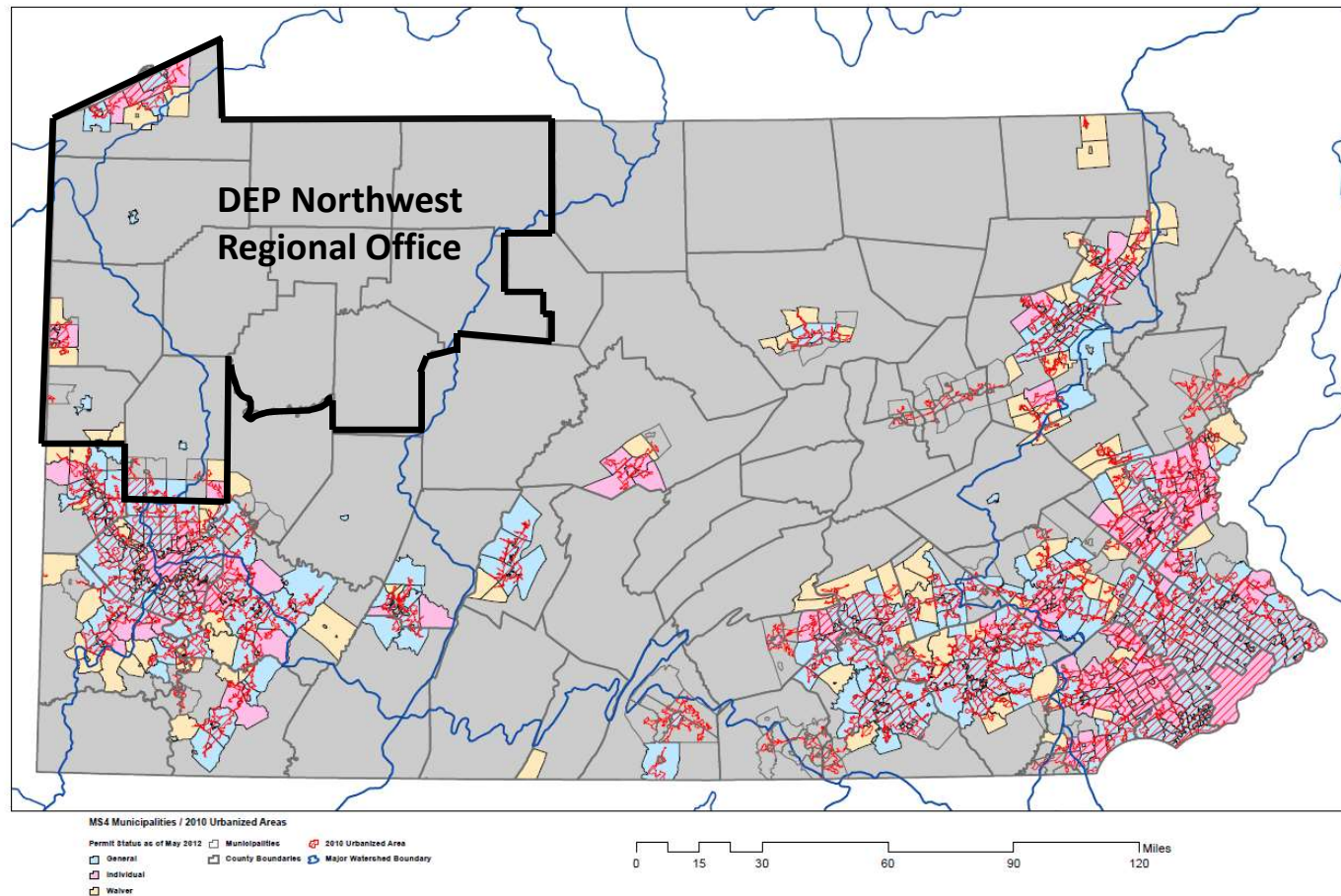
**Butler County Approved Act 167**

**Updated Ordinance 2011**

# 2010 Census - Urbanized Area



# 2010 Census - Urbanized Area



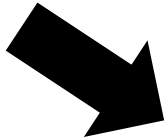


## **Municipal Separate Storm Sewer System (MS4)**

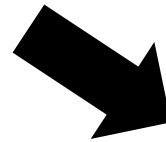
# **Minimum Control Measure #1**

## **Public Education and Outreach on Stormwater Impacts**

# MCM#1 Public Education and Outreach



**pennsylvania**  
DEPARTMENT OF ENVIRONMENTAL PROTECTION



## Cranberry Township

# MCM#1 Public Education and Outreach

- **Federal Regulations**

*Implement a public education program to distribute educational materials to the community or conduct equivalent outreach activities about the impacts of stormwater discharges on water bodies and the steps that the public can take to reduce pollutants in stormwater runoff (40 CFR Part 122.34(b)(1)(i)).*



# Public Education and Outreach on Stormwater Impacts

## • Department of Environmental Protection

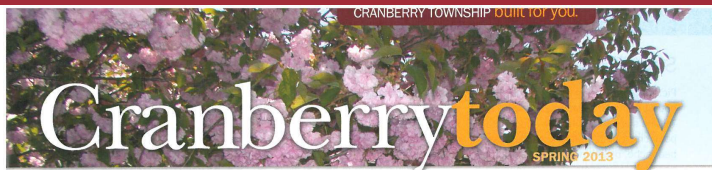
- Best Management Practices (BMPs) and Measurable Goals are to be implemented and achieved:
  1. Develop, implement and maintain a written Public Education and Outreach Program
  2. Develop and maintain lists of target audience
  3. You must annually publish at least one issue of a newsletter, a pamphlet, a flyer, or a web site that includes general stormwater educational information
  4. Distribute stormwater educational materials

# Public Education and Outreach on Stormwater Impacts

- **Target Audience Groups**

- Township Residents
- Home Owners Association
- School Students
- Business Owners
- Contractors
- Municipal Employees

# Cranberry Township Newsletter



## Fugitives Wanted: Tips Gratefully Accepted

Have you seen them?

Arrest warrants issued by District Justices are outstanding on more than 40 individuals for crimes committed in Cranberry Township. They range from writing bad checks and shoplifting to



criminal assault. But all of them are currently at large – people who have eluded capture

by local police and are likely to extend their patterns of crime until they've been apprehended.

So in February, Cranberry police began plastering the fugitives' names, faces, ages, criminal charges, and last known addresses on the Township's website at [cranberrytownship.org/wanted](http://cranberrytownship.org/wanted).

None of the warrants are for residents of Cranberry Township, but most come from nearby communities, and their identities are available to anyone, anywhere, simply by doing an online search.

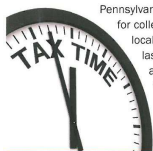
Cranberry police hope that people who recognize a fugitive will either call 9-1-1 or their local police department

with tips concerning the person's whereabouts. Callers do not have to identify themselves, nor will they be subpoenaed as witnesses in court: cases against the accused have already been compiled.

No rewards are currently posted for the people being sought on Cranberry's Ten Most Wanted list. If you have information about any of their whereabouts, don't approach or attempt to apprehend them – just provide police with any information they can use, either by calling 9-1-1 or by email at: [tips@cranberrytownship.org](mailto:tips@cranberrytownship.org), and let them do the rest. ~

**On the lam.** If you've seen any of these people, they're all wanted for crimes committed in Cranberry. Check out the Township's website for their names, photos, crimes and last known mailing addresses. Then call 9-1-1 with any tips that can help police apprehend them.

## What Should I Do With My Local Earned Income Tax Return?



Pennsylvania's procedure for collecting certain local taxes changed last year. Employers are now required to withhold earned income tax from

all their employees. Berkheimer Tax Administrators – Cranberry's income tax collector – now collects the tax from those employers rather than from employees. However, residents must continue filing their final individual tax returns with Berkheimer – either electronically or by mail. Return forms

are available online at [www.hab-inc.com](http://www.hab-inc.com). Questions about your earned income tax, as well as your \$10 Seneca Valley Occupation Tax and \$52 Local Services Tax, should be directed to Berkheimer's Butler County office at 724-282-0377. ~

A Publication of

### ► Inside This Issue:

Public Safety.....	2	Seneca Valley.....	11
2-1-1 Phone Service.....	3	Yarn Bombing.....	12
Engineering.....	4	Special Insert.....	Center Spread
Supervisor's Commentary.....	5	Calendar.....	13
Tech Company Profile.....	6	Parks & Recreation.....	16
Thomson Business Park.....	7	Kids Castle Playground.....	17
Fire Company.....	8	Public Works.....	18
In Briefs.....	10	Finance.....	23



## ENGINEERING

### Improving On Nature: Cranberry's Kinder, Gentler Stormwater Management Program

Stormwater cascades down from higher elevations. So do stormwater regulations.

In the early '70s, a flood of public concern about air and water pollution led to formation of the federal Environmental Protection Agency. Its overflow poured onto the states, where it gave rise to Pennsylvania's Department of Environmental Protection. That, in turn, spilled over onto Butler County's 2011 stormwater management plan. And implementation of the County plan's eventually trickled down onto Cranberry Township.

Rain, of course, is a naturally occurring phenomenon. Rainwater has percolated into soil and run off into streams since the beginning of time. But just because something is natural doesn't mean it's harmless; Mother Nature can be ruthless. Surging stormwater,

quite detailed, its goals are fairly straightforward: decrease flood damage, expand recreational opportunities, enhance fishing, improve well water, upgrade public health, and create a more attractive appearance.

One of the primary instruments for achieving those goals stems from the Township's ability to issue permits for new construction based on plans which include, to the greatest extent practical, best practices for managing stormwater. That authority, in turn, derives from Cranberry's compliance with federal legislation detailing those practices, which carries the unwieldy name of "Federal national Pollutant Discharge Elimination System Phase II, Stormwater Discharges From Small Municipal Separate Storm Sewer Systems General Permit" – or MS4, for short. Cranberry is one of only three Butler County communities obliged to follow its requirements.

#### Exercise control

Staff engineer Tim Schutzman is the Township's point man in the implementation of MS4. "When developers submit plans, I review them to make sure they meet the stormwater code requirements," Schutzman explained. "That includes the release rate of water from the site, the control of water volume from the site, whether they provide for groundwater absorption on their site, and water quality controls from various pollutants on their site. We control for thermal issues, sediment, pollutants, and nutrients – they're all factors in stormwater quality coming off a site."

It's a big task, and some of its provisions – particularly as they relate



**Downstream danger.** Stormwater management has consequences. So does the lack of it. After a heavy rainstorm, this home in Shaler has to deal with those consequences.

to smaller projects, such as single-family homes built outside of any subdivision – are new ones. However, unlike some other communities in the region, Cranberry has had a history of taking stormwater seriously. It has mapped its watersheds and tracked its stormwater outflows in exquisite detail. And it enacted local stormwater controls more than 20 years ago. But it didn't stop there.

"The Township created a stormwater control model back in 1996 which went well beyond what was required," Schutzman said. "People often worry that new development will cause unusual water flows or flooding to their property. We want to assure them that we've already looked at improving how stormwater is being controlled on new development sites to minimize its impact on adjacent property owners."

Managing stormwater effectively is more than just an engineering issue, however; it's also an educational one – raising public awareness about why people should even bother caring about their community's rainwater drainage system. Most residents take it for granted, and the better a system works, the less they notice it. Cranberry's is working just fine. So raising its public profile without needlessly raising alarm, is presenting local officials with an intriguing communication challenge. ~



# Handouts Available at the Municipal Building



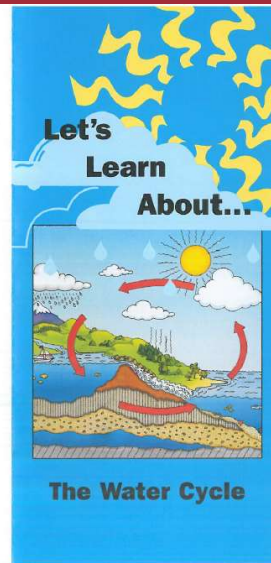
- 1. Water Storage**—Water that is stored on the earth's surface, such as oceans, lakes, and streams.
- 2. Evaporation**—A process in which water is heated and becomes a gas.
- 3. Cloud Storage**—Water suspended in the air.
- 4. Transpiration**—The process in which water vapor moves through plants into the air.
- 5. Precipitation**—Water that returns to the earth as rain, snow, or hail.
- 6. Percolation**—The process in which water moves downward through openings in the soil.
- 7. Groundwater**—Water that is underground, as in a spring or a well.



American Water Works Association

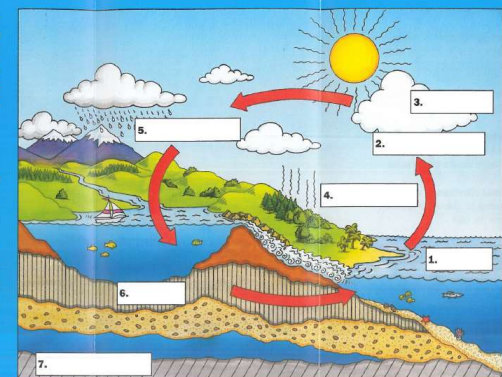
©2005 American Water Works Association  
Catalog No. 70112

Printed on Recycled Paper



Match the  
Correct Term  
for Each  
Stage of the  
Hydrologic  
(Water) Cycle

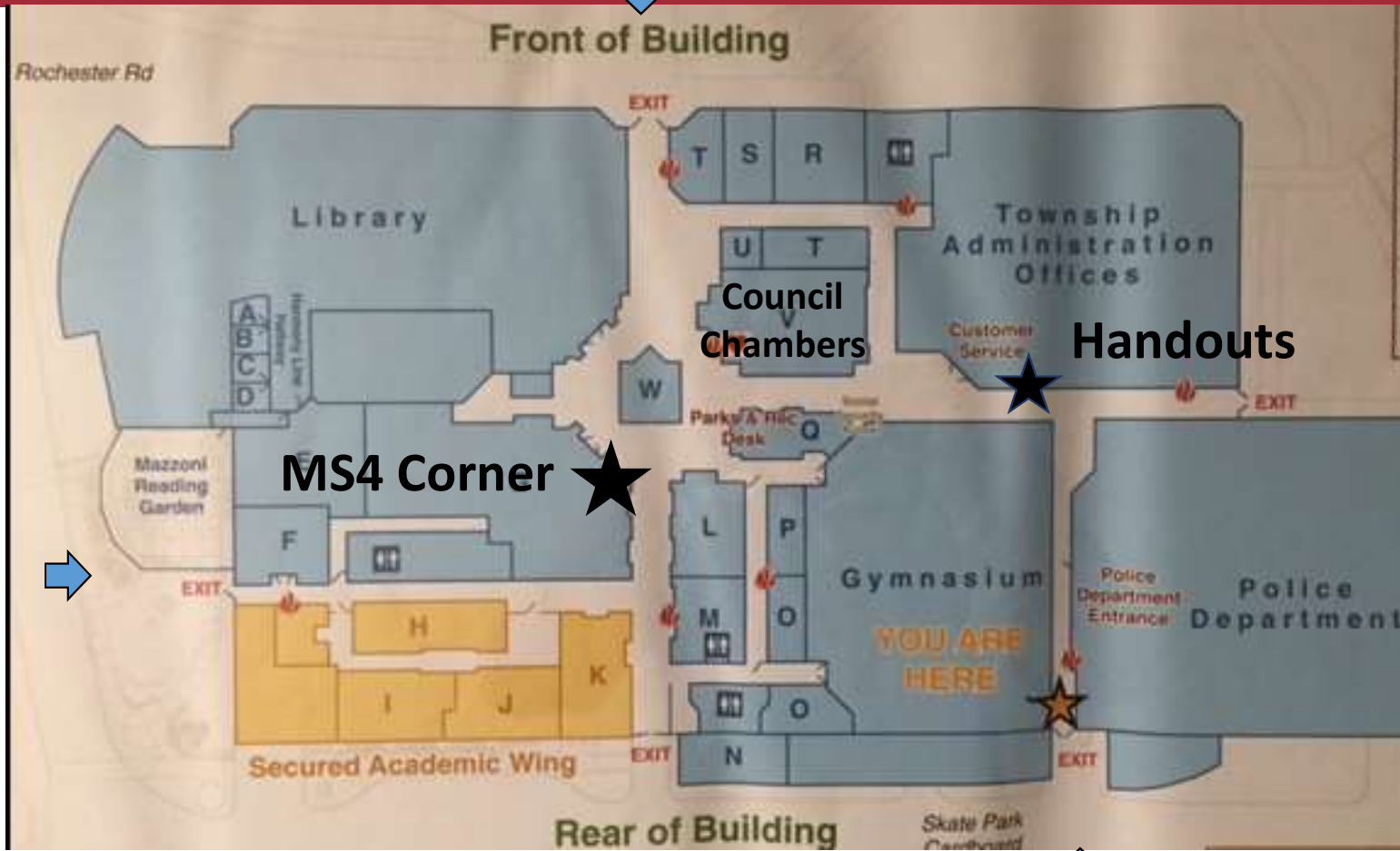
Percolation  
Water Storage  
Transpiration  
Groundwater  
Cloud Storage  
Precipitation  
Evaporation



# Handouts Available at the Municipal Building



# Target Location For Information





# Partnership Program with Haine Middle School

**Students assist  
Township staff with  
Public Presentation**



# Promote Safely Disposing of Household Chemicals



**COLLECTING  
HOUSEHOLD  
CHEMICALS**

**412-488-7452**  
[www.swpahhw.org](http://www.swpahhw.org)

Sponsored by



**SOUTHWESTERN PA  
HOUSEHOLD HAZARDOUS  
WASTE TASK FORCE**

**UPMC**



**BOARD OF BUTLER  
COUNTY COMMISSIONERS**

Upcoming Collections:

September 20 ..... Westmoreland County  
September 27 ..... Allegheny County  
October 4 ..... Beaver County

## Safely Dispose of Common Household Chemicals

**Butler County  
Manheim Pittsburgh**  
(formerly Butler Auto Auction)  
Route 19, Cranberry Township

**Saturday, August 16**  
**9 am - 1 pm**

**FEE: \$2/gallon – Cash Only**

**CRANBERRY  
TOWNSHIP**

**ACCEPTABLE ITEMS INCLUDE:**

- aerosol cans
- automotive fluids  
motor oil, transmission fluid,  
antifreeze, brake fluid
- batteries
- chemistry sets
- compact fluorescent bulbs (CFLs)
- gasoline and kerosene
- household cleaners  
ammonia, drain openers,  
acid cleaners, oven cleaners
- mercury
- paint products  
latex, oil based, alkyd based,  
arts/crafts chemicals,  
rust preservatives, creosote,  
water sealers, paint thinners,  
furniture strippers
- pesticides/herbicides  
rodent killers, insecticides,  
weed killers, mothballs, fertilizer
- photo chemicals
- pool chemicals

**WE DO NOT ACCEPT:**

- ammunition • appliances • bulk waste • commercial and industrial waste • compressed gas cylinders (including propane tanks) • drugs • explosives • flares • fluorescent tubes • leaking containers • medical waste (including needles) • PCBs and dioxin • radioactive materials (including smoke detectors) • tires





# Cranberry Township Web Site

[Our Government](#) [Township Services](#) [Living Here](#) [Doing Business](#) [Self Service](#) [Cranberry Connect](#)

**CRANBERRY TOWNSHIP** *built for you.*  
PENNSYLVANIA

 Township Weather

Select Language

Search

About Us

How Do I?

Departments

Employment

Fees/Codes/Ordinances

Online Agendas

Recycling

Questions? Comments?


Contact Us Today

 **CRANBERRY TOWNSHIP**  
**business hub**

 **SUMMER PROGRAMS**  
Camp Cranberry & More!

 **SELF SERVICE:**  
View Bills & Payment Options

 **Brush Creek Water Pollution**  
Control Facility Upgrade

 **MANAGER'S COFFEE**

 **FEATURED VIDEOS**

 2525 Rochester Road Suite 400  
Cranberry Township  
Pennsylvania 16066-6499  
Ph: 724-776-4806  
Contact Us

Print Page  
Email Page  
Blog

Cranberry Connect Cranberry Today  
Property Finder  
Sitemap  
Copyright Notices

Connect with Cranberry  
Facebook  
Twitter  
YouTube  
Mobile Site  
App Store  
RSS

 Public Library  
Inform, inspire, enrich.

 **CRANBERRY TOWNSHIP**  
**PARKS & RECREATION**

 Cranberry  
Highlands  
Golf Course


 **News & Alerts**  
*Sign Up Today!*

 **CRANBERRY**  
**CONNECT**

 **COMMUNITY**

 **SAFETY**

 **RECREATION**

 **News Briefs**  **Township**

 **VIEW ALL NEWS**

**Late summer's bounty**  
The Farmer's Market continues on Fridays in the Municipal Center rear parking lot, from 3.30 to 6 pm. The Saturday market, at the Rt. 19 Fire Station is over for the season.

**Discover Your Perfect CarFit**  
The free check takes about 20 minutes. While you sit in your car, a trained evaluator checks 12 points that make your driving experiences as safe as it can be. [Read on...](#)

**Why is my tax money paying for that road?**  
It's probably not [Manager's Blog...](#)

**Coffee goes everywhere in Cranberry**  
Manager's conversation series is stronger than ever [Read the Manager's Blog](#)

**Cranberry just might pay you \$50 for a cup of water**  
But only if you live in certain areas [Read on...](#)

**Streetscape aesthetics poised to expand**  
Enhancements to accompany new non-residential construction [Read on...](#)

**Township makes nice with Harrisburg**  
PennDOT service swap arrangement approved [Read on...](#)

**Rules for Planned Residential Developments updated**  
Goal is to simplify, accelerate, and improve PRD construction [Read on...](#)

**Sewer line to extend along Rowan Road**  
Township agrees to secure easement [Read on...](#)

**Marshall Road distribution warehouse okayed**  
Building site consolidates four adjacent lots [Read on...](#)

**EVENTS**

**August 13**  
Sheriff's Office: Gun Licensing

**August 15**  
Zoning Hearing Board - Cancelled

**August 16**  
Family Movie Night

**August 18**  
Give a Pint, Get a Round - Community Blood Drive

**August 18**  
Free Outdoor Concert

**August 19**  
Farmer's Market

**August 20**  
Hazardous Waste Collection

**August 20**  
Learn CPR and First Aid

 **VIEW ALL EVENTS**

Employee Access

Powered by CivicPlus

[Our Government](#) [Township Services](#) [Living Here](#) [Doing Business](#) [Self Service](#) [Cranberry Connect](#)

**CRANBERRY TOWNSHIP** *built for you.*  
PENNSYLVANIA

 Township Weather

Search

Bids & Contracts

Fees, Codes, Ordinances

FEMA flood plain map

Township Projects

Solid Waste Ordinance

Waste Collection

 Public Library  
Inform, inspire, enrich.

 **CRANBERRY TOWNSHIP**  
**PARKS & RECREATION**

 Cranberry  
Highlands  
Golf Course

 **News & Alerts**  
*Sign Up Today!*

 **CRANBERRY**  
**CONNECT**


**You are here:** Home > Township Services > Engineering & Environmental Services

**Engineering & Environmental Services**


**Township Projects**

 [Learn More >](#)

**Bids and Contracts**

 [Learn More >](#)

**Bond Release**

 Bond Release Info  
Procedures  
Deadlines

 Road Occupancy  
Paving  
Maps

**Engineering Information**

 **Storm Sewer System**

**Municipal Separate Storm Sewer System (MS4)**

[Learn More >](#)

**Contact**

Jason Kratsas, P.E., Director of Engineering & Environmental Services  
[E-mail](#)

2525 Rochester Road  
Cranberry Township, PA 16066-6499  
Ph: 724-776-4806  
Fx: 724-776-4420  
Hours  
7:30 AM - 5:00 PM  
Monday - Friday  
[Staff Directory](#)

Select Language



# Cranberry Township Web Site

[Our Government](#) [Township Services](#) [Living Here](#) [Doing Business](#) [Self Service](#) [Cranberry Connect](#)

**CRANBERRY TOWNSHIP** built for you.  
PENNSYLVANIA

Township Weather

Search

When It Rains It Drains

Guide to Healthy Habits for Clean Water

Citizen's Guide to Understanding Stormwater

Public Library  
inform, inspire, enrich.

CRANBERRY TOWNSHIP  
PARKS & RECREATION

Cranberry Highlands Golf Course

News & Alerts Sign Up Today!

CRANBERRY CONNECT

Select Language

You are here: Home > Township Services > Engineering & Environmental Services > Bond Release and Engineering > Storm Sewer System

**Storm Sewer System**

Clean Water



Everybody's Business

In an ongoing attempt to make stormwater cleaner, the Pennsylvania Department of Environmental Protection is implementing a new permit to meet new federal regulations. As a part of this permit small communities must implement a storm water management program, track progress towards its goals, and report on its progress.

A Lesson in Stormwater Management by Haines



Stormwater runoff - what is it and why does it matter?

The stormwater program focuses on 6 goals:

Public Education Distribute "When It Rains It Drains" pamphlet as well as other stormwater pamphlets to all target audiences, run stormwater ads in the newspaper, distribute posters to schools, community organizations, and businesses.

Public involvement Conduct public meeting to inform public about the Township's storm water management program. Develop volunteer monitoring team to monitor communities stormwater. They will report any illegal dumping and any visible pollutants in streams.

Illicit discharge detection and elimination Map all outfalls in community. Conduct field screening of 25% of communities outfalls each year to determine illicit discharges. Remove or correct illicit discharges.

Construction site stormwater runoff management This section addresses the education of developers, of the enforced stormwater management codes.

Post Construction stormwater management This sections addresses the management of the codes dealing with stormwater runoff after construction is complete.

Good housekeeping and pollution prevention Comprehensive pollution prevention program for municipal operations. Focusing on vehicle maintenance, fueling and washing, maintenance of stormwater facilities, and employee training.

When It Rains, It Drains



Print Page

Email Page

Blog

Cranberry Connect

Property Finder

Sitemap

Cranberry Today

Accessibility

Copyright Notices

Connect with Cranberry

Facebook

Twitter

YouTube

Mobile Site

App Store

RSS

2525 Redwester Road Suite 400  
Cranberry Township  
Pennsylvania 16006-6499  
910-724-776-4906  
Contact Us



[Our Government](#) [Township Services](#) [Living Here](#) [Doing Business](#) [Self Service](#) [Cranberry Connect](#)

**CRANBERRY TOWNSHIP** built for you.  
PENNSYLVANIA

Township Weather

Search

When It Rains It Drains

Guide to Healthy Habits for Clean Water

Citizen's Guide to Understanding Stormwater

Public Library  
inform, inspire, enrich.

CRANBERRY TOWNSHIP  
PARKS & RECREATION

Cranberry Highlands Golf Course

News & Alerts Sign Up Today!

CRANBERRY CONNECT

Select Language

You are here: Home > Township Services > Engineering & Environmental Services > Bond Release and Engineering > Storm Sewer System > What is stormwater runoff?

**What is stormwater runoff?**

10 Things You Can Do to Prevent Stormwater Runoff Pollution

- Use fertilizers sparingly and sweep up driveways, sidewalks, and gutters
- Never dump anything down storm drains or in streams
- Vegetate bare spots in your yard
- Compost your yard waste
- Use least toxic pesticides, follow labels, and learn how to prevent pest problems
- Direct downspouts away from paved surfaces; consider a rain garden to capture runoff
- Take your car to the car wash instead of washing it in the driveway
- Check your car for leaks and recycle your motor oil
- Pick up after your pet
- Have your septic tank pumped and system inspected regularly

Stormwater pollution from point sources and nonpoint sources is a challenging water quality problem. Unlike pollution from industry or sewage treatment facilities, which is caused by a discrete number of sources, stormwater pollution is caused by the daily activities of people everywhere.

Rainwater and snowmelt run off streets, lawns, farms, and construction and industrial sites and pick up fertilizers, dirt, pesticides, oil and grease, and many other pollutants on the way to our rivers, lakes, and coastal waters. Stormwater runoff is our most common cause of water pollution.

Cranberry Township is doing all it can to successfully manage stormwater - but we can't do it alone.

More about our [Storm Sewer system](#)

**EPA Resources**

Public Education and Outreach - an informed community is crucial to the success of a stormwater management program - to assure greater support and greater compliance.

Public Participation/Involvement - The public can provide valuable input and assistance to a municipal stormwater management program.

Illicit Discharge Detection and Elimination - Discharges into the storm sewers often include wastes and wastewater from non-stormwater sources. Cranberry has a plan to address illegal discharges.

Construction Site Runoff Control - Contractors needs to be aware of requirements and how to satisfy them.

Post-Construction Runoff Control - Post-construction stormwater management in areas undergoing new development or redevelopment is necessary because runoff from these areas has been shown to significantly affect receiving waterbodies.

Pollution Prevention/Good Housekeeping - This is a key element for MS4 stormwater management programs.

QUICK LINKS

When It Rains, It Drains

After the Storm

Water Efficient Landscaping

When you fertilize the yard

When you wash the car in the driveway

Leaking oil goes from cars

When your pet poops in the yard

Water conservation tips

Make your home a solution to stormwater pollution

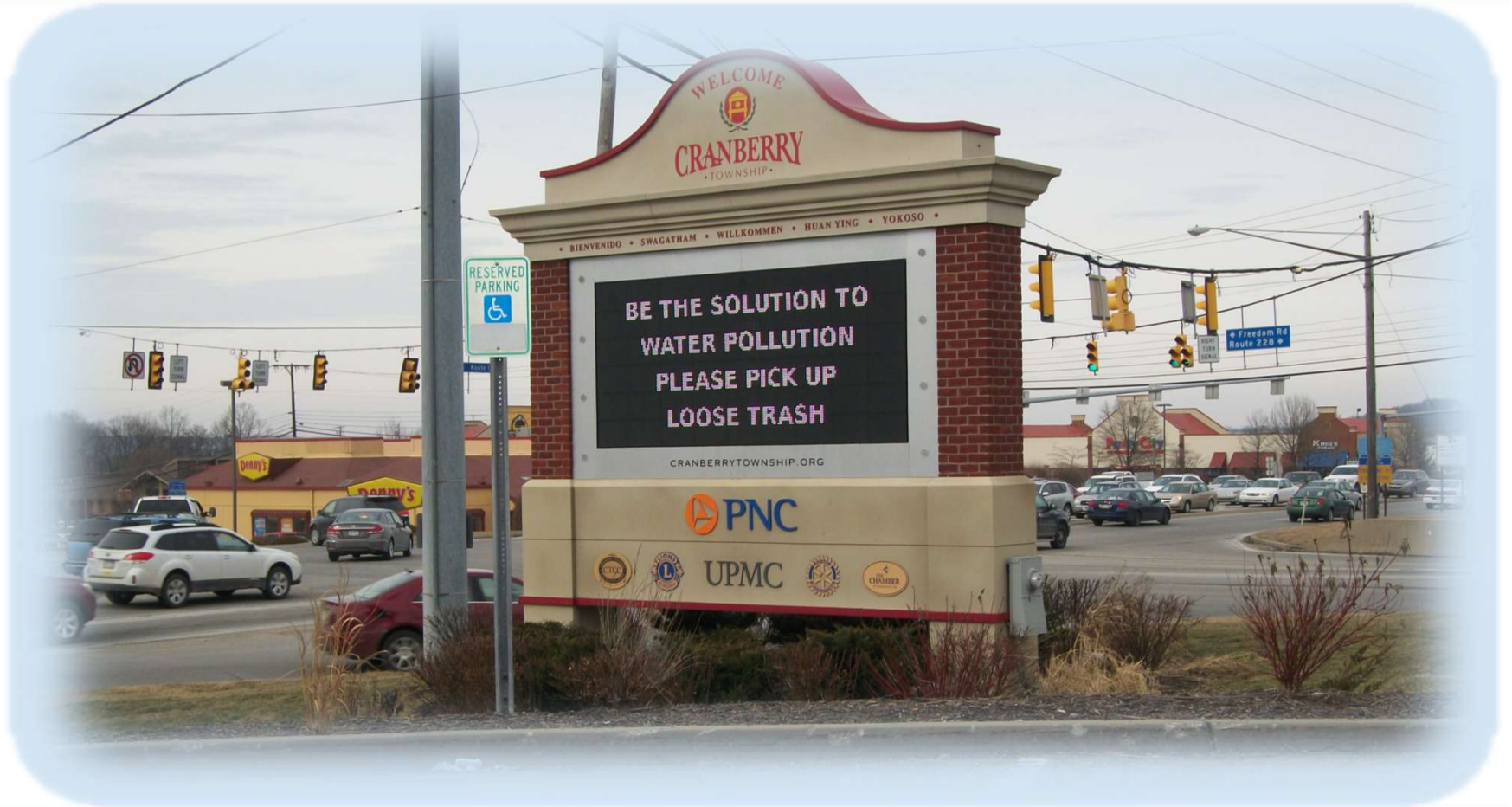
VIEW ALL LINKS

2525 Redwester Road Suite 400  
Cranberry Township  
Pennsylvania 16006-6499  
910-724-776-4906  
Contact Us



 **CRANBERRY**  
TOWNSHIP

# Notice on Digital Sign at Intersection of S.R.19 & S.R. 228





# Notice on Digital Sign at Intersection of S.R.19 & S.R. 228

3/16- 3/23

BE THE SOLUTION TO  
WATER POLLUTION  
PLEASE PICK UP  
LOOSE TRASH

3/24- 3/30

CRANBERRY DESERVES  
TRASH-FREE STREAMS  
NO TRASH  
LEFT BEHIND

# Dumpster Management Handout



How to manage your  
Commercial Dumpsters

CRANBERRY TOWNSHIP built for you.



## Dumpster Management?

Almost every business generates waste and temporarily stores it on-site. Many businesses have dumpsters, compactors, or refuse bins. These containers are typically kept behind buildings or in alleys, where they are often out of sight and out of mind.

**Dumpster runoff can contain litter, grease, dangerous chemicals and other forms of waste!**



## What is Stormwater?

Stormwater is water from rain or melting snow that does not soak into the ground but runs off into waterways. Polluted runoff degrades our lakes, rivers, wetlands and other waterways. Polluted stormwater can harm fish and wildlife populations, kill native vegetation, foul drinking water, and make recreational areas unsafe and unpleasant.

**Be a Proactive Watershed Hero,  
If you notice that your Dumpster  
is leaking, contact your refuse  
hauler and ask them to switch  
out the container!**

Cranberry Township Ordinance 2004-353

The storage of all municipal waste shall be practiced so as to prevent the attraction, breeding or harborage of insects or rodents and to prevent conditions which may create potential hazards to public health or which may create fire and other safety hazards, odors, unsightliness, or public nuisance. Any person accumulating or storing municipal waste on private or public property shall insure the sanitary and legal disposal of such waste...



Leakproof, covered garbage containers are required under municipal code §5-224.

## Best Management Practices

Inspect dumpsters daily, look for spills or leakage. Clean up any spills using dry methods, spill kits, kitty litter, etc.

Repair or replace leaking dumpster

Increase receptacle service frequency if dumpster is routinely overloaded

Keep lid on dumpster closed to keep rain water out

Do not place liquid food wastes in the dumpster

Train employees on proper disposal techniques

Keep dumpster area swept clean

Dumpsters and other waste containers located outside **must** be kept in an approved secure enclosure!

## Provide Educational Material With Building Permits

### Don't Let Storm Water Run Off With Your Time and Money!

#### What the Construction Industry Should Know About Storm Water In Our Community

The construction industry plays an important role in improving our community's quality of life by not only providing new development, but also protecting our streams and rivers through smart business practices that prevent pollution from leaving construction sites.

Storm water runoff leaving construction sites can carry pollutants such as dirt, construction debris, oil, and paint off-site and into storm drains. In our community, storm drains carry storm water runoff directly to local creeks, streams, and rivers with no treatment. Developers, contractors, and homebuilders can help to prevent storm water pollution by taking the following steps:

1. Comply with storm water permit requirements.
2. Practice erosion control and pollution prevention practices to keep construction sites "clean."
3. Conduct advanced planning and training to ensure proper implementation on-site.

The remainder of this fact sheet addresses these three steps.

#### Storm Water Permit Requirements for Construction Activity

Planning and permitting requirements exist for construction activities. These requirements are intended to minimize storm water pollutants leaving construction sites.

- Pennsylvania's Erosion and Sediment Pollution Control Program (25 Pa. Code, Chapter 102) requires Erosion and Sediment Control Plans for all earth disturbing activities.
- The National Pollutant Discharge Elimination System (NPDES) Permit Program (25 Pa. Code, Chapter 92) requires that construction activities disturbing greater than one acre submit a Notice of Intent for coverage under a general NPDES permit.



Knowing your requirements before starting a project and following them during construction can save you time and money, and demonstrate that you are a partner in improving our community's quality of life. For more information about these programs, contact your local county conservation district office or the Department of Environmental Protection.

#### Erosion Control Practices:

- Perimeter controls (e.g. silt fence)
- Sediment traps
- Immediate revegetation
- Phased, minimized grading
- Construction entrance
- Protection of streams and drainage ways
- Inlet protection



#### An Ounce of Prevention

Rain that falls onto construction sites is likely to carry away soil particles and other toxic chemicals present on construction sites (oil, grease, hazardous wastes, fuel). Storm water, if not properly managed, carries these pollutants to streams, rivers, and lakes. Erosion and sediment control practices can serve as a first line of defense,

#### Pollution Prevention Practices:

- Designated fueling and vehicle maintenance area away from streams.
- Remove trash and litter.
- Clean up leaks immediately.
- Never wash down dirty pavement.
- Place dumpsters under cover.
- Dispose of all wastes properly.

minimizing clean up and maintenance costs, and the impacts to water resources caused by soil erosion during active construction. Erosion controls can reduce the volume of soil going into a sediment control device, such as a sediment trap, therefore, "clean out" frequencies are lower and maintenance costs are less. When possible, divert water around the construction site using berms or drainage ditches.

In addition, use pollution prevention and "good housekeeping measures" to reduce the pollution leaving construction sites as well. This can be as simple as minimizing the pollution source's contact with rainwater by covering it, maintaining a "clean site" by reducing trash and waste, and keeping vehicles well maintained.

#### The Best Laid Plans

Plans such as erosion and sediment control plans and storm water pollution prevention plans are important tools for outlining the erosion control and pollution prevention practices that you will use to manage storm water runoff prior to breaking ground. Developing good plans allows for proper budgeting and planning for the life of the project. Proper installation and maintenance of erosion and storm water controls is essential to a plan that works. Training for on-site staff helps to ensure the proper installation and maintenance of erosion controls and pollution prevention practices. Inspect controls and management techniques regularly to ensure they are working, especially after storm events. If polluted storm water is leaving the site, you may need to repair or add additional storm water controls.



#### The Bigger Storm Water Picture

Your community is preventing storm water pollution through a comprehensive storm water management program. This program addresses storm water pollution from construction, but it also deals with new development, illegal dumping to the storm sewer system, and municipal operations. It will also continue to educate the community and get everyone involved in making sure the only thing that storm water contributes to our streams is . . . water! Contact your community or the Pennsylvania Department of Environmental Protection for more information about storm water management.

#### For more information:

Pennsylvania Association of Conservation District's:  
<http://www.pacd.org/default.html>  
Pennsylvania Handbook of Best Management Practices for Developing Areas:  
[http://www.pacd.org/products/bmp/bmp\\_handbook.html](http://www.pacd.org/products/bmp/bmp_handbook.html)  
Storm Water Manager's Resource Center:  
<http://www.stormwatercenter.net>  
Pennsylvania Department of Environmental Protection:  
<http://www.dep.state.pa.us>





# Employee One Stop – Communication



## StaffLines



**A visit to the Brush Creek Plan**



**Learning more about engineering and recycling**

## Successful E-recycling event



Steve Mahoney a Seneca Valley senior and a group of his friends unloaded over 28,000 pounds of electronic equipment at the April electronic recycling event. Steve organized the volunteers as part of his senior project.

**Lorin Meeder** (Environmental Projects Coordinator) coordinates the two annual e-recycling events. **Andrew Clemens** (I.T.) and his son Seth also pitched in to help people

who drove through and dropped off unwanted equipment.

Hi-Tech Recyclers efficiently packed and loaded everything in 2 truckloads.

The next free electronic recycling event will be Sat., September 17 at the Public Works Operations Facility.

# Employee Training

- **Attend Workshops (DEP, SPC,PWEA)**
- **Webinars**
- **Attend Conferences (PSATS, 3 Rivers Wet Weather)**
- **In House Training Program with Public Works**



## **Municipal Separate Storm Sewer System (MS4)**

# **Minimum Control Measure #2**

# **Public Involvement / Participation**

# MCM #2 Public Involvement/ Participation

- **Federal Regulations**

*Comply with applicable state and local public notice requirements when implementing a public involvement / participation program (40 CFR Part 122.34(b)(2)(i)).*

# Public Involvement / Participation

## • Department of Environmental Protection

- Best Management Practices (BMPs) and Measurable Goals are to be implemented and achieved:
  1. Develop, implement and maintain a written Public Involvement & Participation Program
  2. Prior to adoption of any ordinance by this General Permit, provide adequate public notice and opportunities for public review, input and feedback
  3. Regularly solicit public involvement and participation from the target audience groups
    - Conduct one public meeting per year

# Public Involvement / Participation

- **How to get the public involved?**

- **Target Audience Groups**

- **Township Residents**
    - **Business Owners**
    - **Municipal Employees**
    - **School Students**
    - **Home Owners Association**

# Adopt-A-Roadway Program

Since  
1997



2016  
Still Going  
Strong!!

1. Boy Scout Troop 403 – Ehrman /Old Ehrman Road
2. Boy Scout Troop 404 – Peters Road
3. BC#- Cranberry Center – Exe. Dr./Thomson PK Dr
4. Church of JC of Latter-Day Saints – Haine School Rd.
5. Crossroad Church – Unionville & Ogleview Roads
6. Cranberry Women's Club – Progress Avenue
7. The Davis Family – Freshcorn Road
8. Karen & Gary Gajdzik – Hope & Woodlawn Roads
9. Grace Church – Marshall Road
10. Graf Family – Goehring Road
11. Hardman Family – Glen Rape Road
12. Herbert, Rowland, Grubic (HRG) – Graham School Rd.
13. The Lawver Family – Darlington Road
14. Lowe's – Mars Road
15. Oak Grove Lutheran Church – Powel Road
16. Pindroh Family – Burke Road
17. Plains United Presbyterian Church – Bear Run Road
18. Manheim Pittsburgh – Unionville Road
19. Refresh Dental – Commonwealth Drive
20. Young Bros Tae Kwon Do - Powell Road
21. Volunteer Ambulance Corps – North Boundary Road
22. Zona, Lou CPA – Old Route 19



# Rain Barrel Classes



**SAVE MONEY, CONSERVE WATER!**

## RAIN BARREL CLASS

Presented by Haine Middle School & Cranberry Township

Monday, May 9 @ 6:30 PM  
Cranberry Township Municipal Center Council Chambers

**Fee: \$30**

**EACH PARTICIPANT RECEIVES A RAIN BARREL**  
Limited to 30 Participants  
Open to Cranberry Twp. & Seven Fields Residents Only

Register: 724-776-4806  
Cranberry Township Customer Service Center

Learn about

- Water Conservation
- Storm Water Control
- How to Install a Rain Barrel



# Rain Barrel Classes



Sponsored by Home Depot and Fiskars  
Supported by Cranberry Township

# Sponsor Composting Class

Reduce Solid Waste • Turn Kitchen Wastes Into Gardening Soil

LEARN



BACKYARD  
COMPOSTING

...and get your own  
Earth Machine Home Composter

**FREE** \$70 Retail Value  
(Just By Attending The Class)

**Presented By: Butler County Master Gardeners**  
**Sponsored By: Cranberry Township**




**7:00-9:00pm**  
Thursday Sept. 15th  
**CRANBERRY TOWNSHIP  
RESIDENTS ONLY**  
Located in the  
Council Chambers at the  
Municipal Center  
Registration required.  
Class limited to 50 participants

Register by Calling...Cranberry Twp.  
Customer Service Center  
**724-776-4806**



**CRANBERRY**  
TOWNSHIP  
Cranberry Township  
Supports Backyard Composting

Conserve Landfill Space • Help The Environment



**CRANBERRY**  
TOWNSHIP

**Backyard  
Composting  
Instructional Class**

*Sponsored by Cranberry Township  
Presented by the Butler County Master Gardeners*

**MONDAY, OCTOBER 24**

**LOCATION**  
Cranberry Township Municipal Center Council Chambers  
2525 Rochester Road, Cranberry Township 16066


**TIME** 7:00pm

**FEE** \$10  
Includes Earth Machine Backyard Compost Bin

**REGISTRATION REQUIRED**  
Call the Cranberry Township  
Customer Service Center at  
**724-776-4806.**

*Class size is limited to 50 participants.*

**Cranberry Township  
supports backyard  
composting!**



**CRANBERRY TOWNSHIP built for you.**  
Reduce solid waste • Help the environment • Turn waste to soil



# Composting Program for Employees





## **Public Involvement / Participation**

# **Public Meeting To Solicit Public Involvement**

# Partnership Program with Haine Middle School

## PROTECTING OUR WATERSHED

- BY: HAINE MIDDLE SCHOOL  
PURPOSE STUDENTS

### HMS Green Team



# Public Presentation with Haine Middle School





# Stencil Program with Haine Middle School





# Stencil Program with Haine Middle School

May 23 2016 Stencils Program with Haine Middle School Students



Stencil #1 – Don't Dump Waste Leads to River

Stencil #2 – Don't Dump Waste It Kills Wildlife

Stencil #3 – Only Rain Down The Drain

Stencil #4 – No Trash Just Rain



Stencil #5 – No Dumping Drains To River

Stencil #6 – Don't Dump Drains To River

Stencil #7 – Dump No Waste Leads To Creek

Stencil #8 – Dump No Waste Let Our Fish Swim



Morning Class

Afternoon Class



# Stencil Program with Haine Middle School



724 | 776 | 4806  
724 | 776 | 4420  
CranberryTownship.org

## Haine Middle School Stencil Program - Monday May 23, 2016

### Morning Session

- 8:30 Place Signs at entrance into the BelleVue Park Development
- 8:45 Arrive at Haine Middle School (Road in front of Building)
- 9:00 Students and Parents Exit Building for Stencil Training
- Training Class Split into two groups
- 9:15 Leave Haine Middle School and walk over to BelleVue Park
- 9:20 to 11:00 Perform Stenciling on roads at inlets identified on handouts
- 11:00 Return to Haine Middle School

### Afternoon Session

- 12:00 Place Signs at entrance into the Creekwood Commons Development
- 12:15 Arrive at Haine Middle School (Road in front of Building)
- 12:30 Students and Parents Exit Building for Stencil Training
- Training Class Split into two groups
- 12:45 Leave Haine Middle School and walk over to Creekwood Commons
- 12:45 to 2:30 Perform Stenciling on roads at inlets identified on handouts
- 2:30 Return to Haine Middle School

### Groups of 5 Tasks

1. Paint Carrier (Paints first then Stencil)
2. Stencil Carrier
3. Backstop Carrier
4. Broom Carrier
5. Flag & Cone Carrier

Adult Carriers Garbage Bag & Paper Towels

### Groups of 6 Tasks

1. Paint Carrier (Paints First then Stencil)
2. Stencil Carrier
3. Backstop Carrier
4. Broom Carrier
5. Cone Carrier
6. Flag Carrier

Adult Carriers Garbage Bag & Paper Towels

2525 Rochester Road | Suite 400 | Cranberry Township | PA | 16066

## How to Stencil Step 1



Use a wire brush or whisk broom to sweep dirt away from the stencil area.

## Step 2



Position stencil next to the storm drain inlet where message will be most visible. Avoid areas where dirt and leaves will collect and cover the message.

## Step 3



Consider using a cardboard box, cut open to form a border around the stencil to protect against overspray.

## Step 4



Spray paint the message. Two light coats are better than a thick single coat. Stenciled messages last for approximately two years on a paved surface.

## Step 5



While some team members are stenciling, have others visit local residents or businesses to hand out fact sheets or door hangers explaining where the storm drains go.

## Step 6



Clean up. Place stencils in a cardboard folder for transportation. Open folders and lay flat in the sun to dry. When paint is dry store the stencils in their folder where they will be ready for future use for your next stencil day.



# Stencil Program with Haine Middle School

Cranberry Township / Haine Middle School Stencil Program (May 23, 2016)

Performed at the BelleVue Park 9:00 am to 11:30





# Stencil Program with Haine Middle School

Cranberry Township / Haine Middle School Stencil Program (May 23, 2016)

Performed at the Creekwood 12:30 am to 3:00

57 Inlets



Cranberry Township / Haine Middle School Stencil Program (May 23, 2016)

Performed at the Creekwood Commons 12:30 am to 3:00

29 - Inlets





# Stencil Program with Haine Middle School



# Environmental Partners

Youtube Video from Cranberry Township Website

# Haine Middle School Students – Work with MS4 Program

## Butler County Conservation District

### 2014 Outstanding Youth Award





# STEM FEM – Storm Drain Stenciling Event

Science, Technology , Engineering and Math (STEM)

STORM DRAIN STENCILLING EVENT 5/12/2015

GRAHAM PARK DRIVE





# Home Owners Association

- H.O.A. Neighborhood Forum
  - 63 Neighborhood Developments
- Send out Annual Notice
  - Inspect and Maintain Stormwater Management Facilities

# Coffee with the Township Manager



## Manager's Coffee

Thursday, April 21

Graham Park Maintenance Bldg., 7 pm

What is stormwater runoff? Why does it matter?  
What is Cranberry Township doing? We'll learn what every homeowner can do to prevent stormwater runoff pollution, how runoff affects our sewer system and what Cranberry has planned for the future.

RSVPs are appreciated, 724-776-4806 x 1089



# Participate in Workshop Training

## SPC Water Resource Center

About WRC | Geography | Policy & Regulations | Regional Information & Technical Resources | Educational Materials

Educational Materials



### Municipal Separate Storm Sewer System

#### Upcoming Trainings

##### A Local Perspective on Addressing MS4 Requirements

The WRC is pleased to announce the upcoming free workshop.

Ever wonder how other local governments in Western Pennsylvania are managing their Municipal Separate Storm Sewer System (MS4) Program? Tim Schutzman, Waterworks Coordinator, highlights what Cranberry Township, Butler County, is doing to meet their MS4 permit requirements.

**Tuesday, August 23, 2016**  
Cranberry Township Municipal Center  
Council Chambers  
2525 Rochester Road  
Cranberry Township, PA 16006

##### Agenda

- Introduction on Township
- How Cranberry Township Addresses the Six Minimum Control Measure (MCM) Requirements
  - Public Education and Outreach on Stormwater Impacts
  - Public Involvement / Participation
  - Illicit Discharge Detection and Elimination
  - Construction Site Stormwater Runoff Control
  - Post Construction Stormwater Management in New and Re-Development Activities
  - Pollution Prevention / Good Housekeeping
- Future Permit Requirement Questions

The workshop will be held from 9 am – noon; registration will begin at 8:30 am.

To register, visit <https://www.surveymonkey.com/r/7N2QKGG> or contact Linda Duffy at 412-391-5590 ext. 324.

# Additional Information - DEP MS4 Resources

## When It Rains, It Drains

**An Overview of  
Our Community's New  
Storm Water  
Management Program**

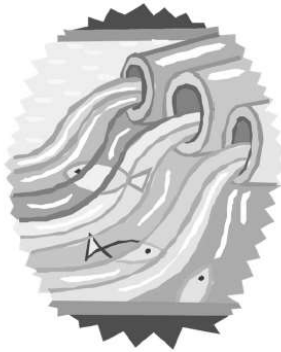




# Additional Information – DEP MS4 Resources

This booklet belongs to: \_\_\_\_\_

## The Spring Creek Stormwater Activity Book

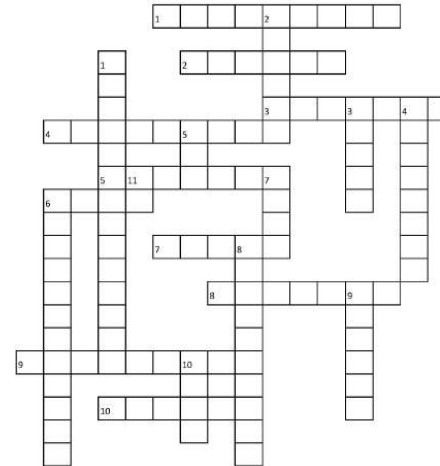


An activity booklet designed to teach children about water resources  
and stormwater pollution

Created by the MS4 Partners  
College, Ferguson, Harris, and Patton Townships;  
Penn State; and State College Borough

### Crossword Puzzle

Everything we do is interconnected and can affect something else. Complete the crossword puzzle below. Hint, many of the words can be found in this activity book.



#### Across

- 1) A local University
- 2) A rain \_\_\_\_\_, for storing water
- 3) A Spring Creek Mountain
- 4) A town at the mouth of the watershed
- 5) A practice that helps the environment
- 6) A form of precipitation
- 7) A landscape term describing sinkholes and closed depressions
- 8) A local municipality (2 will work)
- 9) An under drained valley of Spring Creek
- 10) A town at the base of 3 across

#### Down

- 1) A large local wetland
- 2) Where water comes out of the ground
- 3) A Spring Creek fish
- 4) Pollution not from a single spot or "point"
- 5) Something you do at a store
- 6) A Spring Creek tributary
- 7) A compass direction
- 8) What this activity book is about
- 9) Where the community gets its drinking water
- 10) A type of bird found around marshes
- 11) Something you say when you touch something slimy

## Additional Information – DEP MS4 Resources

- EPA Resources (Fact Sheets, Guidance, Training and Webcasts)

<http://www.epa.gov/npdes/stormwater-discharges-municipal-sources#resources>

- DEP Resources (Template, PowerPoint, Stenciling and Landscape Manual)

<http://www.dep.pa.gov/Business/Water/PointNonPointMgmt/StormwaterMgmt/Stormwater/Pages/MS4-Resources.aspx#.VsNAPaMo6Uk>

# Questions

