

Welcome Home

CRANBERRY TOWNSHIP

Pennsylvania



NEW RESIDENT GUIDE

**TIPS FOR
GETTING SETTLED
& STARTED**

**CONNECTING TO
TOWNSHIP
SERVICES**

**THINGS TO DO
AROUND
TOWN**



WELCOME



On behalf of the Board of Supervisors and staff, I am delighted you've chosen to make your home in Cranberry. As a Township resident, you have become part of one of the most exciting, forward-thinking, and successful communities in the mid-Atlantic region.

The Cranberry Township New Resident Guide will help orient you to your new community. Between the Guide and our website, CranberryTownship.org, you will be able to quickly learn about our essential services, resources, state-of-the-art facilities, and policies.

I encourage you to sign up for our Alert system, which will notify you by email or text message about program cancellations, weather alerts, schedule changes, traffic alerts, and public safety advisories. Scan the QR code below to sign up.

I cordially invite you to stop by the Township Municipal Center at 2525 Rochester Road to visit our administrative offices, library, gym, preschool, and the newly designed Armstrong Great Lawn. Feel free to call us at 724-776-4806 if we can be of assistance.

Welcome home!

Sincerely,
Daniel Santoro
Township Manager

*Scan to sign up
for Alerts!*





CRANBERRY
• TOWNSHIP •

All About **CRANBERRY**

Cranberry Township is an ideal place to live, work, and play. With easy access to hundreds of businesses and recreation options, Cranberry is a family-oriented community with a forward-thinking outlook and a positive energy that's reflected in its people, businesses, and green spaces.

Cranberry includes just over 23 square miles and a population of more than 34,000 – up from less than 15,000 in 1990. One reason for that steady growth is its prime location. Situated at the intersection of Interstate 79 and the Pennsylvania Turnpike, Cranberry is easily accessible from anywhere in the region and approximately 20 miles from Pittsburgh.

Understanding Our **GOVERNMENT**

The Township is governed by a Board of Supervisors, five elected officials each serving a six-year term.

Meetings are open to the public and are held twice a month. The Board appoints a Township Manager to implement policy decisions and serve as the chief of staff for all the Township departments.

CRANBERRY TOWNSHIP BOARD OF SUPERVISORS

Bruce Hezlep, Chairman
Mike Manipole, Vice Chairman
Bruce Mazzoni
Karen Newpol
John Skorupan

TOWNSHIP MANAGER

Dan Santoro

ASSISTANT TOWNSHIP MANAGERS

Kyle Beidler
Ryan Eggleston
Mary Soroka



TOWNSHIP CONTACT INFORMATION

ADMINISTRATION: 724-776-4806 x 2300

Manager's Office, Human Resources,
Information Technology, Communications

CUSTOMER SERVICE: 724-776-4806, OPTION 3

Township services, questions, reservations,
Parks & Recreation Customer Service

FINANCE DEPARTMENT: 724-776-4806, x 2500

Management of Township finances

CRANBERRY HIGHLANDS GOLF COURSE: 724-776-7372

18 Hole, Par 70 Public Golf Course, Special Event &
Wedding Venue

CRANBERRY TOWNSHIP POLICE: 724-776-5180 (NON-EMERGENCY)

Dial 911 for ALL emergency services

FIRE & EMERGENCY SERVICES: 724-776-6130 (NON-EMERGENCY)

Management of volunteer fire company and EMS

**SCAN THE QR CODE TO
FILL OUT A TOWNSHIP
CONTACT US FORM**



Please complete
this form to submit
questions or
concerns on subjects
directly related to
Cranberry Township.

**FOR ALL EMERGENCIES,
PLEASE DIAL 911.**

New Resident CHECKLIST

✓ SEWER, WATER, & TRASH

Apply online at CranberryTownship.org/ServiceApplication or call Customer Service at 724-776-4806. Residents are billed for these services in one convenient, monthly bill. Learn more on pages 6-7 of this Guide.

✓ GAS & ELECTRIC SUPPLIERS

In PA, residents may choose the company that provides their home natural gas and electricity. Supplier lists may be found at PaGasSwitch.com and PaPowerSwitch.com

✓ DOG LICENSE

Dogs over 3 months of age must be licensed in Pennsylvania. Annual dog licenses may be purchased online at doglicenses.us/PA/Butler. Lifetime licenses for microchipped dogs are available in the Butler County Treasurer's Office, in person or by mail. Learn more at butlercountypa.gov/368/Dog-Licenses.

✓ DRIVERS LICENSE

Out-of-state driver's licenses must be converted within 60 days of establishing residency. For more information, visit the Pennsylvania Department of Motor Vehicles website dmv.pa.gov.

✓ VOTER REGISTRATION

In order to vote, residents must be registered with the Butler County Bureau of Elections: butlercountypa.gov/214/Voting or call 724-284-5308. For more information, visit CranberryTownship.org/Vote or see page 10 of this Guide.

✓ SCHOOL ENROLLMENT

Cranberry Township is in the Seneca Valley School District, 124 Seneca School Road, Harmony, PA, 16037. Call 724-452-6040 or visit svsd.net. See page 10 for more information on schools.

✓ MOTOR VEHICLE REGISTRATION

New residents must apply for a title and registration for their vehicle within 20 days of residency. Annual vehicle registration and inspection are required in PA. Visit dmv.pa.gov to learn more.

✓ PHONE, CABLE, & INTERNET

Every home in Cranberry Township has all three services available. See page 10 for more information.

✓ MAILING ADDRESS CHANGE

Residents can file for a change of address at the Cranberry Township Post Office, located at 240 Executive Drive, or online at moversguide.usps.com.

✓ LIBRARY CARDS

A library card is free to Cranberry Township, Butler County residents with proper identification.

Follow Us On SOCIAL

WEBSITES:

CranberryTownship.org
Cranberry4FUN.com
CranberryHighlands.com
CranberryLibrary.org

E-NEWS:

Cranberry Central
 Cranberry Highlands eClub



MANAGER'S BLOG:

CranberryTownship.org/Blog

CONTACT US:

CranberryTownship.org/ContactUs

NEXTDOOR:

Cranberry Township

INSTAGRAM:

@cranberrytwp; @ctccchest

FACEBOOK:

Cranberry Township
 Cranberry Parks & Recreation
 Cranberry Highlands Golf Course
 Cranberry Police Department
 Cranberry Waterpark
 Cranberry Township Volunteer Fire Company
 Cranberry Township Community Chest (CTCC)

YOUTUBE: cranberrytownship

X (FORMERLY TWITTER):

@cranberry_twp; @CranHighlands

LINKEDIN: Cranberry Township

ALERTS:

CranberryTownship.org/Connect



TOWNSHIP ALERT SYSTEM

Sign up to receive Township text and email alerts

About the TOWNSHIP

CUSTOMER SERVICE

Cranberry Township Customer Service serves as the primary interface between the public and various departments of the Township, answering questions, scheduling services and facilities, registering families for programs, and much more.

CRANBERRY TOWNSHIP CUSTOMER SERVICE

2525 Rochester Road, Suite 400
724-776-4806, option 3

BUILDING AND ZONING CODES

Many residential construction projects require building permits, including additions, decks, and swimming pools. For information on residential building/zoning permits, visit CranberryTownship.org/BuildingCodes or call Cranberry Planning and Development Services, 724-776-4806 x2800.

PUBLIC WORKS

The Department of Public Works efficiently plans, designs, builds, and maintains the public infrastructure of Cranberry Township and provides the residents, businesses, and visitors with high-quality, efficient, safe, and responsive services. Public Works provides oversight and asset management operations including installation and maintenance in four divisions: Fleet & Street, Grounds, Traffic, and Facilities.

WINTER MAINTENANCE

Throughout the winter, Cranberry's Public Works Department plows and salts roads that are owned by the Township. PennDOT is responsible for clearing state-owned roads in Cranberry. Property owners are responsible for finding contractors to clear privately owned roads, and homeowners are responsible for clearing sidewalks in front of their residences. Visit CranberryTownship.org/WinterRoadCare for more information on snow removal.

SOLICITATION

Anyone wishing to sell goods door-to-door is required to apply for a permit through the Township. Individuals going door-to-door not selling anything are not required to have a permit. Residents may register online for the Do Not Knock list (DNK) to avoid door-to-door sales at CranberryTownship.org/DoNotKnock.

Visit the Cranberry Township
Municipal Center

2525 ROCHESTER ROAD
CRANBERRY TOWNSHIP, PA 16066



EMERGENCY SERVICES

CRANBERRY TOWNSHIP POLICE

2525 Rochester Road, Suite 500
724-776-5180 (Non-emergency calls only)

The Cranberry Township Police Department maintains a safe and secure environment for residents and visitors. Visit CranberryTownship.org/Police for additional information.

CRANBERRY TOWNSHIP EMS

20727 Route 19, Suite 51
724-776-4480 (Non-emergency calls only)

Cranberry EMS provides emergency and non-emergency patient care, patient transportation, and community-oriented programs. Subscriptions are available to eliminate costly co-payments. Visit CranberryTownshipEMS.org

FIRE & EMERGENCY SERVICES

20727 Route 19, Suite 21
724-776-6130 (Non-emergency calls only)

Cranberry Fire & Emergency Services manages the volunteer fire company and emergency medical services in the community.

CRANBERRY TOWNSHIP VOLUNTEER FIRE COMPANY

CTVFC provides fire and rescue services, as well as safety education. For more information or to become a volunteer firefighter, visit CTVFC21.org.

PARK FIRE STATION

20727 Route 19, Suite 21
724-776-6130 (Non-emergency calls only)

HAINE FIRE STATION

1629 Haine School Road
724-776-1196 (Non-emergency calls only)

**FOR ALL EMERGENCIES, PLEASE
DIAL 911.**

Sewer, Water, & Trash [SERVICE]

Visit CranberryTownship.org/TrashSchedule for a list of collection days by streets.

APPLYING FOR SERVICE

Apply for service online or call Customer Service: 724-776-4806, Monday-Thursday, 7:30 AM - 8:30 PM, Friday, 7:30 AM - 5:00 PM. Please allow at least one business day prior to the start of service for water, sewer, trash, recycling, and yard waste collection or to set up a new utilities account.

New customers can select cart sizes - 35, 64, or 96 gallons. The monthly rate depends on the size of the garbage cart (GRAY-TOP). Recycling (BLUE) and yard waste (GREEN) are included at no additional charge.

Billing is on a monthly basis. Statements are mailed the first week of the month and due on the last business day of each month.

Sewer and water rates are charged on a per-gallon basis and charges are based on water consumption as determined by a meter reading.

TRASH AND RECYCLING COLLECTION

Weekly curbside trash and recycling collection services are provided to the majority of homes in Cranberry. Yard waste is also collected weekly during seasonal periods and two weeks are set aside in January for live Christmas tree collection.

NO COLLECTION: New Year's Day, Memorial Day, Independence Day, Labor Day, Thanksgiving Day, and Christmas Day. **There is no schedule change if the holiday falls on a weekend,** regardless of when the holiday is observed.

If your collection day is:

- On or after a weekday holiday, your collection will be 1 day later.
- Before a weekday holiday, there will be no change in your collection.

TAGS FOR EXTRA ITEMS: Our program uses prepaid stickers for the collection of extra items (*outside of the carts*) on regular collection days. Purchase online at CranberryTownship.org/CollectionStickers or during business hours in Customer Service or Cranberry Highlands Golf Course.

HAZARDOUS & E-WASTE COLLECTION

Four times per year, Cranberry Township and Noble Environmental host Household Hazardous Waste (HHW) events to collect unused household or electronic products. Reservations are required and fees apply. Visit CranberryTownship.org/HHW to learn more.

GENERAL GUIDELINES

- Place carts at the curb the night before collection day, facing the street at least 2 ft. apart and at least 5 ft. from mailboxes or other free-standing objects. Arrows on cart lids show which side should face the street. Please retrieve carts by the end of the day.
- Bag all trash before placing in the GRAY-TOP carts. (No bags in BLUE or GREEN-TOP carts.)
- Very large items, e-waste and household hazardous waste are not accepted.
- Don't overload your cart and lids must be closed. (Heavy loads will cause the mechanical arm to fail.)



2025 CRANBERRY TOWNSHIP WASTE CALENDAR

JANUARY

S	M	T	W	T	F	S
5	6	7	8	9	10	11
12	13	14	15	16	17	18
19	20	21	22	23	24	25
26	27	28	29	30	31	

FEBRUARY

S	M	T	W	T	F	S
						1
2	3	4	5	6	7	8
9	10	11	12	13	14	15
16	17	18	19	20	21	22
23	24	25	26	27	28	

MARCH

S	M	T	W	T	F	S
						1
2	3	4	5	6	7	8
9	10	11	12	13	14	15
16	17	18	19	20	21	22
23	24	25	26	27	28	29
30	31					

APRIL

S	M	T	W	T	F	S
6	7	8	9	10	11	12
13	14	15	16	17	18	19
20	21	22	23	24	25	26
27	28	29	30			

MAY

S	M	T	W	T	F	S
4	5	6	7	8	9	10
11	12	13	14	15	16	17
18	19	20	21	22	23	24
25	26	27	28	29	30	31

JUNE

S	M	T	W	T	F	S
1	2	3	4	5	6	7
8	9	10	11	12	13	14
15	16	17	18	19	20	21
22	23	24	25	26	27	28
29	30					

JULY

S	M	T	W	T	F	S
6	7	8	9	10	11	12
13	14	15	16	17	18	19
20	21	22	23	24	25	26
27	28	29	30	31		

AUGUST

S	M	T	W	T	F	S
3	4	5	6	7	8	9
10	11	12	13	14	15	16
17	18	19	20	21	22	23
24	25	26	27	28	29	30
31						

SEPTEMBER

S	M	T	W	T	F	S
7	8	9	10	11	12	13
14	15	16	17	18	19	20
21	22	23	24	25	26	27
28	29	30				

OCTOBER

S	M	T	W	T	F	S
5	6	7	8	9	10	11
12	13	14	15	16	17	18
19	20	21	22	23	24	25
26	27	28	29	30	31	

NOVEMBER

S	M	T	W	T	F	S
2	3	4	5	6	7	8
9	10	11	12	13	14	15
16	17	18	19	20	21	22
23	24	25	26	27	28	29
30						

DECEMBER

S	M	T	W	T	F	S
7	8	9	10	11	12	13
14	15	16	17	18	19	20
21	22	23	24	25	26	27
28	29	30	31			



1 DAY DELAY
(Due to weekday holiday)

LIVE TREE COLLECTION
January 6 - 17

YARD WASTE COLLECTION
March 31 - December 12

[MORE]

Sewer, Water, & Trash

SEWER, WATER AND TRASH BILL PAYMENT OPTIONS

Bills are mailed the first week of the month and are due by the last business day. A 10% penalty fee will be assessed if a bill is not paid by the due date.

- **Pay by Mail:** Include the statement stub and write your account number in the memo field on your check. Mail to Cranberry Township, P.O. Box 6075, Hermitage, PA 16148-1075. Returned checks are subject to a \$30 fee. Do not mail cash.
- **Pay in Person:** Pay by cash, check, or money order by visiting our Customer Service Office in the Cranberry Township Municipal Center, 2525 Rochester Rd., Cranberry Township, PA 16066. Payments are accepted in person Monday - Thursday, 7:30 AM - 8:30 PM, and Fridays, 7:30 AM - 5:00 PM, except holidays. Returned checks are subject to a \$30 fee.
- **Township Office Drop Box:** Payments may be placed in the payment drop box located within the Municipal Center near the Customer Service Office. Payments placed in the box outside of operating hours will be credited on the following business day. Returned checks are subject to a \$30 fee.
- **Pay Online:** Credit card and eCheck payments are accepted online only. Convenience fees, charged by the payment service, are applied. Please allow up to 48 hours processing time to post the payment to your account.
- **Electronic Payment From Your Bank:** Set up the payment through your financial institution's online banking system. Use your 8-digit account number in the payee account field provided by the bank. Remember to update this account number if you move from one address to another within Cranberry Township.

WATER QUALITY REPORT

Cranberry Township's commitment to ensuring clean water is as clear as the water itself. Read the Annual Water Quality Report online at CranberryTownship.org/WaterReport.

RECYCLING CARDBOARD

A cardboard compactor capable of handling large volumes of cardboard waste is available for residential use in the back parking lot of the Municipal Center.

- Break down all boxes before loading
- No plastic foam packing material
- No trash allowed
- A 24/7 hour surveillance camera monitors the site

HARD TO RECYCLE ITEMS

TC Recycling LLC - 120 Hutchman Road, Mars, PA

Open to the public, accepting trash and hard-to-recycle items. Fees apply. A container for recycling is also available for local residents' use at no charge. To view more information including a complete list of accepted items, visit tcrecycling.com or call 724-625-9000.

RETIRE OLD GLORY

The "Retire Old Glory" flag bin is located in the Municipal Center near the Township administration office.

Avoid high water bills! Set alerts and get notified when water usage exceeds certain levels.

SAVE TIME & MONEY- GO PAPERLESS!



EMAIL-BILL

Get your monthly bill by email. Pay it any way you choose. Visit cranberrytownship.org/billpay.



AUTOMATIC BILL PAYMENT

AutoPay lets Cranberry make an automatic withdrawal from your bank account.



EMAIL-BILL PLUS AUTOMATIC PAYMENT

Choose both and get a \$1 credit every month.



MONITOR WATER USAGE AND SET ALERTS

Avoid high payments by monitoring and controlling water usage with the free Customer Portal. The tool is designed to give residents the option to better manage their water consumption and view usage on a daily and weekly basis. Customers can sign up to receive alerts when water usage exceeds certain levels. To access the portal, visit CranberryTownship.org/CustomerPortal. For additional information or help with setting up your account, contact Customer Service at 724-776-4806, option 3.

SPORTS LEAGUES & PROGRAMS

Cranberry's award-winning Parks and Recreation Department offers fun and engaging programming for all ages. Visit our website to view the current program guide and registration info: CranberryTownship.org/Recreation.

SPECIAL EVENTS

Celebrate with Cranberry Township! Follow Cranberry Township on social media (page 4) to learn about upcoming events: CranberryTownship.org/SpecialEvents.

COMMUNITY WATERPARK

Open daily Memorial Day - Labor Day, the Cranberry Township Waterpark provides a safe and fun swimming experience for all ages, including incredible amenities, swim lessons, private pool and party rentals, and more. Residents can save on daily admission prices by purchasing a Waterpark membership! View pricing, member perks, and more online: CranberryTownship.org/Waterpark.

CRANBERRY HIGHLANDS GOLF COURSE

Cranberry Highlands is a par 70 public golf course and clubhouse, open mid-March through mid-November. The 160-acre property is also available for weddings, golf outings, business meetings and other private events: CranberryHighlands.com.

CTCC COMMUNITY DAYS

CTCC Community Days, held annually in July at Community Park, features three days of carnival rides, activities, food, live music, vendor booths, family fun, and more: YourCTCC.org/CommunityDays.

KIDS CLUB

This before-and-after-school program is a solid solution for working parents. It offers fun, supervised activities, homework help, and transportation between the Municipal Center and Seneca Valley schools: CranberryTownship.org/KidsClub.

EARLY LEARNING CENTER

The Cranberry Township Early Learning Center is a licensed, accredited preschool for ages 3-5 that focuses on developing students' social/environmental skills, cognitive abilities, physical skills, and language: CranberryTownship.org/ELC.

ROTARY DOG PARK

The Cranberry Township Rotary Dog Park located at Community Park is a four-acre, fenced space for large and small dogs: CranberryTownship.org/DogPark.

SHELTER RENTALS

With eight shelters available for rent, now is the time to plan parties in our parks. Headed to the pool? Reserve the Sun Decks, Party Room, or entire facility: CranberryTownship.org/ShelterRentals.

THIN



Early Learning Center



Community Days



Cranberry Highlands

INGS TO DO

Around Town

ARMSTRONG GREAT LAWN

The new Armstrong Great Lawn is an expansion of the Municipal Center that creates a beautiful space for the community to gather. The Lawn features functional amenities like a Reading Garden and serves as the backdrop for many events: YourCTCC.org/GreatLawn.

CRANBERRY PUBLIC LIBRARY

The Cranberry Public Library offers year-round educational programs, clubs, and classes for all ages. It houses more than 90,000 catalogued materials, a children's library, meeting rooms, a Makerspace, and more: CranberryLibrary.org.

MAKERSPACE

The Forge Makerspace at the Cranberry Public Library is a collaborative workspace that brings together crafters and creators. Sign up for a class or private appointment online: CranberryLibrary.org/Makerspace.

COMMUNITY LEADERSHIP INSTITUTE

The Community Leadership Institute of Cranberry is a free leadership course exclusive to Township residents. The sessions take a behind-the-scenes look at the interworkings of Township operations: CranberryTownship.org/CLIC.

BLOCK PARTY & BUSINESS TRAILER

Reserve the Block Party or Business Trailer for backyard parties, business gatherings, or any outdoor celebration. Trailers come equipped with tables, chairs, and more. Book a party trailer online: CranberryTownship.org/BlockParty.

BUSINESS DIRECTORY

Browse the Cranberry Township Business Directory featuring new and current businesses and information on what's coming next: CranberryTownship.org/Biz411.

VOLUNTEER CRANBERRY

Volunteer Cranberry connects dedicated volunteers with opportunities to serve the community and beyond: CranberryTownship.org/Volunteer.



Important INFORMATION



EDUCATION

PUBLIC SCHOOL

Cranberry Township is in the Seneca Valley School District, which also includes Forward, Jackson, and Lancaster townships and Callery, Evans City, Harmony, Seven Fields, and Zelienople boroughs. Several SV schools are located in Cranberry, including Rowan Elementary, Haine Elementary and Middle School, and Ehrman Crest Elementary and Middle School.

Seneca Valley School District

124 Seneca School Road
Harmony, PA 16037
724-452-6040; SVSD.net

PAROCHIAL/ PRIVATE SCHOOLS

St. Kilian Parish School, K-8

724-625-1665; saintkilian.org

North Catholic High School, Grades 9-12

412-321-4823; northcatholic.org

HOSPITALS/ URGENT CARE

Absolute Primary Care - UPMC

20630 Rte 19 #101, Cranberry Twp.
724-779-2273; providers.upmc.com

Cranberry Township VA Clinic

900 Commonwealth Drive, Cranberry Twp.
724-742-3500; butler.va.gov/locations/Cranberry_Township_VA_Outpatient_Clinic.asp

Falcon Urgent Care

1241 Freedom Road, Cranberry Twp.
724-235-6000; urgentcarecranberry.com

MinuteClinic

1181 Freedom Road, Cranberry Twp.
724-742-1888; cvs.com/minuteclinic

UPMC Children's Express Care

8000 Cranberry Springs Drive,
Cranberry Twp.
724-720-3098; chp.edu/locations/express-care-cranberry

UPMC Passavant - Cranberry

1 St. Francis Way, Cranberry Twp.
724-772-5300; upmc.com/locations/hospitals/passavant

SENIOR SERVICES

CRANBERRY SENIOR CENTER

Located in the Municipal Center, the Senior Center is open year round. It is operated by the Butler County Area Agency on Aging, offering daily lunches Mondays, Tuesdays, Wednesdays, and Fridays, plus planned activities. For more information on the many senior services provided, visit butlercountypa.gov/292/Area-Agency-on-Aging, call 724-282-3008, or email AAAsejor@co.butler.pa.us.

CRANBERRY SENIOR CLUB

Open to Cranberry Township residents, ages 55+, this group meets at 1PM on the 2nd Tuesday of the month at the Municipal Center. The Club features activities, social opportunities, and visits to nearby points of interest. Interested? Contact Frank at fjhoffman@zoominternet.net.

BUTLER AREA RURAL TRANSIT (BART)

BART is a shared ride system transporting 60+ seniors to senior centers, medical appointments, adult day care, and other destinations within Butler County using handicapped accessible vehicles. Call 724-282-3008 to request enrollment.

BUTLER TRANSIT AUTHORITY (BTA)

BTA is a fixed route transit system that operates five local fixed routes in Butler and commuter runs between Butler and Pittsburgh. Visit butlertransitauthority.com for more information.

VOTING INFORMATION

For complete information on voting in Cranberry, poll locations, and related links, visit CranberryTownship.org/Vote. Register to vote with the Butler County Bureau of Elections. The deadline to apply to register to vote is 30 days prior to each election. For more information, visit butlercountypa.gov/214/Voting or call 724-284-5308. Polls are open from 7AM to 8 PM on Election Day.

LOCAL TAX INFORMATION

PROPERTY TAX OFFICE

The elected property tax collector office is in the Municipal Center. P.J. Lynd is responsible for collecting Cranberry Township Property Taxes, Butler County Property Taxes, and Seneca Valley School District Property Taxes, as well as the Real Estate Transfer Tax. For information, visit CranberryTownship.org/PropertyTaxOffice or call 724-776-1103.

EARNED INCOME/BUSINESS PRIVILEGE/MERCANTILE COLLECTOR

Berkheimer Tax Administrator is the appointed tax collector for Earned Income Tax, Business Privilege / Mercantile Tax, and License and Local Services Tax. For more information on taxes, visit CranberryTownship.org/LocalTaxes.

UTILITY PROVIDERS

NATURAL GAS AND ELECTRIC

In Pennsylvania, you may choose your own provider. For a list of providers, visit

- Natural Gas: PaGasSwitch.com
- Electric: PaPowerSwitch.com

CABLE, PHONE, AND INTERNET

Residents have several options for cable, internet, and phone providers.

- Armstrong: 877-277-5711
- Comcast: 888-277-1898
- Consolidated Communications: 724-443-2000
- Century Link: 1-866-906-2934
- Verizon: 1-888-546-6204

EMERGENCIES: CALL OR TEXT



9-1-1

BUTLER COUNTY SERVICE

- when you lock your keys in the car
- to report a suspicious person or vehicle
- if you witness a car accident or drunk driver
- if you wish to speak with an officer
- if you are a victim of, or witness a break-in
- to report a fire
- to report a domestic dispute
- to report a missing person
- if you witness someone littering or loitering
- when you witness people yelling or fighting
- to report a medical emergency

24/7 ASSISTANCE AVAILABLE AT CRANBERRYTOWNSHIP.ORG

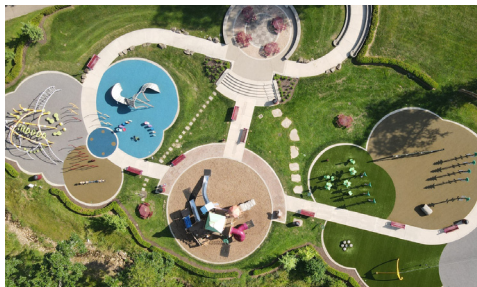
An Overview of Our FACILITIES



MUNICIPAL CENTER

2525 ROCHESTER ROAD

- Township Administration
- Parks & Recreation
- Cranberry Township Early Learning Center
- Cranberry Township Police Department
- Cranberry Public Library & Makerspace
- Armstrong Great Lawn
- Council Chambers
- Grange Hall (Senior Center)
- Gymnasium
- Tax Office
- Class/Meeting Rooms



COMMUNITY PARK

111 ERNIE MASHUDA DRIVE

- Rotary Amphitheater
- 4 Park Shelters
- Baseball/Softball Fields
- Football/Multipurpose Field
- Basketball Court
- Tennis Courts
- Kids Castle Playground
- Nature Trail
- Rotary Dog Park



NORTH BOUNDARY PARK

1171 NORTH BOUNDARY ROAD

- Community Waterpark
- Crocodile Cove Playground
- Nextier Walking Trail
- Disc Golf Course
- Veterans Memorial
- 3 Shelters
- Baseball Field
- Soccer Fields
- Wetlands & Pollinator Meadow

ALL FACILITIES ARE EQUIPPED WITH:

- Free WiFi by Armstrong
- Restrooms
- Outdoor AED
- Walking Paths



CRANBERRY HIGHLANDS GOLF COURSE

5601 FRESHCORN ROAD

- 18 hole, Par 70 course
- Golf Instruction
- Men's and Women's Locker Areas
- Audubon Pavilion & Nature Trail
- Club Fitting/Rental/Repair Services
- Clubhouse & Pro Shop
- Food & Beverage Service
- Banquet/Meeting Rooms
- Grill Room & Patio
- USGA Handicapping



UPMC PASSAVANT SPORTSPLEX AT GRAHAM PARK

260 GRAHAM PARK DRIVE

- Baseball/Softball Fields
- Soccer/Football/Lacrosse Fields
- Pickleball/Basketball/Tennis Courts
- Dek Hockey Rink
- Community Garden
- Scouting Plaza & Fishing Pond
- Brush Creek Trail
- Miracle League Field

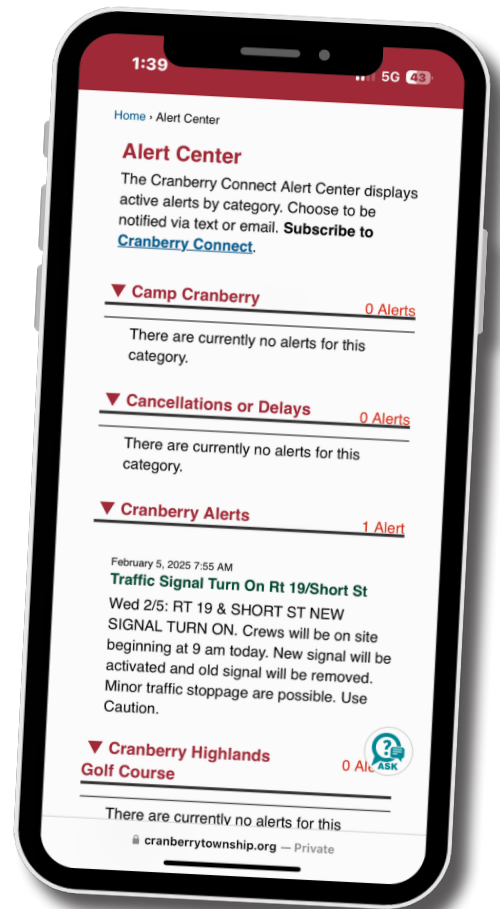


Follow Us!



nextdoor

Sign up for alerts!



WALK-IN ORTHOPAEDIC INJURY CLINIC



NOW OPEN
at UPMC Lemieux Sports Complex!

Bone, joint, and muscle injuries can happen without warning. That's why UPMC Orthopaedic Care provides convenient, walk-in access to care for patients 10 and up.

No appointments are needed — just stop in for expert evaluation and exceptional care by our team of orthopaedic specialists.

To learn more, visit **UPMC.com/OrthoClinic** or call **724-720-3000**.

Open Monday through Friday from 5 to 9 p.m.

UPMC Lemieux Sports Complex
8000 Cranberry Springs Dr.
Cranberry Township, PA 16066

UPMC | ORTHOPAEDIC CARE

Closed on all major holidays.