



THROWING AWAY AFTER THE HOLIDAY

The presents have been opened and the ornaments removed. But the pile of boxes and other remnants of the holiday remain. That's where the Township steps in. To dispose of extra trash, be sure to purchase pre-paid trash stickers prior to the holiday rush. To have a live Christmas tree disposed of, simply leave it with the trash during the first two weeks of January, and it will be collected.

For cardboard and other recyclable items, the Township's Cardboard Compactor is a fast, convenient way to recycle. Located behind the Municipal Center at 2525 Rochester Road, the commercial-strength compactor is capable of handling large volumes of residential cardboard carton waste.

The following guidelines are in place for proper usage:

- No Styrofoam or packing 'peanuts' (Place these items in your GRAY-TOP trash cart.)
- No garbage.
- If the compactor is full, do not leave boxes outside.
- A camera monitors the compactor's usage.

For questions or concerns about the Cranberry Cardboard Compactor, please visit CranberryTownship.org/CardboardCompactor or contact Jason Dailey, Director of Utilities, at 724.776.4806 x1521.



WATCHING THE WATER: CUSTOMER PORTAL OFFERS VALUABLE INFORMATION

The Township's Customer Portal makes monitoring and controlling water usage easier than ever.

The Portal is free and available on the Township website and provides real-time water usage data. Consumption is shown in increments of a gallon, compared to thousands of gallons in the previous system.

Customers can set usage limits, vacation alerts, and thresholds, which can help detect leaks.

Information on the Customer Portal, which is mobile friendly, can be found at cranberrytownship.org/customerportal.

KEEP WATER FLOWING AS WINTER WEATHER HITS

With temperatures dipping below the freezing mark, the strain on your home's pipes could lead to a frozen, flooded disaster.

To avoid these winter water woes,

- Know the location of your water meter to ensure quick shutoff in an emergency.
- Open cabinet doors under sinks and to enclosed water meters to allow air to circulate.
- Keep thermostats higher than 55 degrees.
- Disconnect garden hoses and turn off indoor valves to outside faucets.
- Insulate water lines using foam tubes or heat tape.
- If you'll be away for a few days, turn off water at the meter.
- If temperatures are below zero, let a small stream of water flow.
- To find the frozen portion, run a damp rag along the exposed pipe. The ice plug is where frost appears.
- Thaw the pipe slowly using a hair dryer. Do not use a flame or torch.
- Be careful of electric shock in areas of standing water.



CRANBERRY
• TOWNSHIP •

Customer Service: 724-776-4806
Monday - Friday, 7:30 AM - 5:00 PM
After-hours emergencies: 724-720-6464



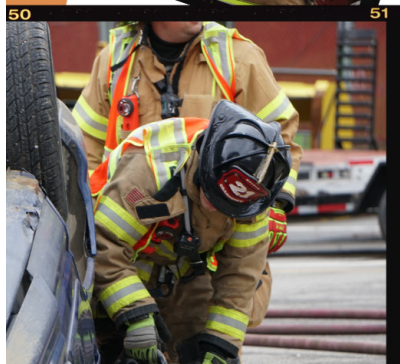
GEAR UP!

We got boots to fill!



Free Training
Scholarships
Incentive Programs
Stipend Program
Annual Physicals
Fitness Facility
Family Events
Community Pride
Trailblazing Training Facility

Cranberry resident volunteers
needed immediately!



www.CTVFC21.org
members@ctvfc21.org
724-776-6130 ext. 1800



PRESCHOOL OPEN HOUSE

A STATE CERTIFIED LEARNING CENTER



MEET OUR TEACHERS!
LEARN ABOUT OUR PROGRAMS!
EXPLORE THE CLASSROOMS!
**ASK ABOUT OUR SANITATION
PROTOCOLS!**

REGISTER YOUR CHILD & BE ENTERED TO WIN A GIFT CARD!

Thursday, February 17, 2022 | 5pm - 7pm
Cranberry Township Municipal Center
2525 Rochester Road, Suite 600


CRANBERRY TOWNSHIP
EARLY LEARNING CENTER
A Parks & Recreation Program
724-779-4386