

# Cranberry SUMMER 2021 **TODAY**

**CENTER STAGE**

**+ COMMUNITY  
UPDATES**



**CRANBERRY**  
• TOWNSHIP •





**JUL. 30**



**AUG. 4**



**AUG. 11**



**AUG. 18**

**RAYA  
AND  
THE LAST DRAGON**

**The  
Karate Kid**

**THE  
PRINCESS  
AND THE  
FROG**

**BACK  
TO THE FUTURE**

Bring your blankets and comfy chairs to the Rotary Amphitheater at Community Park. FREE movies will start at dusk around 8:30.

*Now Open!*

**Cranberry Township  
Farmers Market**

**Every Friday  
3:00 - 7:00 p.m.  
Municipal Center**

*June - October*

For sponsorship opportunities, visit  
[CranberryTownship.org/FarmersMarket](http://CranberryTownship.org/FarmersMarket)

*Spaces are limited!*

**Fresh  
Produce**

**Your Logo Here**

**Farmers  
Market**







## Working Together to Build a Better Community

### *Cranberry Township Community Chest*

Every dollar donated to CTCC stays in the community.

Thanks to our tremendous supporters, we've invested millions of dollars into the region through Community Days, the Project of the Year, and grants to local nonprofits. Your support keeps the community vibrant and thriving.

*Donations of  
any size make a  
difference.*

Paypal Donation  
Sewer/Water Bill  
United Way  
Amazon Smile  
Community Days  
Project of the Year  
Endowment

Donate Today at [YourCTCC.org](http://YourCTCC.org)



@CTCChest





# CONTENTS

CRANBERRY TODAY  
Summer 2021



6

## FEATURE

- 6 Parks Future
- 8 Parks and Facilities
- 9 Miracle League Returns
- 10 Park Maintenance

## PERSPECTIVE

- 11 Supervisor's Commentary

## UPDATE

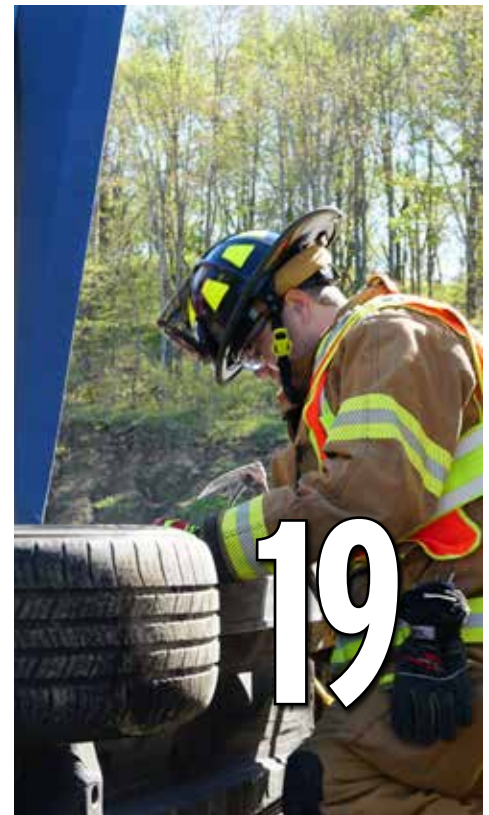
- 12 Cranberry Briefs
- 13 Infiltration and Inflow/  
Recycling 101
- 14 Roundabouts
- 16 MSA Thruway

## SAFETY

- 17 EMS Subscriptions
- 18 Police Partnership
- 19 Fire Training

## BUSINESS

- 20 Armina Stone
- 21 Community Park Storage
- 22 Recon Brewery
- 23 Camp Bow Wow
- 24 PAAS
- 25 Business Briefs/ Now Open



19





## LIVING

- 26 At Home: Bill Billeter
- 27 Cranberry Cares: Lions Club
- 28 Library Makerspace
- 29 Dog Access
- 30 Golf Course Maintenance
- 31 Seneca Valley Fundraiser
- 32 In the Know
- 33 It's Happening
- 34 CTCC Community Days

## CONNECT



# ON THE COVER



*Eli Peel, left, as Malvolio, and Anna Byers, as Feste, perform during Seneca Valley High School's presentation of "Twelfth Night," the first performance on the new stage. It kicked off a summer of fun for eager residents and performers alike.*



### CRANBERRY TOWNSHIP BOARD OF SUPERVISORS

Dick Hadley  
Bruce Hezlep  
Mike Manipole  
Bruce Mazzoni  
John Skorupan

### TOWNSHIP MANAGER Dan Santoro

**CranberryTODAY** is published quarterly by the Cranberry Township Communications Team on behalf of the Board of Supervisors and the Township Manager.

Online issues are available at  
***CranberryTownship.org/CranberryToday***

### Communications Team

Judi Boren  
Tina Fedko  
J.W. Johnson  
Cindy Marzock  
Jerraya Mason  
Audrey Rattay



# RECREATION PLAN

*Not Going in 'PARK' Anytime Soon*

What started as a plot of green space nearly 60 years ago has blossomed into hundreds of acres full of recreation and relaxation activities.

And when it comes to Cranberry's parks system, there's no relaxing anytime soon for Township leaders.

In fact, they're in the process of looking ahead at the next several decades to determine new projects and expansion opportunities. While that process is no walk in the park, it's one that will keep Cranberry's pristine parks viable for years to come

## Planning Ahead

While long-term matters like infrastructure and business development are priorities for many in the community, the concept of parks is the most consistently mentioned focus from residents.

A look at the Cranberry Plan indicates the community's desire to, "become a community with indoor and outdoor recreational opportunities and broader offerings ... to meet the evolving needs

of a diverse community."

With those marching orders in mind, the Board of Supervisors have guided continued progress since the mid-90s. That includes two new parks in North Boundary and Graham and the amenities within them. In recent years, expansion and upgrades haven't slowed as items have been crossed off the Comprehensive Parks and Recreation Master Plan.

Last updated in 2010, that plan will soon be revisited to determine what needs lie ahead.

"The Plan will help guide projects for the next decade," said Township Manager Dan Santoro, adding the projects and the Plan itself will hopefully be funded through Department of Conservation and Natural Resources grants.

## Head North

While the contents of that plan are determined, there's already movement on expansion in Community Park.

That includes a focus on Community Park

North, which currently houses the Rotary Dog Park and several fields. Introduced in 2019, the expansion plans coincided with the acquisition of more than 15 acres near the Public Works Operations Center. Relocation and renovation of that facility, as well as the Public Safety Training Center, would make way for an expanded dog park on the existing multipurpose fields.

That park would be larger and offer a shaded, wooded area for pets and owners alike.

"It's the next step in making Cranberry more dog friendly," said Pete Geis, Director of Parks & Recreation.

The existing Dog Park would be converted into new multi-purpose fields. Township officials recently applied for DCNR funding to cover the cost of earthwork and stream relocation associated with the project.

## Action!

While the stage is still being set on future projects, the curtain has already risen on





the Township's most recent parks upgrade.

A newly renovated Rotary Amphitheater in Community Park was unveiled in May, the result of the Cranberry Township Community Chest's Project of the Year initiative.

The project featured upgrades to the stage and electrical capacity, improved light and sound, an extended roof, improved ADA accessibility, and new restrooms. It aims to create a better experience for both spectators and performers.

Sponsored by Armstrong, the project shows not only community support and desire for excellent parks, but the commitment of the community to partner to make it happen.

"Time and time again, we've seen these projects come along and make our already amazing parks even better," he said. "The Board of Supervisors and Township staff recognize how important the parks are to what makes Cranberry great, and we'll continue working hard to keeping them at the highest level." 🏡





# CRANBERRY'S PARKS AND FACILITIES AT A GLANCE



## 1. MUNICIPAL CENTER

2525 Rochester Road  
Established 1991

- Township Administration
- Parks & Recreation
- Cranberry Police
- Cranberry Library & Makerspace
- Cranberry Early Learning Center
- Cranberry Area Diversity Network
- Property Tax Collector
- Council Chambers
- Grange Hall (Senior/Teen Center)
- Class/Meeting Rooms
- Gazebo/Garden/Schoolhouse
- Gymnasium
- Indoor Walking
- AE Skate Park
- Free WiFi by Armstrong
- AED
- District 12 State Representative
- Chamber of Commerce Offices
- ATM



## 2. COMMUNITY PARK

111 Ernie Mashuda Drive  
Established: 1963; Acreage: 95 acres

- Rotary Amphitheater
- Rotary Shelter
- Lions Shelter
- Jaycees Shelter
- Raider Pride Shelter
- 2 Sand Volleyball Courts
- 5 Baseball/Softball Fields
- Football/Multi-purpose Field
- Basketball Court
- Tennis Courts
- Rotary Dog Park
- Kids Castle Playground
- Nature Trail
- Little Free Library
- Restrooms
- Free WiFi by Armstrong



## 3. GRAHAM PARK

260 Graham Park Drive  
Established: 2009; Acreage: 116 acres

- Baseball/Softball Campus
- Miracle League Field
- Pirates Charities Playground
- Little Free Library
- Heritage Village Display
- Soccer Campus
- Football/ Lacrosse Campus
- CTCC SportCourts (Pickleball/Tennis/Horseshoes/Bocce)
- Centennial Scouting Plaza
- Fishing Pond
- Brush Creek Trail
- Community Garden
- Bike Repair Station
- Dek Hockey Rink
- 2 Fitness Stations,
- WiFi by Armstrong
- Free Parking
- Concessions
- Restrooms
- Outdoor AED
- ATM



*Interested in renting a meeting room, multipurpose room, gymnasium, or park shelter? Visit [Cranberry4FUN/FacilityRental](http://Cranberry4FUN/FacilityRental) for more information, or call Parks and Recreation at 724-779-4FUN (4386).*



## 4. CRANBERRY HIGHLANDS

5601 Freshcorn Road  
Established: 2002

- 18 hole, Par 70 Course
- Clubhouse
- Pro Shop
- Food and Beverage Services
- Banquet & Meeting Rooms
- Grill Room & Patio
- Men's & Women's Locker Areas
- Audubon Pavilion
- USGA Handicapping
- Rental Clubs
- Club Fitting & Repair
- Driving Range
- Golf Carts with GPS Navigation
- Golf Instruction
- Audubon Nature Trail
- Free WiFi by Armstrong



## 5. NORTH BOUNDARY PARK

1171 North Boundary Road  
Established: 1997; Acreage: 133 acres

- Community Waterpark
- Crocodile Cove Playground
- Nextier Walking Trail
- Disc Golf Course
- Nature Trail
- Veterans Memorial
- Dan Baker Shelter
- Penn Power Shelter
- Reynolds Shelter
- Veterans Baseball Field
- Giant Eagle Soccer Field
- Rodgers Soccer Field
- James Wolfe Soccer Field
- Skip Gross Wetlands
- Concession Building & ATM
- Playground
- Restrooms
- Bike Repair Station
- Fitness Station
- Free WiFi by Armstrong





# Return to Play

## IS A REAL MIRACLE

For many, the social restrictions caused by the COVID-19 pandemic haven't been a day at the ballpark.

The isolation and separation were tough to navigate, and perhaps no group was impacted more than the Miracle League of Southwestern PA.

"The special needs community was hit harder than most people realize," said Mike Sherry, President of the League. "Isolation and being alone is the norm for a lot of these kids, and the pandemic amplified that."

The gates at the Miracle League field in Graham Park remained shut in 2020, but with restrictions eased and safety in mind, players returned to the field with dreams of hitting a grand slam and smiles on their faces.

Miracle League enables children and adults with special needs to learn the fundamentals of baseball on specially designed turf field that accommodates wheelchairs. The facility and program, introduced in Cranberry in 2009, helps participants make friends, enjoy physical activity, and accomplish goals.

Sherry said the June 5 Opening Day and subsequent 2021 season – the 11th in League history – promised to be one of the biggest yet. With more than 20 teams in several divisions, both the number of players and volunteers had increased.

"We couldn't be happier on our return," Sherry said. "We want to get those smiles and feelings of joy back on that beautiful field."

Sherry said the community has played a big part in the League's success, and there is no such thing as too many volunteers. That includes buddies for the players, as well as announcers for games – the "most valued position," Sherry said.

"Every player wants to hear their name over the speaker," he said, adding volunteers don't need experience. "We can teach you."

To get involved, visit [mlswpa.org](http://mlswpa.org). It's a home run of an opportunity to engage in community spirit while bringing hope and inspiration for some of the most special individuals this world has to offer. 🏠



Photos Courtesy of Jessie Hoffman





# A Cut Above

## GROUNDS CREWS KEEP CRANBERRY BEAUTIFUL

Despite what's been said, it's nearly impossible for the grass to be greener on the other side of Cranberry Township.

That's because the Township's Grounds Maintenance crews work almost year-round to maintain parks and facilities.

And while large riding mowers are often visible in places like Graham, Community and North Boundary parks, that's just the tip of the iceberg.

In addition to those parks, which consist of 40 acres of sports fields, crews are also responsible for the grounds at the Municipal Center and the Route 19 and Haine fire station. They also frequently head off the beaten path to maintain eight satellite properties owned by the Township.

They're also responsible for the challenging, wooded terrain at the Disc Golf Course in North Boundary Park, as well as the pristine pool lawn at the Waterpark.

It adds up to 80 acres, 40 of which are

sports fields that get plenty of use by youth sports organizations no matter the season. The goal is to not only keep the grass maintained, but also healthy to ensure a perfect playing experience for everyone, according to Drew Fredericks, Manager of Grounds Maintenance.

The grounds crew, which consists of five full-time employees, quadruples in size each summer with an influx of seasonal employees who keep grass cut and weeds at bay.

And, when they're not tending to the green spaces, crews can be found assisting with special projects and events around the Township. Fredericks noted they play a vital role in making sure the annual Community Days festival is successful, from prepping the grounds to helping set up booths and other infrastructure.

It's all in a day's work for members of the Township team who are often heard but perhaps not seen. 🏡

Speaking of  
GREEN SPACE

*Did you know the Township has permanently preserved over 500 acres of green space through its planning process? That's equal to 3.5 square miles of protected land.*





# CRANBERRY HAS THE **CURE FOR** *Boredom*

By Bruce Mazzone  
*Cranberry Township Board of Supervisors*



**The phrase “I’m bored” should never be uttered in Cranberry Township.**

No matter your interests or abilities, the Township offers a myriad of activities and opportunities in our three parks. It stems from a commitment to providing our residents and visitors world-class recreational opportunities.

I’ve been fortunate enough to see that commitment firsthand on three different levels.

As a member of the Board of Supervisors, I’ve seen the importance our Township leaders have placed on continually finding new ways to better our parks system. That began with the leadership of former Manager Jerry Andree and continues under new Manager Dan Santoro.

Staff works hard to find grant and sponsorship opportunities to fund new projects and other upgrades. The Board has adopted this passion for parks, and we’re always thrilled to approve such projects.

That community spirit and engagement trickles down to the Cranberry Township Community Chest. As President of the organization, I’ve repeatedly seen that the parks are not just important to us as a Township, but to our business community as well.

No matter the request, residents and businesses step up to the plate to fund our CTCC Projects of the Year, many of which focus on park improvements. In the past decade, projects include the creation of the North Boundary Disc Golf Course and Nature Trail, SportsCourts and the Miracle League Field Playground in Graham Park, fitness stations in Graham and North Boundary, the construction of Kids Castle in Community Park, and the Centennial Scouting Plaza and fishing lake in Graham.

The most recent endeavor, a renovation of the Rotary Amphitheater in Community Park, not only improves the community experience while enjoying live music or theater presentations, but also makes a more enjoyable atmosphere for the performers. It will help bring even more people together in a beautiful space.

Another recent example is the \$100K Jerry Andree Legacy Endowment. Established by friends and family upon Jerry’s retirement, the endowment will benefit the parks for generations to come. And its only one of more than 20 endowments, totaling nearly \$2 million, established by fellow residents to make our parks better.

As a community, together, we raised over \$7 million for these projects because of supporters like you.

Togetherness and community are at the heart of our commitment to parks, and that is nowhere more evident than on the aforementioned SportsCourts. A personal passion of mine, pickleball has become the most popular sport in the Township in recent years. The Cranberry Township Pickleball Association has helped foster that growth, and the continued commitment of all involved has paid off.

In June, Cranberry was host of the Mid-Atlantic Pickleball Tournament. Hundreds of players from the five-state region played for a chance to earn an automatic bid to the National Tournament in California later this year.

Not only was it a chance to show off our fantastic program, but it also brought many new people to Cranberry to see the amazing community we have. They left that weekend with an experience they will tell their friends and families about – letting them know that Cranberry is the place to be.

There are many reasons why that’s true, and our parks system exemplifies them all. With your support, we will work hard in keeping that system running at the highest possible level.

**Now, get outside!** 🏡







## Making an Impact

*Fee plan keeps traffic fee moving*

Cranberry was the first municipality in Pennsylvania to have developers pay for their impact on traffic and roads.

That Transportation Impact Fee Program and corresponding Transportation Capital Improvements Plan will get a slight refresh in the coming months.

Supervisors voted to re-establish the Impact Fee Advisory Committee. They will develop an updated Transportation Capital Improvements program to later be considered by the Board.

The update is necessary due to the completion of many of the projects in the existing plan, as well as updates to the project cost estimates that were prepared in 2014. The Committee last met in 2015.



## Tax Deadlines Outlined

The 2021 Butler County / Cranberry Township real estate taxes were due at face value on June 30. The penalty amount for these taxes began July 1 and goes until December 31. The 2021/2022 Seneca Valley School District real estate taxes will be mailed August 1 and are payable at a 2 percent discount until September 30. They can be paid at face value from October 1 until November 30. The last day to pay all current year taxes is December 31, 2021. Please stop in or mail payments to P.J. Lynd T/C, 2525 Rochester Road, Suite 205, Cranberry Township, PA 16066.

For more tax information and hours of operation, call the tax collector's office at 724-776-1103 or email [pj.lynd@cranberrytownship.org](mailto:pj.lynd@cranberrytownship.org).



## Almost Free

*Freedom Road completion eyed*

The first major project to improve Freedom Road is on the verge of wrapping up.

PennDOT's Freedom Road Turnpike Bridge expansion project is anticipated to be completed in late summer/early fall. The project widens the span and adds pedestrian access and safety measures.

Work has also begun on the first phase of Freedom Road expansion work funded by Better Utilizing Investments to Leverage Developments (BUILD) grants.

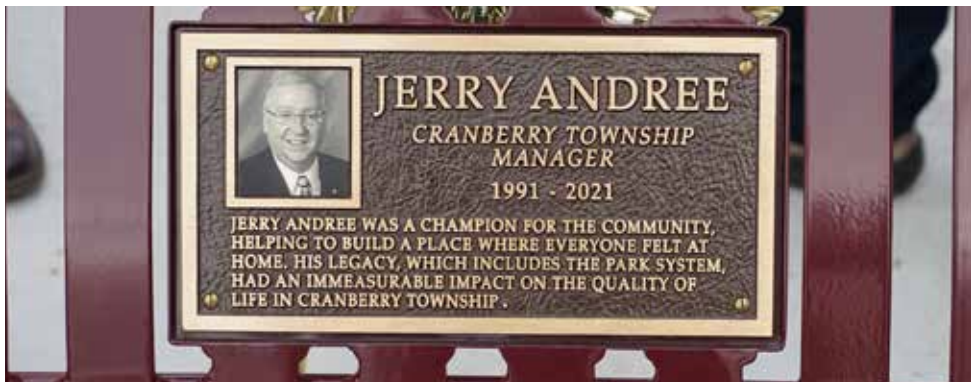
That phase will expand Freedom Road from Commonwealth to Haine School Road. Construction will begin later this year.



## Making Progress

*Traffic signal to improve safety*

A \$250,000 Multimodal Transportation Fund Grant signals progress toward making an area of Route 19 safer. The funds will be used to install a traffic light at the intersection of Route 19 and Progress Avenue. Because the grant is for more than one form of transportation the signal will have pedestrian-friendly features, including a signal for pedestrians and a crosswalk.



## The Jerry Andree Way

*Sign, Bench Dedicated*

For more than 30 years, Cranberry has benefitted from "the Jerry Andree way" - the 'bench' mark of success.

Andree's commitment to bettering the Township and years of service are now memorialized via Jerry Andree Way at the entrance of the Municipal Center, as well as a bench dedicated in Graham Park.

Dozens of employees, as well as Andree's family, gathered for the unveiling of the street sign and bench. They assure Andree's legacy and mission are not soon forgotten.



# Crossing the 'I's'

## TOWNSHIP ADDRESSING INFILTRATION AND INFLOW ISSUES

There's no 'I' in team, and Cranberry's Utility Department hope there's no 'I's' in the sanitary sewer system.

Infiltration and inflow, that is.

A flow monitoring study being conducted this summer aims to cut down on the amount of unwanted water being treated at the Brush Creek Water Pollution Control Facility. That unwanted water, called infiltration and inflow, puts unnecessary strain on the system and over time could shorten the life cycle of the recently renovated facility.

The flow monitoring study began with the identification and assessment of the Township's 757 manholes. Each spot was rated on a scale using a GIS mapping system, allowing officials a chance to see potential problem areas.

Additionally, flow monitors were placed at 16 interceptors to monitor intake.

According to Greg Hoover, Program Manager for Public Works/Utility Operation, problem areas are identified as those that allow rain and storm inflow into the collection system. He said while the Brush Creek facility was designed with future development in mind, overwhelming it with infiltration and inflow will erode that capacity.

"We need to protect the capital investment," he said. "We also need to ensure customer satisfaction and provide the highest-level service at the lowest cost."

The study will allow the entire system to be monitored at once as opposed to on a



one-by-one basis. After the six-month study period ends, officials will analyze the data and make a recommendation to the Board of Supervisors this fall.

According to Dick Hadley, Board of Supervisor Chairman, there is a high cost associated with treating stormwater, and any investment to improving the system comes back to consumers.

"For every dollar we invest in reducing infiltration and inflow, we get back two-fold," he said. 🏠

## CRANBERRY TOWNSHIP RECYCLING 101



sewer · water · trash  
collection connection

MATERIAL	ACCEPTED	NOT ACCEPTED	PREPARATION
<b>Glass</b>	Clear, brown, amber and green glass bottles and food jars	Broken glass, light bulbs, dishes, drinking glasses, ceramics, mirrors, Pyrex or tempered glass	Rinse, remove and discard lids, and do not break glass. (Labels may be left on.)
<b>Aluminum, Steel and Bi-Metal Cans</b>	Food and beverage cans	Aluminum foil, cans containing food, clothes hangers, scrap metal, screws, nails, toys, lawn furniture, paint cans, and siding	Rinse cans (crush if space is needed). Please push lid down inside of can.
<b>Plastics (PET, HDPE) Stamped #1 thru #6</b>	Clear and green plastic soda bottles, milk and water jugs, liquid detergent, bleach and softener bottles, hair care bottles	Styrofoam peanuts and blocks, plastic plant pots, #7 plastic, foam plastic egg cartons, plastic wrap, bubble wrap, plastic bags (loose nor bundled), CD/DVD's, toys, lawn furniture, motor oil, cooking oil	Discard lids and rinse container (Crush if space is needed.) Lids are not recyclable, be sure to remove & discard in trash.
<b>Newsprint/ Magazines</b>	Newspapers, magazines, catalogs, office and computer paper, phone books, wrapping paper, junk mail	Foil wrapping paper	Place loose in cart
<b>Cardboard</b>	Clean, corrugated, pressed cardboard cartons, boxes including, moving and shipping, paperboard boxes, tissue boxes	Pizza boxes, milk cartons, juice boxes, take-out food containers, oily, soiled, or contaminated cardboard	Flatten or break down into pieces no larger 4 feet. Remove all packing material including styrofoam blocks, peanuts, bubble wrap, etc.



# *Coming Around Again*





## CIRCLING BACK TO SAFETY

*When comparing a roundabout to a signal, studies show that roundabouts provide:*

- **90 percent reduction in fatal crashes**
- **75 percent reduction in injury crashes**
- **30-40 percent reduction in pedestrian crashes**
- **10 percent reduction in bicycle crashes**

*~ Pennsylvania Department of Transportation*

## MORE TRAFFIC CIRCLES COMING

**W**hat goes around, comes back around.

It's been a few years since a new roundabout has been installed in the Township, but 2021 promises to circle back on the traffic control measure.

The concept was first introduced on Long Branch Road in 2009 as part of the expansion in Cranberry Woods. More followed on Glen Eden Road, Cranberry Springs Drive and North Boundary Road.

According to Ron Henshaw, Director of Planning & Development Services, roundabouts are an attractive traffic-control device for several reasons. For starters, they come with lower maintenance costs and are visually appealing. They also keep traffic constantly flowing, improving the motorist experience.

But ultimately, it comes down to safety. Drivers must slow down to navigate the turns, which helps reduce the type and severity of accidents. Accidents are overwhelmingly less serious, and pedestrian-involved incidents are also significantly reduced.

That's why the four planned roundabouts are being implemented in areas where pedestrian traffic is anticipated to be heavy.

The first will be part of the MSA Thruway project, which aims to make pedestrian travel between Cranberry Springs and Cranberry Woods easier. Motorists exiting Interstate 79 to travel through the tunnel will navigate the traffic circle. It is expected to be installed later this summer.

Elsewhere, the Meeder development will see a roundabout installed at the back entrance on Ogle View Road. As Meeder is designed to be pedestrian-friendly, the roundabout will allow connectivity to points north for walkers, runners and cyclists via sidewalks and bike lanes.

On Ehrman Road, a roundabout will help keep traffic calm and flowing at the entrance to Seneca Valley's new Ehrman Crest Elementary School.

The fourth planned roundabout is one that has been under consideration for many years at Executive and Brandt drives. With potential for new developments on Brandt Drive, an extension will likely be built to connect it to Executive Drive. The "mini" roundabout will connect to that extension and improve access to businesses along Executive Drive.

It is expected to be bid for construction in 2022, bringing that project – and the Township's love affair with roundabouts – full circle. 🏠





# Can You Dig It?

## MSA THRUWAY READY TO WELCOME TRAFFIC

**I**t's the age-old childhood question: How long would it take to dig a hole to China?

Crews digging beneath Route 228 might be able to make an educated guess, as they've spent the last 18 months tunneling 20 feet into the earth to create the MSA Thruway.

The COVID-19 pandemic and a harsh winter slightly delayed the project, as crews needed consecutive warm, dry days to seal and waterproof the tunnel span. While that work could have been

completed without such desirable conditions, it was an easy decision to wait.

"We wanted to make sure we were getting it done the right way," said Michael Malak, the Township's Director of Engineering.

Now, there is light at the end of the tunnel, with a mid-to-late summer ribbon cutting anticipated.

Once completed, the project will connect Interstate 79 to destinations in Cranberry Springs and Cranberry Woods beneath Route 228.

A roundabout at the approach to the tunnel from I-79 will direct traffic flow and moderate speeds for the pedestrian-friendly passageway. The project includes sidewalks and bike lanes.

Completion will not only bring reduced traffic volumes on Route 228 and easier access to many homes and businesses, it also brings to close a project that has been more than 20 years in the making.

Now, can you dig that? 🏗️



# EMS AND CHILL?



## Subscription Plan is a Cool Way TO KEEP SERVICE RUNNING

There's a subscription service for everything from streaming music and movies to monthly food and outfit clubs.

But unlike Netflix, most people don't think of adding something to ensure their safety to their monthly list of bills.

Cranberry EMS' subscription plan not only eases the burden on members during stressful emergencies, but also helps ease the financial burdens faced by the organization.

Funding challenges abound for EMS organizations nationwide, as funding continue to decrease, and obtaining payment from healthcare providers and

patients becomes more challenging.

Despite those challenges, Cranberry EMS has consistently provided award-winning service to the Township and surrounding areas, making sure no call goes unanswered.

Through the Cranberry Township EMS Ambulance Service Subscription Program, hundreds of dollars in medical bills can be saved. The subscription offsets the costs of co-payments and deductibles an insurance company may require a person to pay for an ambulance transport.

The subscription not only provides peace of mind but goes a long way in ensuring

Cranberry Township EMS can continue serving the community, ensuring staffing levels remain at full capacity and vehicles and equipment are well-maintained to provide the community with around-the-clock care, 365 days a year.

Additionally, Cranberry Township EMS has reciprocal agreements with all immediate surrounding EMS services and 17 other organizations who are members of the Northeast Ambulance Alliance, meaning the subscription will be honored.

Visit [CranberryTownshipEMS.org](https://CranberryTownshipEMS.org) or call 724-776-4480 to help save a life. 🏠

### CRANBERRY TOWNSHIP EMS SUBSCRIPTION PROGRAM

An annual membership program that reduces out-of-pocket costs in the event of a medical emergency.

With your paid subscription, CTEMS will also be able to continue to protect and serve our community.

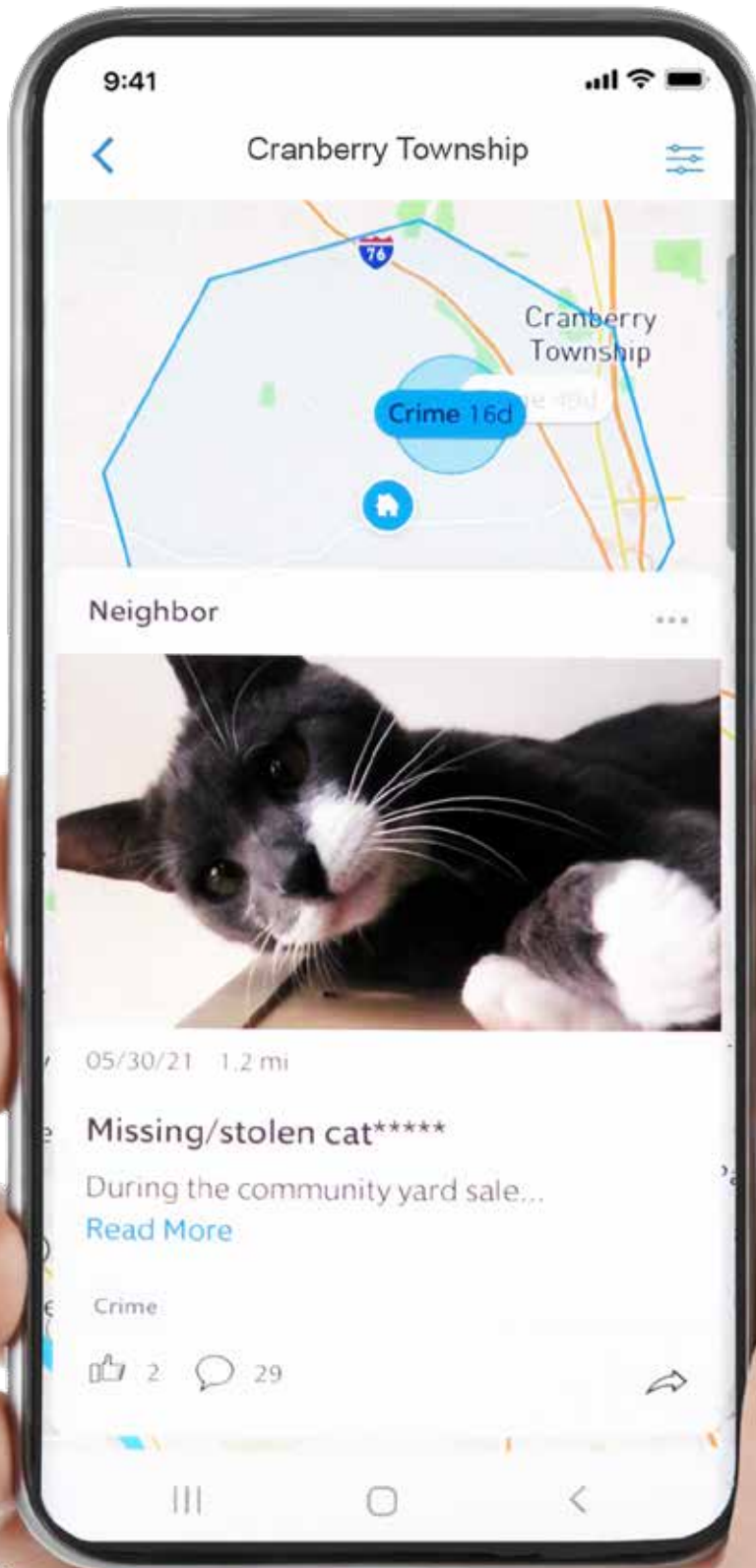
**SIGN UP: 724-776-4480 OR  
CRANBERRYTOWNSHIPEMS.ORG**





# Put a RING on It

## PARTNERSHIP LETS COMMUNITY HELP POLICE



The community, along with new technology, are helping Cranberry's police run rings around potential criminals.

A partnership between the Township Police Department and the makers of Ring doorbell helps the community stay informed about safety incidents and share information with the department. Neighbors Public Safety Service allows local public safety agencies to join and use Neighbors, a free app by Ring designed to engage the community whether they own a Ring device or not.

Agencies across the country use Neighbors to share important, hyper-local crime and safety information with their residents, view and respond to publicly posted content on the app, and request assistance from residents to help make their neighborhoods safer.

Residents can also share information with the Department if they so choose. Neighbors was designed so that residents decide what information is shared to the app and whether they wish to respond to a public agency's request for information.

"We're able to ask our community for tips and information, and receive pertinent information in real time," said Lt. William Ahlgren, the Department's Community Relations officer.

Public safety agencies do not have access to user cameras, live streams or personal information when using the app. Through Neighbors, public safety users can only view videos and other information if it has been publicly posted on the app or explicitly shared with the agency in response to a request. Additionally, addresses and identities are not shared, making for a secure exchange of information.

A Ring device is not needed to participate. Download the Neighbors App for free on iOS, Android and FireOS devices and help keep Cranberry safe. 🏠



# FIRE COMPANY DOESN'T GET READY *THEY STAY READY*



Within minutes of arriving to a working car fire, members of the Cranberry Volunteer Fire Company had the situation under control.

The prior evening, dozens of members stormed into the Public Safety Training Center for full practice sessions fighting a working car fire.

Don't call it a coincidence - members of the organization don't rely on coincidences.

Instead, they're in constant preparation to handle whatever call may come.

Those efforts greatly increased in 2020 when, despite the COVID-19 pandemic, members set a record for hours trained.

That trend continued into 2021 and is now aided by a new three-story burn facility

at the Public Safety Training Center. The custom-designed facility, funded by the CTVFC Relief Association, allows members to train and hone fire-fighting skills in a realistic setting just up the hill from the Park station.

The impressive structure comes in addition to the training trailer that contains a three-story maze that simulates confined spaces that can be found within a home or business. While inside, students are faced with smoke, black-out conditions, loud noise, and strobe light effects. The refurbished trailer was donated by the Big Knob Fire Department and, like the burn building, will pay immediate dividends.

"While there's nothing like the experience of fighting actual fires, these training facilities are the next best thing," said Scott Garing,

Chief of Fire and Emergency Services. "They help increase knowledge and, perhaps more importantly, confidence for our men and women when they arrive on a scene."

Cranberry's training efforts haven't gone unnoticed and are drawing interest from outside the Township.

This fall, the entire Butler County Community College entry level firefighting program will be offered at the Public Safety Training Facility. It not only will help train a new generation of first responders but will also expose them to the many opportunities in Cranberry Township.

"It's a win-win for us," Garing said.

Interested in joining and training in your own backyard? Email [contact@ctvfc21.org](mailto:contact@ctvfc21.org), or visit [CTVFC21.org!](https://www.ctvfc21.org) 🏠





# LIKE A ROLLING STONE



## ARMINA STONE BRINGS ROCK-SOLID QUALITY

*“We are thrilled to be part of the Cranberry community.”*

From the largest quarries in places like Brazil and Spain to kitchens and bathrooms in Cranberry Township.

It's quite the journey for the extravagant marble, quartz and other stones peppering Armina Stone's newest showroom and warehouse on Route 19.

It's the third location for the company, which makes it the largest countertop retailer and fabricator in the Pittsburgh region.

Owned and operated by Emre Basman, the Cranberry location is a 25,000-square-foot luxury showroom and slab warehouse housing over 400 styles and colors of natural stone and quartz from around the world. It joins the original location in Cheswick and The Plaza at The Point in Robinson.

“We felt it was the right time to open a third location to serve a large portion of Pittsburgh North,” says Basman. “With home construction still growing strong in the area, we recognized the demand for our products and services.”

Indeed, providing access to new homebuilders in Cranberry proved attractive for Basman, who hand-selects the stones from quarries around the world. Stepping into the Cranberry warehouse, customers are greeted by hundreds of options at a variety of price points.

After selecting the perfect stone, Armina Stone's experts use the latest cutting-edge technology to cut and fit the piece to any area. The entire process from selection to installation is handled in-house.

In addition to the warehouse and showroom, the Cranberry facility also features a 1200 square foot classroom-style learning center for industry leaders to meet and learn. It also offers a state-of-the-art media room for production of Armina Stone's “From the Top with Celina Pompeani” video podcast show in which she interviews local experts

and stakeholders.

It's all about making a community connect.

“We are thrilled to be part of the Cranberry community,” Basman said.

Armina Stone's showroom is located at 20701 Route 19, Cranberry Township. To learn more about the showrooms, stone inventory, view remnants and receive a free estimate visit [arminastone.com](http://arminastone.com) or call 412-406-8442. 🏠







## A Collector's Best Friend

# COMMUNITY PARK STORAGE IS OPEN *FOR STUFF*

**G**ot stuff? Americans have a ton of stuff and like to keep it.

So it comes as no surprise this urge to cherish “treasures” creates a surge in business for self-storage units across the country. The self-storage industry has become one of the hottest growing industries in commerce for almost four

over half the storage units in the country are in suburban areas. Butler County residents add to the mix with almost 10 percent renting storage units.

Community Park Storage opened their doors last year and have seen renters who are moving, buying, or selling their homes, those looking for extra space in their current homes, those who want to protect an investment like an antique car, or those who rent to store business equipment.

Whatever the reason, space is wanted, and in demand with units running from approximately \$29.50 to \$319 a month.

This high-quality space is open for rent and offers superb indoor temperature-controlled storage units. Renters even have the option to drive right up to the units and unload undercover. The convenient all-weather access can be booked conveniently on-line or in-person at the facility on Route 19. Their website is set to immediately rent units or pay the monthly rental fee with ease.

Pack up and visit Community Park Storage where storage becomes a collector's best friend. 🏠



decades. The same is true in the region, as Community Park Storage becomes the third storage facility in Cranberry Township.

Community Park Storage had the right idea to locate in Butler County, however, as



STORAGE TIPS

- Use bubble wrap when storing dishes or glassware.
- Stack lightweight chairs “seat to seat” to save space.
- Holiday decorations can be stored in their original cartons.
- CDs, tapes, or records should be stored in airtight containers to prevent damage.
- Pack books, files, or documents flat and use newspaper to fill empty spaces.
- Wrap lamp bases in padding & store lamp shade separately.
- Store clothing on hangers before folding into cartons.
- Clean and disinfect refrigerators, stoves, or other appliances.



# Recon Brewing

Cheers!



## RECON FINDS A HOME IN MEEDER

There's a lot to toast to in the Meeder development.

And, as the community's first business, Recon Brewing offers the perfect way to salute the success.

Recon Brewing was established in 2016 by Toby Wehr, Dave Bestwick, and Nate Bacher, who met through the fire service in Butler Township. Their friendship was forged in fire – and a love for drinkable yet high-quality beers.

The original Recon location opened in Butler soon after, the name paying homage to Butler's place in history as the birthplace of the jeep vehicle. The jeep prototype, dubbed the Bantam Reconnaissance Car, serves as the namesake.

While the brewery's history and other elements are deeply tied to Butler, Bestwick hopes Recon can become ingrained in the Cranberry community in the same way.

"It's amazing that Cranberry has this massive growth but is still able to keep that small town community feel, and that's important to us," Bestwick said.

They've already become involved with the Cranberry Township Community Chest and are eyeing other ways to get involved.

Still, at the heart of Recon is the beer.

The brewpub offers the full array of Recon's tasty brews, which range in variety and style. The ever-changing tap list features the Trail Rated Sour Series and a mix of IPAs, ales, and stouts. One of the constants, however, is the Meeder Irish Red Ale. It pays homage to the Meeder farm, its logo emblazoned with the bright red barn.

Recon offers a full food menu most days and brings in food trucks to change it up from time to time.

Live entertainment is also a cornerstone of the brewery, with performers taking the stage several nights a week. It's all about creating an atmosphere of fun, fellowship and, of course, great beer.

"People don't just come to have a beer," Bestwick said. "They come to see their neighbor, make a friend, meet a friend, sit around the fire pits, catch up and unwind from a long week."

Tap in and visit their website for their full beer and delicious food menu at [reconbrewing.com](https://reconbrewing.com). 🏠







## Pampered Pups!

# CAMP BOW WOW PLEDGES TO PLEASE PUPPIES

Suits or resumes aren't required for interviews at Camp Bow Wow.

Really, the only thing a potential canine visitor needs to display during their introductory interview is a willingness to play well with others – and maybe a wagging tail.

The doggy day care and boarding facility staff at 41 Progress Avenue take their pooch happy jobs seriously as owners are assured of quality care.

That's evident by the colorful enrichment areas where pooches play in ball pits, or in

the luxury suites that are equipped with televisions – often tuned to "Scooby Doo" – and a webcam feed allowing owners to watch their dog from anywhere.

That constant contact was what drew owners Del and Hydrie Fike to want to open a Camp Bow Wow location. They were frequent customers at the Green Tree location, relying on the streaming camera for check-ins with their pups. They know perhaps more than anyone the nervousness that can exist when leaving pets for a long period.

feeding, and access to the large, indoor and outdoor play yards, and enrichment rooms during their stay. Staff follows any special requests and perform frequent health checks to make sure dogs are happy and comfortable.

They also receive plenty of TLC from the highly trained staff, as well as lots of social interaction with other dogs. Playtime is monitored to further ensure safety.

In addition to daycare and boarding, Camp Bow Wow also offers dog grooming services, and can accommodate special events like dog birthday parties. Pricing plans are all-inclusive.

The Cranberry location also will play host to community parties and adoption events in the future.

Visit [campbowwow.com/cranberry](http://campbowwow.com/cranberry) or call 724-776-7297 for more information. 🏠



"Sometimes the parents are a little more nervous than the puppy, but the cameras give them reassurance," Del Fike said.

Each dog has its own cabin for sleep and



# PAAS IS TECH-DRIVEN



## *from Cranberry Township*

**P**AAS, the global leader in technology spend analytics, has clients across the globe who are served from their headquarters on Emeryville Drive in Cranberry Township.

The company is not only an outstanding company in Western Pennsylvania but has been recently recognized as a model across the country. According to Startup Pill, PAAS was named one of the best procurement startups because of their innovative approach and exceptional performance.

Among their dynamic programming is their flagship SaaS platform PAAS360 that involves an Artificial Intelligence platform and Human-Based Computation (HBC) to accelerate the prediction of the best optimal price for technology services and products.

The company is also well-known for the prediction of savings, as their PAAS360 offers a module for contract

management, spend analysis, savings forecast, benchmark analysis and a project alignment module. Clients like Zimmer Biomet, Principal Financial, Driven Brands, Pet Retail, ServiceMaster, Origina and hundreds more across the globe utilize PAAS360 to create positive savings outcomes.

To keep the company progressive with technology, PAAS' affiliate company Invari recently launched a new platform in which clients receive real time insights to telco/mobility invoices.

Invari is a telecom invoice management platform that breaks down a traditionally difficult process into a simplified overview of an organization's telecom invoices, with the goal to identify savings opportunities. Clients benefit from multiple functions, including specialized invoice workflows, cognitive capture, entity resolution, data categorization, and variance reporting.

"Our goal was to create a platform for

organizations who can benefit from an extension of their AP department," said Bennett Falck, Director of Spend Analytics at PAAS. "The coordination and constant monitoring of telecom invoices can exhaust already limited resources. We saw an opportunity to modernize a problem many organizations face with an automated solution that seamlessly identifies significant variances so you can proactively solve billing issues."

This business-to-business offers differentiated data-driven insights generated by PAAS360 to help organizations of all sizes reduce their technology costs. PAAS has negotiated more than \$25 billion in technology agreements, accelerating companies' digital transformation with PAAS while benefiting from a guaranteed savings. For every dollar you spend with PAAS, they guarantee a minimum of \$5 in savings.

To find your companies' savings, visit [www.paasadvisors.com](http://www.paasadvisors.com). 🏠



## BUSINESS BRIEFS



### Guiding Light

*Facility will be regional religious destination*

It's been said that you are never lost when you can see the temple. A new Church of Jesus Christ Latter-Day Saints temple along Powell Road will be a special place for those who are members of the denomination in the region. The Board of Supervisors gave Land Development and Conditional Use approval for the Temple, to be located on 5.8 acres at 2093 Powell Road. The 29,785 square foot building will host special events and ceremonies for members of the church and will be a destination for parishioners throughout the region. The site will feature intricate greenspace and gardening work, as well as pedestrian paths. Officials said because the facility is only used for special occasions, the day-to-day traffic impact will be minimal.



### No Thorn in Their Side

*Industrial Park fully developed after approval*

The last piece is falling into place in the Thorn Hill Industrial Park. Thorn Hill Sunbelt Rentals will develop a site at 215 Thorn Hill Road, which is the last undeveloped parcel in the park. The 8,847 square foot building will house a heavy equipment sales, rental, and service establishment on approximately 4.7 acres. Of that, 3.97 acres will be developed. With the site development comes increased pedestrian connectivity along Thorn Hill Road.



### Laying New Ground

*Frito Lay Seeks Expansion of Warehouse*

Betcha' can't build just one. That's true for Frito Lay as officials at the company's warehouse in the Thomson Business Park seek to expand the building. The two-phase expansion consists of a 2,634 square foot dock addition in the first phase, and a 32,490 square foot expansion to the existing distribution warehouse on the 10-acre property at 1100 Thomson Park Drive. With the expansion comes streetscape enhancements in the area as required by Township ordinance.



### Dog Days Ahead

*Board approves doggie daycare*

From humans to their four-legged friends, a Township property that formerly served as a gym will now provide exercise – and boarding – opportunities for pooches. Dogtopia, a doggie daycare facility, will take over 802 Thomson Park Drive, a 5,300 square foot building that was previously a fitness center. It will house two outdoor activity areas for large and small dogs specifically, surrounded by an 8-foot fence. As part of the conditional use approval, the developers will use sound-reducing material to minimize noise.



IN CRANBERRY!

#### Armina Stone

20701 Route 19

#### Atria Continuing Care/Personal Care

3020 Fairpoint Lane

#### Pizza Palermo

1656 Route 228, Suite 103

#### Recon Brewery

301 Tillary Lane, Suite A (Meeder)

#### SF Sales LLC

502 Thomson Park Drive

#### SRI DESI House

8001 Rowan Road

#### The Smiling Moose

8032 Rowan Road



### WHAT ARE THEY BUILDING?

Find out more: [CranberryTownship.org/Biz411](http://CranberryTownship.org/Biz411)





## At Home with **Bill Billeter**

Noise ordinances in Bill Billeter's neighborhood are safe, as he's more than happy to go outside when making – or, rather, swinging – a racket.

In fact, he's most likely to be found at the SportsCourts complex in Graham Park, where he's helped grow the Cranberry Township Pickleball Association from a niche group to a nationally recognized force in the sport.

Not bad for someone who hadn't heard of pickleball before moving to Cranberry Township 12 years ago.

A native of Pittsburgh's north side, he moved to Cranberry in 2009 and became fascinated by the sport at the Rose E. Schneider YMCA. What was then a half-year program began drawing players from across the region.

When Cranberry Township committed to building a world-class pickleball facility, Billeter was one of the first to jump on

board.

As part of the Cranberry Township Pickleball Association, he started the Early Learner program to help new players build confidence. That not only helped retention rates, but continues bringing new people in.

He also creates "ladder" tournaments that are based on skill level of hundreds of players. That attention to detail comes thanks to a career auditing the National School Lunch Program and Child and Adult Care Food Program for the Department of Education, which Billeter said strengthened his planning skills.

Now retired, he spends more than 1,000 hours each year volunteering to keep pickleball growing in Cranberry and beyond. As the USA Pickleball Ambassador for Cranberry, his goal is to make the Township known for its pickleball offerings.

It's all about making Cranberry a place that continues to grow and doesn't remain stagnant – the reason he and his wife, Debbie, and their three children decided to call it home in the first place.

When he isn't on the court, Bill can perhaps be found researching history with Debbie, who is an active member of the Cranberry Genealogy Club. It won't take much research to figure out that CTPA's history wouldn't be what it is without Bill's guidance and passion. 🏠







# BREAKFAST FUNDRAISER A COMMUNITY FAVORITE



## LIONS PANCAKE BREAKFAST

July 10: 8AM-11AM  
Community Park

Of all the ways to start the day, the Cranberry Lions Club has a breakfast worth flipping for.

The club's annual pancake breakfast on the Saturday of Community Days has been a staple of the event, and organizers have routinely heard the doughy offerings are of the highest quality.

"People say we have the best pancakes," said Club Secretary Tim Roscoe. "It's not a secret recipe or anything, but people seem to really like them."

Perhaps its more about the cause than what's on the plate. The breakfast serves as one of the club's major fundraisers each year, with the more than 300 hungry participants accounting for over \$2,000 in donations. That includes runners in the annual 5K race who work up a hunger along with a sweat.

As the club's financial year begins in July, it also helps replenish coffers for the upcoming year.

Every dollar raised stays in the community, with a majority going to help with vision related needs in the community. That could be purchasing glasses or eye exams for students in the Seneca Valley School District or paying for a seeing eye dog and associated training for a blind individual. The latter can cost upwards of \$40,000, Roscoe said.

Over the four decades of the club's existence, they've donated more than \$250,000 to such causes. A normal year, Roscoe said, sees the club raising and donating around \$12,000.

That had the potential to change in 2020 when, faced with the COVID-19 pandemic, the pancake breakfast and other fundraisers were canceled. Club members got creative and, using art created by members' family and friends, sold Christmas cards in the community.

That helped raise about half of their goal, Roscoe said, and the club was able to donate to their normal causes as well as the Rotary Amphitheater renovation project.

And, with restrictions easing and events returning, the club's 33 members are anxious to get back into the swing of things with the 2021 edition of the pancake breakfast. "It's wonderful to be a part of that and raise a little bit of money," he said.

Their valiant efforts, however, are no walk in the park. 🏠





# MAKERSPACE TO OPEN DOORS FINALLY

The waiting is the hardest part – just ask the staff at the Cranberry Public Library.

As the 2019 Cranberry Township Community Chest Project of the Year, renovations within the Library were moving right along, and the crown jewel Makerspace filled with bright new tools and machines.

The doors were almost ready to open in April 2020 but were slammed shut by the COVID-19 pandemic. They've remained closed, as close-contact, hands-on creation was frowned upon during the age of social distancing.

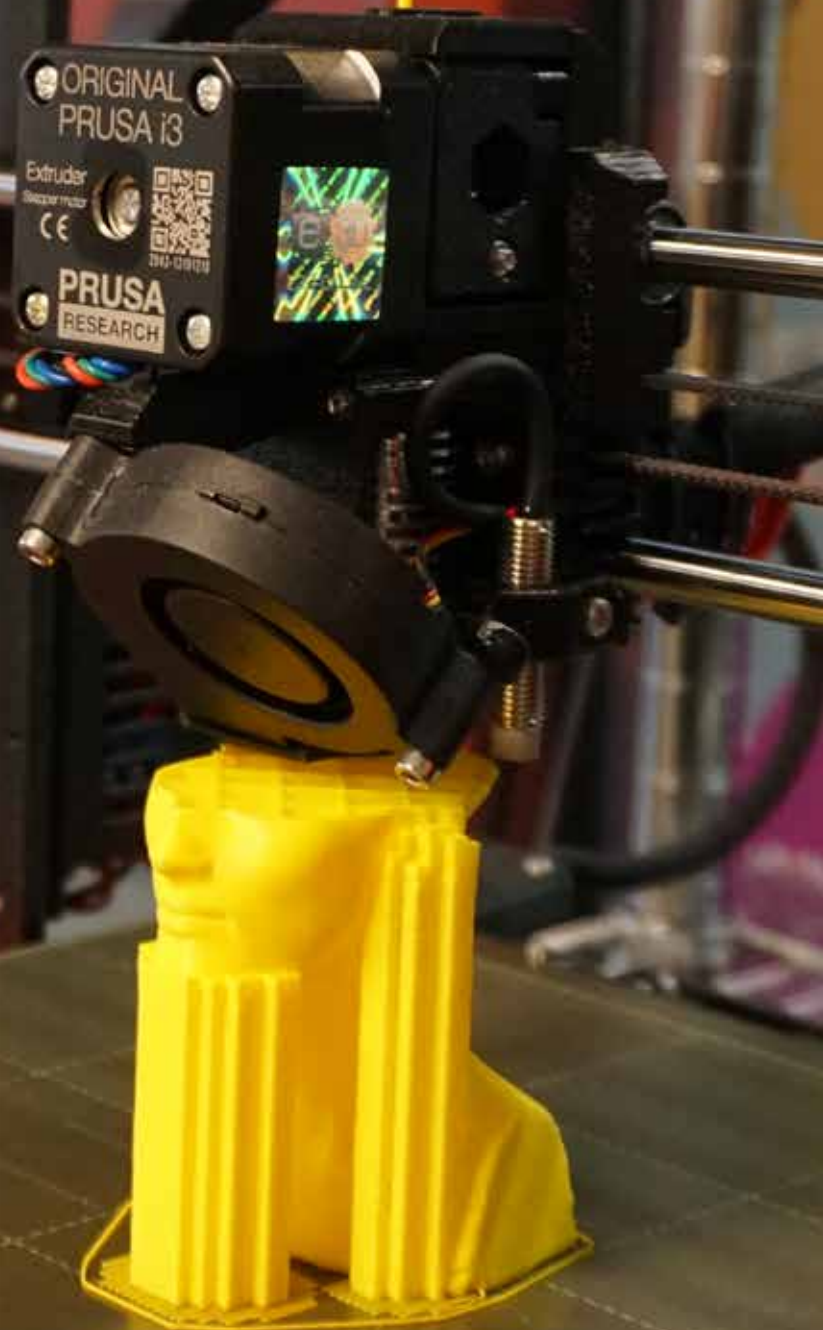
Early this fall, the Makerspace will finally open to eager creators. While a tentative date has not yet been set, the first offerings will be on a reservation-only basis. Excitedly, the Makerspace will be prepped to engage guests as it is staffed with a full-time staff member who is well-versed in all of the technology and crafts that 'make' this Makerspace special.

And there's quite a bit to learn. In fact, the pandemic's silver lining was the additional time used to master the equipment. The Makerspace features a Cricut Maker, sewing and embroidery machines, soldering stations, a laser engraver, and several 3D printers. That's in addition to the everyday supplies one needs to make a work of art.

Named "The Forge" in honor of the building's history, the Makerspace will offer a safe, creative space for all ages to learn, create, explore and come together with other makers.

As the opening is almost here, the library is slowly returning to offering normal services and programs and is putting other upgrades to accessibility and technology to good use.

Visit [CranberryLibrary.org](https://CranberryLibrary.org) for grand opening details. 🏠







## POOCH-FRIENDLY AREAS EXPAND

Every dog has its day, and those days are full of exercise and sunshine thanks to expanded canine access in the Township.

A pilot program allows pooches to walk – with their owners and on leashes – around the NexTier Loop, a paved trail that winds through North Boundary Park. It is adjacent to the Disc Golf Course and Nature Trail areas, where dogs have been permitted since 2019.

Dogs must be always leashed and are not permitted on sports fields, at the Waterpark or at the Crocodile Cove Playground.

To help owners navigate the new rules, dog stations have been erected at various stops along the loop, featuring pet waste

receptacles and signs outlining protocols.

A pack walk was held to kick off the program earlier this year, with dozens taking part.

The pilot program will run through 2021, with Township officials evaluating its success and determining if it will become a permanent feature. According to Pete Geis, Parks and Recreation Director, the program has been successful thus far, with pet owners taking serious responsibility to keep the trail clean.

“People are following the rules and taking care of the trails and parks, and really seem to be enjoying this new access,” he said. “We will continue to work with the Cranberry K9 Committee to make our pets feel as welcomed in the Township as any

resident or visitor.”

This newest area to allow dogs joins the Rotary Dog Park in Community Park, as well as the Brush Creek Trail Extension.

For a barking good time, please visit [CranberryTownship.org/DogPark](https://CranberryTownship.org/DogPark). 🐕





A full-page background image of a golf course. In the foreground on the left, a red flag is attached to a white pole. In the middle ground, a person wearing a white shirt and light-colored pants is using a blue hose to spray water onto a green. The background shows a line of trees under a clear blue sky.

# PRISTINE GREENS

## CRANBERRY HIGHLANDS GETS DAILY TLC

The average golfer takes 500 steps on the greens at Cranberry Highlands Golf Course per round.

While that isn't setting any FitBit records, multiply that by 35,000 rounds of golf – the near record number reached in 2020 – and those steps have made an impact.

That's where the course's grounds crew comes in, and it's more than just a few mowers and a sprinkler.

In fact, maintenance of the course is a nearly around-the-clock job for a full staff with the best tools in the business and years of scientific knowledge at their disposal. And while elements of the greens may only be two dimes in height, they sit atop a network of thriving roots that have been painstakingly cared for.

Your backyard, it isn't.

In addition to the lush greenery, the maintenance crews also care for 70 tee areas, 90 sand bunkers and water hazards, and miles of cart paths. And each blade of green is unlike the next, as the course is covered in 14 varieties of grass.

According to Dave Barber, Course Superintendent since its inception, the challenge doesn't necessarily come from the course itself, as each element was carefully chosen during construction to best fit the needs.

Instead, its challenges like wear, tear and weather that make tending to the course a full-time job for more than a dozen staff members. They hit the course bright and early each day re-setting the course. They mow, weed and perform other routine maintenance throughout the day.

But they also must check on the health of the course. That includes checking the soil makeup and doing preventative care to keep it at peak performance. The same goes for the maintenance of equipment, without which the job of keeping the course becomes impossible.

And just because there is snow on the ground doesn't mean the work stops. Barber and the team monitor the course throughout the year to check on any problem areas and prep for the spring.

It's all in a day's work in keeping Cranberry Highlands on course as one of the best facilities in the region. 🏡





## GIFT OF HOPE GOLF CLASSIC IS AUGUST 5

The 9th Annual Gift of Hope Golf Classic hosted by the Seneca Valley Foundation will be held at Cranberry Highlands Golf Course on Thursday, August 5.

The Seneca Valley Foundation is a 501(c)(3) non-profit organization dedicated to providing the gift of hope and promise of excellence to the Seneca Valley School District and has donated thousands of dollars toward elementary and secondary classroom enhancements, capital improvement projects and STEM activities, just to name a few.

Since the COVID-19 pandemic struck last spring, the SVF quickly pivoted its priorities to support the District's efforts in mitigating the spread of the coronavirus; providing relief to struggling families; and giving back to local community organizations and businesses that have supported our mission over the years.

The organization funded things like outdoor learning spaces, extras for the senior classes of 2020 and 2021, and delinquent cafeteria balances.

All proceeds from this year's golf outing

will allow the group to continue, and increase, efforts for the benefit of all Seneca Valley students and staff.

Information about sponsorship opportunities and registration can be found on our website at [svsd.net/GolfClassic](https://svsd.net/GolfClassic).

Payments for foursomes, individual golfers, and bundle cards can be made online by visiting [seneca-valley-foundation.square.site/s/shop](https://seneca-valley-foundation.square.site/s/shop).

Help the SVF make this event a swinging success! 🏡







# IT'S HAPPENING

## PUBLIC MEETINGS

### Cranberry Township Board of Supervisors

July 29, August 5, August 26,  
September 2, September 30  
6:30 PM, Council Chambers

### Planning Advisory Commission

July 6, July 26, August 2, August 30,  
September 7, September 27  
6:00 PM, Council Chambers

### Environmental Advisory Committee

July 14, August 11, September 8  
Details on website

### Zoning Hearing Board

As needed

More information: [CranberryTownship.org](http://CranberryTownship.org)



**FARMERS' MARKET EVERY FRIDAY  
AT THE MUNICIPAL CENTER  
3:00 - 7:00 PM**

**FREE Summer Concerts**

**CONCERTS IN THE PARK**  
Rotary Amphitheater  
Community Park, Rt. 19  
7:00 PM

Bella Tones  
Thursday, June 17  
The Wild Geese  
Thursday, June 24  
The Dallas Marks Band  
Thursday, July 22  
The PolkaMeisters  
Thursday, July 29

**GAZEBO CONCERTS**  
Municipal Center Front Lawn  
12 Noon

Mikey Dee  
Friday, June 11  
Elizabeth Danko  
Friday, July 16

**HELLO Summer**

Join us at the Waterpark!

- \* Friday Noodle Nights: 6-8 PM
- \* Totally Tubular Tuesdays: 9-11 PM

Admission: \$3; Members Free

- \* Military Appreciation Days

**Cranberry Township WATERPARK**  
[Cranberry4FUN.com/Waterpark](http://Cranberry4FUN.com/Waterpark)

**MAKER FAIRE**

Cranberry Public Library  
*inform, inspire, enrich...*

**Saturday, August 14  
9 AM - 3 PM**

More information:  
[CranberryLibrary.org](http://CranberryLibrary.org)

**Fire & FOOD TRUCKS**

**THURSDAY, JULY 15**  
- Park Station • 4-8pm

**WEDNESDAY, AUG. 4**  
- Haine Station • 5-8pm

Follow us on Facebook for additional details

**SAVE the DATES**

Meet the Firefighters  
Have Dinner & Dessert  
Station Tours  
Kids Fire Safety Activities  
Trucks on Display





# Community Comeback

## AFTER HIATUS, COMMUNITY DAYS RETURNS

**A**bseence makes the heart grow fonder. That outlook undoubtedly applies to Community Days, the Township's annual celebration of all things Cranberry.

After a hiatus in 2020, Cranberry Township Community Chest's Community Days, sponsored by UPMC Passavant, will return July 8-10, bringing safe, family-friendly fun to Cranberry's residents.

Staples of the weekend will return, including the Cruisin' Cranberry Car Show, Community Chase 5K, Lion's Pancake Breakfast, Rotary BINGO, and the fan-favorite Saturday night fireworks display.

Attendees can also browse socially distanced vendors and food trucks,

enjoy carnival rides, and have fun in the newly added Kid Zone, courtesy of Moe's Southwest.

The free event also features live music and other performances, which will be staged at the recently renovated Rotary Amphitheater. Free parking is exclusively provided by T-Mobile.

That's not to mention the dozens of vendors, featuring everything from artists, craftsmen, food trucks, non-profit organizations, and other businesses.

Also returning in 2021 is Martinis & Monet, a collaboration between CTCC and the Cranberry Artists Network. Serving as the kick-off to Community Days weekend, the event is scheduled for 7-9 p.m. Wednesday, July 7 at the Municipal Center.

Using both the interior and exterior of the building, guests can take their pick of dinner from various food trucks and enjoy live entertainment along with mingling with the local artists. It is preceded by the Four Pillars Reception, which brings

businesses, nonprofits, faith communities, and civic groups together to celebrate charitable accomplishments.



While celebration is the focus of the weekend, staff are also working to make sure the events are safe for everyone. That includes following any CDC guidelines and recommendations that may be in place at the time and providing more open areas to allow for social distancing.

Visit [YourCTCC.org/CommunityDays](https://YourCTCC.org/CommunityDays) for a schedule of events, and make plans to attend! 🚗







Photos by Bill Paterson

# *Congrats* CLASS OF 2021

from Cranberry Township

*Cranberry Highlands*



*where love stories begin...*

Our exquisite greens will provide a picturesque yet tranquil backdrop for your special occasion. Whether you are seeking a locale for a stylish reception, intimate rehearsal dinner, or bridal shower, we offer unparalleled service and flexible accommodations for up to 150 guests.

Photo by Captivating Imagery



724-776-7372  
CranberryHighlands.com/Banquets



**CRANBERRY TOWNSHIP**  
2525 ROCHESTER ROAD, SUITE 400  
CRANBERRY TOWNSHIP, PA 16066-6499  
724-776-4806

PRSRT STD  
US POSTAGE  
**PAID**  
PERMIT #25  
CRANBERRY TWP, PA

**POSTAL PATRON**  
**CRANBERRY TOWNSHIP, PA 16066**



*Coming to a neighborhood near you!*

